

HIGHWAY INFRASTRUCTURE & RECREATION COMMITTEE MEETING AGENDA

DAY & DATE: Thursday, May 3, 2018
TIME: 8:00 A.M.
PLACE: Wood County Highway Department, 555 17th Ave North,
Wisconsin Rapids, WI 54495

1. Call meeting to order.
2. Declaration of Quorum.
3. Public comments.
4. Approve minutes of the previous Highway Infrastructure and Recreation Committee meetings and the minutes of the January 9, 2018 Wood County Wildlife Area Advisory Committee meeting.
5. Correspondence.

PARKS & FORESTRY:

6. Parks Construction Supervisor report.
 - a. Current projects update.
 - b. Employee matters.
7. Office Supervisor report.
 - a. Snowmobile/ATV Reports
 - b. Office Update
 - c. Fundraising / Class A Raffle License
8. Park and Forestry Director report.
 - a. 2018 Parks, Recreation, and Open Spaces Plan update
 - b. 2018 equipment purchasing update
 - c. Powers Bluff Project update
 - d. Special Use Permits
9. Forest Administrator report.
 - a. Timber Sale Update.
 - b. Wood County Wildlife Area Advisory Committee – new member recommendation for appointment.
 - c. Timber Sale Contract Extensions: #719, #724, #731, #740, #741, #744, #745
10. Approve payment of bills.
11. Revenue report.

HIGHWAY:

12. Quotes for Crushing at Smith Pit
13. Bids for Chemical Warm Mix and Compaction Aid
14. Bids for CTH E Bridge
15. Personnel
16. Fuel System
17. Current projects update.
18. Approve payment of bills.
19. Accounting Supervisor's Report.
20. Future Agenda Items
21. Next meeting date: June 7, 2018 at the Wood County Highway Department,
555 17th Ave. North, Wisconsin Rapids, WI 54495 at 8:00 am.
22. Motion to adjourn.

**MINUTES OF THE
HIGHWAY, INFRASTRUCTURE & RECREATION COMMITTEE**

DAY & DATE: Thursday, April 5, 2018 at 8:00 AM
PLACE: Wood County Highway Department, 555 17th Ave North,
Wisconsin Rapids, WI 54495
MEETING TIME: 8:00 A.M.
ADJOURNMENT TIME: 10:35 A.M.
MEMBERS PRESENT: Chairman Al Breu, Supervisor Marion Hokamp, Supervisor
David LaFontaine, Supervisor William Winch, Supervisor
Joseph Zurfluh
EXCUSED: None.
OTHERS PRESENT: Bill Clendenning, Wood County Board; Lance Pliml,
Wood County Board; Dennis Polach, Wood County Board;
Fritz Schubert, Forest Administrator; Sandra Green, Parks
and Forestry Office Manager; Douglas Passineau, Highway
Commissioner; Caitlin Carmody, Highway Accounting
Technician; Jack Yates, HG Meigs LLC; Jeff Schuh, FAS;
James Johnson, Midstates Equipment & Supply, Inc.

1. Call meeting to order. Meeting called to order by Supervisor Breu at 8:04 am.
2. Public comments.

Supervisor Winch mentioned that there is a good article in the County Magazine regarding county highway departments.

3. Approve minutes of the March 1, 2018 Highway, Infrastructure, and Recreation Committee meeting(s).

Motion to approve the minutes of the March 1, 2018 HIRC meeting by D. LaFontaine and seconded by M. Hokamp. All in favor. Motion carried.

PARKS:

4. Parks Construction Supervisor report.
 - a. Current projects update.
 - b. Employee matters.

The Committee discussed the goose control methods proposed at White Beach. They also discussed what the "LTE – II" title means. According to Supervisor Pliml, the LTE – II designation is one that indicates what types of equipment the employee is able to utilize. The Parks Department no longer utilizes the "LTE I" title.

Motion to approve the Parks Construction Supervisor report by D. LaFontaine and seconded by J. Zurfluh. All in favor. Motion Carried.

5. Office Supervisor report.
 - a. Snowmobile/ATV Reports.
 - b. Office Update.
 - c. Approval of ATV and Snowmobile Funding Resolutions for 2018-2019

Motion to approve the ATV and Snowmobile Funding Resolutions for 2018-2019 by W. Winch and seconded by M. Hokamp. All in favor. Motion carried.

Motion to approve the Office Supervisor report by D. LaFontaine and seconded by J. Zurfluh. All in favor. Motion carried.

6. Park and Forestry Director report.

- a. Special Use Permits. Green provided the committee with the Special Use Permits to be approved.

1. David Tiffany
North Park Disc Golf Course
June 3, 2018
Returning SUP.
2. Pink Pumpkin 5k
South Park Stone Shelter
October 19-20, 2018
Returning SUP
3. David Johnson for Kiwanis Foundation
Red Sands Beach
June 2, 2018
Returning SUP

Motion to approve the Special Use Permits by J. Zurfluh and seconded by D. LaFontaine. All in favor. Motion carried.

Motion to approve the Parks and Forestry Director report by D. LaFontaine and seconded by J. Zurfluh. All in favor. Motion carried.

FORESTRY:

7. Forest Administrator report.

- a. Timber Sale Update

Schubert provided the committee with a new report format for the Timber Sale Updates. The new format was explained and discussed. Just a couple more revisions were suggested which Schubert and Green will take care of.

- b. Enbridge Pipeline: Temporary Access, Working Rights and Occupation Agreement

Schubert explained that on occasion, Enbridge Pipeline will request access to do work on their right-of-way for pipeline maintenance. It happens every year usually. It is a standard agreement and was reviewed by the Corporation Counsel office.

Motion to approve the Enbridge Pipeline Temporary Access, Working Rights and Occupation Agreement by J. Zurfluh and seconded by W. Winch. All in favor. Motion carried.

Motion to approve the Forest Administrator's report by M. Hokamp and seconded by D. LaFontaine. All in favor. Motion carried.

8. Correspondence.

Schubert shared that George Bartels will be stepping down from the Wildlife Advisory Committee. He has been a member of the committee since 1997 and has been serving as

chairman for quite a few years. They now have two vacancies on the committee which they are looking to fill. There is one known applicant whose application Schubert will be forwarding to County Board Chair for consideration/appointment along with any others that might be submitted soon. Others are encouraged to apply. Meetings are held quarterly.

Green brought forward a draft resolution on behalf of Chad Schooley, Parks and Forestry Director, that he received from Marla Cummings in Finance. The resolution is to supersede all resolutions to retain excess revenues received by departments. Supervisor Pliml stated that this resolution is currently being reviewed by the Department Heads. If it is to be reviewed by the Board, it would first go through subcommittees before being discussed on the Board floor. Green expressed concerns that Schooley and Schubert have regarding the retention of excess forestry revenues required by State Statute.

9. Approve payment of bills. **Motion to approve the payment of bills by D. LaFontaine and seconded by J. Zurfluh. All in favor. Motion carried.**
10. Revenue report. **Motion to approve the revenue report by M. Hokamp and seconded by W. Winch. All in favor. Motion carried.**

Committee took a break at 8:55 AM and resumed at 9:00 AM.

HIGHWAY:

11. Milling and Pulverizing Quotes **Motion to approve the quotes deemed most advantageous to the county by D. LaFontaine and seconded by J. Zurfluh. All in favor. Motion carried.**
12. Bituminous Materials Quotes

Passineau explained that for PG 58-34 and PG 58-28, which are two types of oil, the standard practice has been to split the quote between the two companies with the low bidder receiving 60% of the purchases and the high bidder matching the low quote price and receiving 40% of the purchases. The reason for this is to ensure fair pricing and that the oil companies will be able to provide the department with enough product throughout the year. This year, one of the companies submitting quotes (Flint Hills Resources) listed their prices incorrectly on their submission sheet but had it listed correctly elsewhere in their documentation. They were also the low bidder. Passineau stated that his intention was to award the 40% allocation to Flint Hills and to award the 60% to HG Meigs at the low quote price.

Passineau stated the rest of the products are chosen based on quality of material and low price.

Motion to approve the quotes deemed most advantageous to the county considering the quality of product by D. LaFontaine and seconded by M. Hokamp. All in favor. Motion carried.

13. Cold-in-Place Recycling Bid

Carmody explained that there was an addendum sent to the plan holders on Monday, April 2 that changed the amount of cold-in-place recycling listed on the plan sheet from 4 inches to 3 inches. Plan holders were instructed to submit the corrected bid by 10:00 AM on Wednesday, April 4. One plan holder, Midstates Reclamation, had mailed a bid based on the plan prior to the addendum, but their revised bid was not received until 11:00 AM on Wednesday, April 4. Therefore, the bid results reflect their original bid and not the revised one.

Motion to approve the bid deemed most advantageous to the county by D. LaFontaine and seconded by J. Zurfluh. All in favor. Motion carried.

14. Brine Making and Blending Quotes

Passineau explained that brine making operations will only continue to increase in the coming years. His department did the math and found that by building and paying for the brine making facility and equipment out of departmental funds, the pay back would be approximately 4 years on the equipment and 12 years on the entire building and equipment. Some counties who have brine making facilities have reported a 60% savings on their salt.

The difference in the two quotes was that Varitech built their quote based on a 160 gallon per minute pump and Monroe Truck built theirs on a 300 gallon per minute system. Varitech came in significantly lower with their quote, and with an upgrade in the pump to the 300 gallon per minute type, they would still be the low quote.

Motion to approve the quote deemed most advantageous to the county by D. LaFontaine and seconded by J. Zurfluh. All in favor. Motion carried.

15. Appraisal of the Pittsville Shop

Passineau stated he spoke with the company who did the original appraisal in 2013 regarding updating the appraisal. They instructed to add 10% to the appraisal. Passineau stated it is his intention to keep the salt shed building and put the Parker building and shop up for sale. The Committee approved of this plan and instructed Passineau to move forward with it.

16. Flooring at the Wisconsin Rapids Shop

Motion to replace the carpeting in the front office of the Wisconsin Rapids Shop by D. LaFontaine and seconded by J. Zurfluh. All in favor. Motion carried.

17. Shop Overhead

In a continuation of the discussion from the prior meeting, Passineau stated his recommendation is to charge 50% shop overhead to Wood County departments and 100% to municipalities.

Motion to charge 50% shop overhead to Wood County departments and 100% shop overhead to municipalities on all shop labor invoices effective January 1, 2019 by W. Winch and seconded by J. Zurfluh. All in favor. Motion carried.

18. Frac Sand update.

19. Current projects update.

20. Approve payment of bills.

Motion to approve payment of Wood County Highway bills by D. LaFontaine and seconded by M. Hokamp. All in favor. Motion carried.

21. Accounting Supervisor's Report.

Motion to approve the Accounting Supervisor's report by J. Zurfluh and seconded by W. Winch. All in favor. Motion carried.

22. Correspondence.

The committee discussed the procedures for the upcoming Highway Commissioner interviews.

23. Next meeting date: May 3, 2018 at Wood County Highway Department, 555 17th Ave. North, Wisconsin Rapids, WI 54495

24. **Motion to adjourn by D. LaFontaine and seconded by W. Winch at 10:35 AM. All in favor. Motion carried.**

Signed by, Secretary Marion Hokamp

Marion Hokamp

Minutes taken by Caitlin Carmody, Highway Accounting Technician

**MINUTES OF THE
HIGHWAY, INFRASTRUCTURE & RECREATION COMMITTEE**

DAY & DATE: Friday, April 13, 2018
PLACE: Conference Room 114, Wood County Courthouse,
400 Market Street, Wisconsin Rapids, WI 54495
MEETING TIME: 8:00 A.M.
ADJOURNMENT TIME: 8:46 A.M.
MEMBERS PRESENT: Chairman Al Breu, Supervisor Marion Hokamp, Supervisor
David LaFontaine, Supervisor William Winch, Supervisor
Joseph Zurfluh
EXCUSED: None
OTHERS PRESENT: HR Generalist Angel Butler-Meddaugh, Highway
Commissioner Doug Passineau

1. Call meeting to order. Meeting called to order by Supervisor Breu at 8:01 a.m.
2. Public comments. None.
3. The committee may go in to closed session pursuant to §19.85 (1)(c) Wis. Stats., to review offer of employment for the Highway Commissioner candidate and to discuss the qualifications of the candidates

Motion to go into closed session by Supervisor LaFontaine and seconded by Supervisor Hokamp at 8:01 AM.

Roll call vote: Breu: yes; Hokamp: yes; LaFontaine: yes; Winch: yes; Zurfluh: yes; Motion carried.

4. Return to open session.

Motion to return to open session by Supervisor LaFontaine and seconded by Supervisor Zurfluh at 8:45 AM. All in favor. Motion carried.

The committee approved the offer to candidate regarding Highway Commissioner in closed session.

5. Motion to adjourn.

Motion to adjourn by Supervisor LaFontaine and seconded by Supervisor Zurfluh at 8:45 A.M. All in favor. Motion carried.

Submitted and signed electronically,

Marion Hokamp

Marion Hokamp
Secretary

Minutes taken by Angel Butler-Meddaugh, HR Generalist

6

**MINUTES OF THE
HIGHWAY, INFRASTRUCTURE & RECREATION COMMITTEE**

DAY & DATE: Monday, April 23, 2018
PLACE: Wood County Highway Department, 555 17th Ave North,
Wisconsin Rapids, WI 54495
MEETING TIME: 5:00 P.M.
ADJOURNMENT TIME: 5:10 P.M.

MEMBERS PRESENT: Present were Supervisors Marion Hokamp, Dennis Polach,
William Winch, Lance Pliml and Adam Fischer
EXCUSED: None.
OTHERS PRESENT: Present were Supervisors Clendenning and Machon; Sandra
Green, Parks and Forestry Office Manager; Douglas
Passineau, Highway Commissioner; Chad Schooley, Parks
and Forestry Director; Peter Kastenholz, Corporation
Counsel;

1. Call meeting to order. Meeting was called to order at 5:00 pm by Supervisor Winch.
2. Election of chairperson, vice-chairperson, and secretary.
Supervisor Pliml nominated Supervisor Fischer and Supervisor Winch nominated
Supervisor Polach for Chairperson. Supervisor Fischer acquired the most votes and
accepted the nomination.

At this time, Supervisor Fischer assumed his role as Chairperson of the HIRC
Committee.

Chairperson Fischer asked for nominations for Vice Chairperson. Supervisor Hokamp
nominated Supervisor Winch. No other nominations. Supervisor Winch accepted the
nomination.

**Motion by Supervisor Pliml and second by Supervisor Hokamp to accept the
nomination and assignment of Supervisor Winch as the Vice Chairperson. All in
favor. Motion Carried.**

Chairperson Fischer then asked for nominations for Secretary. Supervisor Winch
nominated Supervisor Hokamp. No other nominations. Supervisor Hokamp accepted the
nomination.

**Motion to accept the nominations and assignments as stated above by Supervisor
Pliml, second by Supervisor Hokamp. All in favor. Motion carried.**

3. Public comments. Supervisor Hokamp requested to let it be known that she was very
disappointed in the make-up of this new committee. She has heard that there are
members assigned to this committee that are looking to take away the money they have
worked hard to obtain for the Highway Department. She wants it to be known that she
hopes these individuals do not try to undo the progress that has been made so far.

4. Set date and time for next meeting. It was the consensus they would continue on the first Thursday of each month at 8:00 am at the Wood County Highway Department. No objections. Therefore, the next meeting date is May 3, 2018 at Wood County Highway Department, 555 17th Ave. North, Wisconsin Rapids, WI 54495.
5. Adjourn. Motion to adjourn at 5:10 pm by Adam Fischer and second by Marion Hokamp. All in favor. Motion carried.

Signed by, Secretary Marion Hokamp

Marion Hokamp

Minutes taken by Sandra Green, Parks & Forestry Office Supervisor

**MINUTES OF THE
HIGHWAY, INFRASTRUCTURE & RECREATION COMMITTEE
SUBCOMMITTEE TO INTERVIEW HIGHWAY COMMISSIONER APPLICANTS**

DAY & DATE: Monday, April 9, 2018
PLACE: Conference Room 115, Wood County Courthouse,
400 Market Street, Wisconsin Rapids, WI 54495
MEETING TIME: 8:00 A.M.
ADJOURNMENT TIME: 12:15 P.M.
MEMBERS PRESENT: Chairman Al Breu, Supervisor David LaFontaine

EXCUSED: Supervisor Marion Hokamp, Supervisor William Winch,
Supervisor Joseph Zurfluh
OTHERS PRESENT: HR Generalist Angel Butler-Meddaugh, Highway
Commissioner Doug Passineau, County Board Chairman
Lance Pliml and Supervisor Dennis Polach

1. Call meeting to order. Meeting called to order by Supervisor Breu at 8:04 a.m.
2. Public comments. None.
3. The subcommittee may go in to closed session pursuant to §19.85 (1)(c) Wis. Stats., to interview candidate(s) for the Highway Commissioner position and to discuss the qualifications of the candidates.

Motion to go into closed session by Supervisor Breu and seconded by Supervisor LaFontaine at 8:04 a.m. All in favor. Motion carried.

4. Return to open session.

Motion to return to open session by Supervisor Breu and seconded by Supervisor LaFontaine at 12:15 p.m. All in favor. Motion carried.

5. Motion to adjourn.

Motion to adjourn by Supervisor Breu and seconded by Supervisor LaFontaine at 12:16 p.m. All in favor. Motion carried.

Submitted and signed electronically,

Marion Hokamp

Marion Hokamp
Secretary

Minutes taken by Angel Butler-Meddaugh, HR Generalist

**MINUTES OF THE
HIGHWAY, INFRASTRUCTURE & RECREATION COMMITTEE
SUBCOMMITTEE TO INTERVIEW HIGHWAY COMMISSIONER APPLICANTS**

DAY & DATE: Wednesday, April 11, 2018
PLACE: Conference Room 115, Wood County Courthouse,
400 Market Street, Wisconsin Rapids, WI 54495
MEETING TIME: 8:00 A.M.
ADJOURNMENT TIME: 12:40 P.M.
MEMBERS PRESENT: (for all or part of the meeting) Chairman Al Breu,
Supervisor David LaFontaine, Supervisor Marion Hokamp,
Supervisor William Winch

EXCUSED: Supervisor Joseph Zurfluh
OTHERS PRESENT: HR Generalist Angel Butler-Meddaugh, Highway
Commissioner Doug Passineau, County Board Chairman
Lance Pliml (left at 9:17 a.m.) and Supervisor Dennis
Polach, Deputy County Clerk Trent Miner (at 12:25 p.m)

1. Call meeting to order. Meeting called to order by Supervisor Breu at 8:02 a.m.
2. Public comments. None.
3. The subcommittee may go in to closed session pursuant to §19.85 (1)(c) Wis. Stats., to interview candidate(s) for the Highway Commissioner position and to discuss the qualifications of the candidates.

Motion to go into closed session by Supervisor LaFontaine and seconded by Supervisor Hokamp at 8:03 a.m. All in favor. Motion carried.

4. Return to open session.

Motion to return to open session by Supervisor LaFontaine and seconded by Supervisor Breu at 12:15 p.m. All in favor. Motion carried.

5. Motion to adjourn.

Motion to adjourn by Supervisor LaFontaine and seconded by Supervisor Breu at 12:40 p.m. All in favor. Motion carried.

Submitted and signed electronically,

Marion Hokamp

Marion Hokamp
Secretary

Minutes taken by Angel Butler-Meddaugh, HR Generalist

WOOD COUNTY STATE WILDLIFE AREA ADVISORY COMMITTEE
SANDHILL WILDLIFE AREA
OUTDOOR SKILLS EDUCATION CENTER
JANUARY 9, 2018 AT 5:30 PM

- THE MEETING WAS CALLED TO ORDER AT 5:35 PM BY CHAIRMAN GEORGE BARTELLS
- THOSE ATTENDING WERE GEORGE BARTELLS, SCOTT MCAULEY, SCOTT ARNESON, CURT PLUKE, LEO KEDROWSKI, DENNIS POLACH, FRITZ SCHUBERT, JOHN KUBISIAK
- NEIL PAISLEY RETIRED, AMY WITH GROUSE STUDY IS IN MADISON SO AGENDA WILL CHANGE TONIGHT
- NO CITIZEN PARTICIPATION
- MOTION BY CURT PLUKE, 2ND BY SCOTT MCAULEY TO APPROVE THE MINUTES OF 10-17-17 MOTION CARRIED
- NO NEW MEMBERS
- NO STAN PLISS REPORT
- SANDHILL WILDLIFE AREA OPEN HOUSE WILL BE THE LAST SATURDAY OF APRIL
- WE HOPE THAT THE REPLACEMENTS FOR NEIL PAISLEY, RICK GREEN AND WAYNE ARRIVE SOON.
- A BIG THANK YOU TO NEIL PAISLEY FOR 37 YEARS WITH THE WDNR
- MOTION TO ADJOURN AT 6:10 PM BY CURT/SCOTT, MC
- NEXT MEETING APRIL 10, 2018 AT THE SANDHILL WILDLIFE AREA, OUTDOOR SKILLS CENTER AT 1715 COUNTY HIGHWAY X, BABCOCK, WI 54466

PARKS CONSTRUCTION SUPERVISOR REPORT

May 3, 2018

By D. Quinnell

CURRENT PROJECTS

- The South Park Ranger Cabin remodel continues with soffit and fascia, as we get time.
- The South Park White Beach retaining wall replacement project has begun again and will be complete before Memorial Day.
- New addition on South Park shop will begin as soon as the power is re-routed. The plan is to be completed before Memorial Day.
- We plan on finishing the electrical updates to South Park campground third loop before the end of May. The 3rd loop will remain closed during this timeframe.

MAINTENANCE OPERATIONS

- As of Friday, April 27th, all Parks are open for the 2018 season.

EMPLOYEE MATTERS

- Camp rangers are on staff.
- The LTE's will be on staff before the end of May.
- We are planning an employee meeting for the 10th of May at which time the employees on staff will do their annual safety training.

OTHER

- Solarus is testing a goose control system on the White Beach. The system works with cameras that identify geese, which then activates a sprinkler system in that area. This system should be installed before Memorial Day.

WOOD COUNTY PARKS & FORESTRY
OFFICE SUPERVISOR REPORT

May 3, 2018

By: Sandra Green

SNOWMOBILE:

- Finalized all snowmobile club equipment information in the SNARS system. Annie Loechler from the State DNR worked with me on this project.
- Received and verified all snowmobile non-grooming and grooming entries in the SNARS system.
- Worked with a few of the clubs who needed log-on information or who had questions regarding how to enter their information into the SNARS program.
- Worked on the landowner/easement information for the Vesper Snow Drifters by using the Wood County GIS data and Tax Payer information. I plan on getting more details on each club's easement information and will work on this throughout the year.
- Attended the last AWSC snowmobile meeting in Sherry.
- The deadline for the 2nd half of snowmobile maintenance is due May 30 so the clubs are working on their entries. Due to the ground still being frozen and this late snowfall, the clubs are having issues pulling their signs off the trails so this may delay the deadline a bit. I will work with the state if this happens. I have started to receive 2nd half entries from clubs already.
- The deadline for having all Wood County GPS'd snowmobile trails in was April 16th. I received these files from Justin in Planning & Zoning and forwarded them to Annie Loechler, State DNR.
- The deadline for having Snowmobile and ATV maintenance grant applications was also April 16th. I had these resolutions approved at the April HIRC meeting and the County Board approved them at the April 17th meeting.

ATV:

- I was contacted by Planning & Zoning for information on ATV routes in Wood County. I compiled all of the information that I have and forwarded that to Jason G. I also asked him to keep me apprised of new developments and/or scheduled meetings that pertain to creating ATV routes/trails as this moves forward.

OFFICE:

- Provided Wellness materials to employees in the field and office.
- I have begun putting together a survey for our last vendor event. This survey will go out to the vendors we had over the course of two days. I would like to know what they thought of the event, how things flowed, what we could do differently for next time and what they thought overall if they would return for another event. We are considering having another one in November sometime prior to the holidays. All monies will go toward the Powers Bluff Development project for the snowmaking equipment and lighting.
- Updated numbers for the 2017 Comprehensive Annual Financial Report statistical section for Finance.
- We received a \$100 donation for the Powers Bluff Development project from Supervisor Clendenning. THANK YOU. He is challenging each of the other County Board members to do the same. We accept donations from 8am-4pm, M-F ☺
- Finalized the revisions for the 2018 summer brochure which were sent to the Buyer's Guide for production. Brochures are scheduled to be delivered on April 25th.
- With the help of Sue, we completed the start-up supplies for the summer LTE's, rangers and campground hosts.

- Hosted by the Sheriff's Department, I watched an Active Shooter Training video on April 9th as well as actual training for our department on April 10th at the River Block building.
- Attended the April 5th HIRC meeting representing Chad.
- Advertised the three job openings for summer LTE's (one at each park is needed) on our Facebook page. The deadline was extended to April 29th hoping to receive more candidates to interview.
- Finalized the updates to the Group Camping Policy for North and Dexter. Advertised this information on Facebook and our website.
- Worked with Chris Markworth to make various changes to our pages on the Wood County website.
- Worked with HR to set up POPE drug tests for returning summer LTE's and Campground Rangers.
- The forestry billings have really picked up this month so I have been sending out invoices each week.
- Put together a Power Point presentation on the Open Spaces Plan Survey for Chad.
- Assigned ID cards to all of our employees who use the Highway gas pumps.
- Attended the April 23rd HIRC meeting to elect officers as well as take the minutes of the meeting.
- Completed the IT Training KnowB4U – "Passwords" and "Ransomware".
- Worked with IT/Lisa Keller in getting all of our Facebook pages "Verified".
- Sent out News Release for "Opening Date for Campgrounds".
- Prepared Timber Sale Bid Opening packet for Forestry which is scheduled for 5/18/18.
- Advertised on Facebook the auctions Parks has running on Wisconsin surplus.com.
- Completed entering the information on Facebook for each campsite at North Park including dimensions, location, etc.
- Uploaded the newly updated park maps to Facebook.
- Announced on Facebook the 2018 Spring/Summer Photo Contest through Labor Day.
- Announced on Facebook the winners of our 2017-2018 Fall Photo Contest and awarded the prizes.

Grand Prize Winner

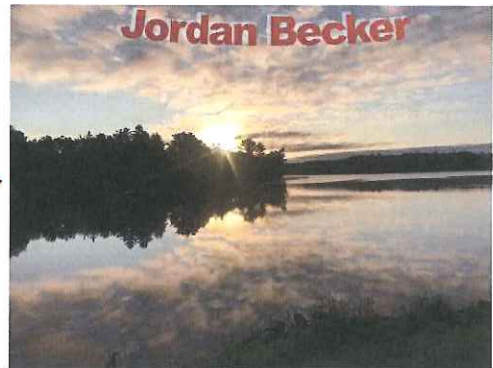


Joah Conville

1st Annual Photo Contest Winners
Fall/Winter Season
2017-2018



Second Place Winner



Jordan Becker



The Conduct of Raffles Under a Class A License

General Class A Guidelines: (563.93 The conduct of raffles under a Class A license.)

- An organization may conduct single container raffles, a calendar raffle, or plastic rubber duck race raffles.
- Some or all of the tickets must be sold on days other than the date of the drawing.
- Tickets must be preprinted with all required information. See Class A ticket requirements and sample below.
- Provide the purchaser with their portion of the ticket prior to the drawing.
- Renewals are to be filed each year, with \$25 and information regarding raffles held during the previous license year.
- A raffle ticket may not be resold.

Class A Ticket Requirements: (563.93(1m))

- All tickets and calendars must be identical in form and include:
 - The organization's raffle license number.
 - The name and address of the licensed organization.
 - The price of the ticket or calendar, including the discounted price; 1 ticket for \$5, 4 for \$15, or 8 for \$30.
 - A place for the purchaser to enter their name, address, and phone number.
 - The date, time, and location of the drawing, including address.
 - Consecutive numbering is required on all tickets or calendars. Ticket and stubs must have matching numbers.
 - Must list prizes with a fair market value of \$1,000 or more.

<p>Ticket Cost</p> <p>Ticket Cost: \$1.00 each or 6 for \$5.00</p>	<p>Name & Address of Licensed Organization Conducting Raffle</p> <p>Licensed Organization Address City, State, Zip</p>	<p>Consecutive Numbering</p> <p>0001</p>	<p>Stub for Purchaser's Name, Address & Phone</p> <p>0001</p>
<p>Grand Prize: \$1,000</p>		<p>NAME</p> <p>ADDRESS</p> <p>CITY/STATE</p> <p>PHONE</p>	
<p>Raffle Drawing: July, 1, 2015 7:00 PM at Location of Drawing</p>	<p>License No. R000999A-99999</p>		
<p>Date, Time & Location, with address where drawing will be held</p>	<p>List of Prizes with a Fair Market Value of \$1,000 or more</p>	<p>Raffle License Number</p>	

Calendar Raffles:

- Calendar raffles require approval from our office prior to printing as the requirements are much more specific than a standard Class A raffle ticket. The information may be found on our website below or by calling the number listed below.

Other Important Information:

- You may not require the purchaser to be present to win. You may not offer a secondary prize if the winner is present. The prize listed is the prize that is given to the winner.
- Raffle tickets are not tax deductible and the purchase price of a raffle ticket is not a donation.
- "Early Bird" drawings are not legal. A raffle ticket allows you entry into one single drawing.
- Progressive raffles are not legal.
- All drawings must be held in public. You cannot require an entry fee into an event for a purchaser to witness a drawing.
- Prizes with legal restrictions require a disclaimer regarding age and/or felony convictions. (563.93(2g)(a))
- A Class A raffle license is only valid for Class A raffles; if you wish to conduct Class B raffles you will need to file an Original Raffle license application requesting a Class B raffle license.
- Raffle license numbers are not given out over the phone for printing raffle tickets or for filing renewals. It is the responsibility of the organization to keep track of their raffle license.
- A raffle license is issued for the exclusive use of a qualified organization. All raffles conducted under their license are their responsibility.
- All profits raised are required to be used for the licensed organization's purpose in Wisconsin.
- An organization may not loan their license to an individual or business.

Duplicate Raffle License & Name Changes:

- If you lose your raffle license, you may request a duplicate license by completing the "Duplicate Raffle License" form found on our website and sending it in with the \$5 fee.
- To change the name of the designated member, file a renewal application and complete sections A and B. If you would like a copy of the license with the change, submit \$5.
- To file an organization name change, include the new name and other new information on the next renewal application. You will need to submit the name change documentation that was filed with the State of Wisconsin. There is no need to request a name change prior to renewal.

Records and reporting requirements have changed. Please see the "Recordkeeping and Reporting Requirements" informational sheet for specific information.

**STATE OF WISCONSIN
DEPARTMENT OF ADMINISTRATION
DIVISION OF GAMING
P.O. BOX 8979
MADISON, WI 53708-8979
(608) 270-2552
(800) 791-6973
(608) 270-2564 FAX**

www.doa.wi.gov/divisions/gaming/charitable-gaming

For complete information on the Statutes, please visit our website.

Parks and Forestry Director Report

By Chad Schooley, Parks and Forestry Director

May 3, 2018

HIRC meeting

- I will be giving the committee an update on our Parks, Recreation, and Open Spaces Plan at the meeting. We are planning on holding public open houses on May 16th at Powers Bluff, and on May 23rd at Nepco Lake Park. At these open houses, Adam D, County Planner, and I, will be giving a summary of the public survey recently completed. We will also accept further comments from the public to include in our plan update. I will be giving a presentation at the Town's Association meeting about this on 4/27.
- I will be bringing a summary of the CIP funds that the department was allotted in 2018.
- As was requested at the March HIRC meeting, I will give the committee an update on the Powers Bluff Development Project.
- Office staff attended Active shooter training on 4/9 and 4/10. This was put on by the Sheriff's Dept., and WR PD.
- I have been working with Shane W., LWCD, on an application to host an Americorp work group this summer. If approved, we would have a crew of 4-6 that would work on trail construction at Powers Bluff, for a period of 2 ½ weeks in August. We will find out in late May if we were selected.
- Attended 4/17 county board meeting.
- Staff has been working hard at getting parks ready for the Friday, April 27th opening. The late snowfall and colder temps have put us behind, but we will have the parks ready to go by the opener.

April: 7 shelter reservations

Special Use Permits None at this time.

POWERS BLUFF COUNTY PARK

TRAILS CONCEPT PLAN

APRIL 2018

Legend

- Planned Multi-Use Paths : 3.0 Miles
- Planned Mountain Bike Trails : 7.75 Miles
 - Beginner
 - Intermediate
 - Advanced
- Planned Bike Park Zones
Flow Trails, Skills Features, Pumptrack
- Race Event Support Zone
Parking, Camping, Staging
- Existing Hiking Trails

Prepared by:



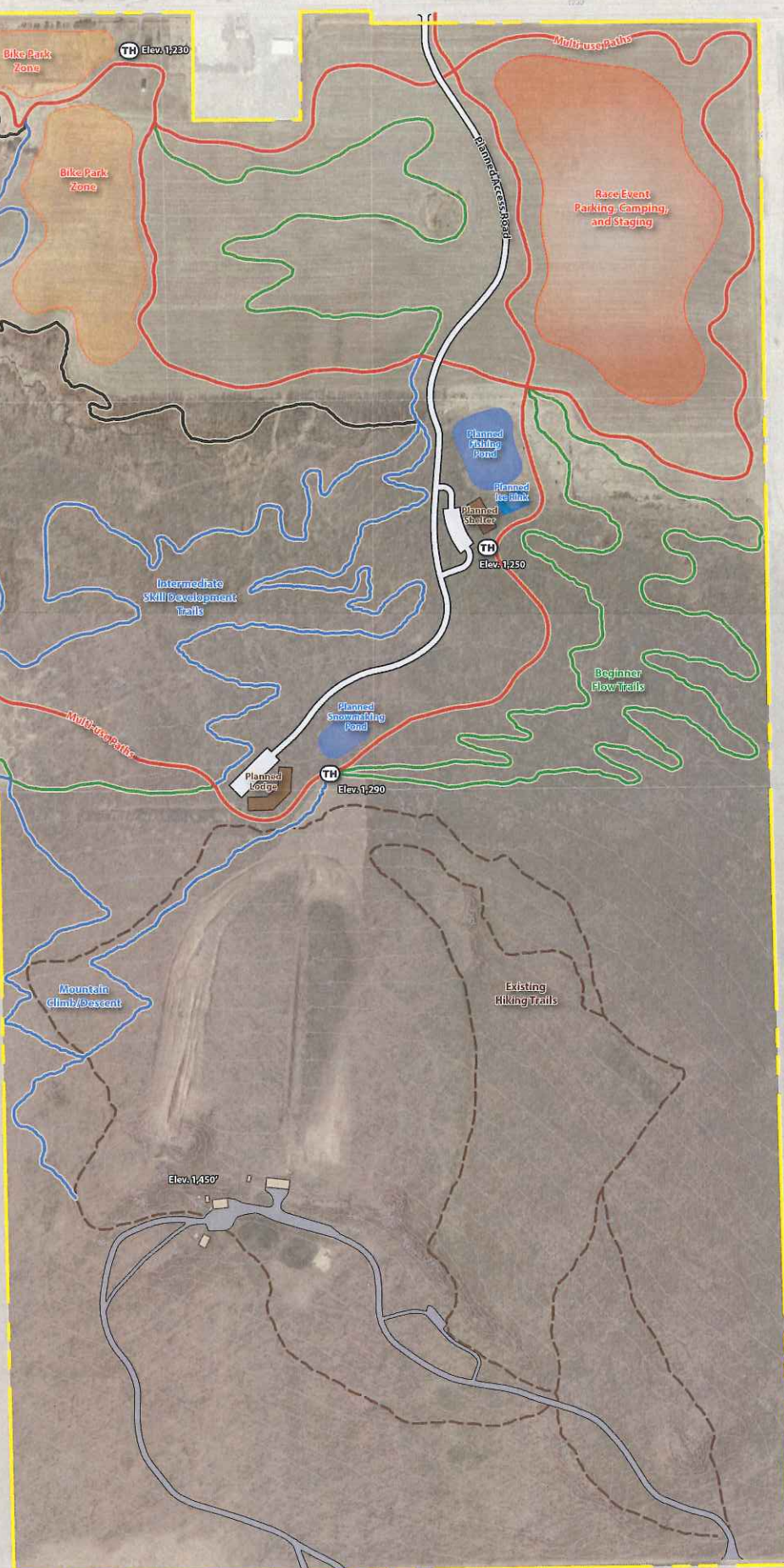
Prepared for:



Note: This map is for planning purposes only.
Property boundary is approximate.
Do not use for design development or
construction estimates.

10 Foot Index Contours

0 250 500 1,000 Feet



WOOD COUNTY STATE WILDLIFE AREA ADVISORY COMMITTEE RULES OF ORDER

The purpose of the Wood County State Wildlife Area Advisory Committee is to advise the Park and Forestry Committee of action needed to protect the interests of the residents of Wood County and residents of the State of Wisconsin in the management of the Wood County State Wildlife Area.

1. The Wood County State Wildlife Area Advisory Committee (the Committee) shall be made up of 9 residents of Wood County. No Department of Natural Resources employees or County Board members may be eligible to serve on the Committee.
2. Members of the Committee will serve 3-year terms, staggered, so that 3 terms will expire each year on June 30th.
3. The function of the Committee will be advisory only and is responsible for reporting to the Park and Forestry Committee.
4. Applications and resumes for appointment to the Committee are to be filed with the County Forest Administrator who will submit them to the Park and Forestry Committee for their review. The Park and Forestry Committee will recommend three candidates, for appointment to the Committee, to the County Board Chair each year. The County Board Chair will make the appointments.
5. The Committee will follow the rules of parliamentary practice as contained in Robert's Rules of Order. Any deviation from Robert's Rules of Order will be by majority vote and only for specific issues.
6. An election will be held at the first meeting of the Committee, after the annual appointment of the new members. The members of the Committee will elect a chair, vice chair, and secretary.
7. Members of the Committee will not receive per diem or reimbursement from the County for mileage driven.
8. The Committee Chair will call all meetings, draft the agendas, and preside over the meetings of the Committee. The Agendas will be forwarded to the secretary of the Committee.

9. The secretary of the Committee will submit the meeting agendas to the Forest Administrator's office by the Wednesday of the week before the meeting is to be held.

The secretary of the Committee will take all minutes, including all motions, seconds, and supporting information. The minutes of the meeting will be submitted to the County Forest Administrator within ten (10) days of the meeting, to be put on the agenda of, and for the consideration of, the Park and Forestry Committee who will take all official action. The secretary shall send a copy of the minutes to each Committee member.

10. The vice chairperson will chair the meeting in the absence of the chairperson.
11. Any Committee member, with two or more unexcused absences occurring in one year, may be removed from the Committee by majority vote of the Park and Forestry Committee.
12. Five (5) members of the Committee constitutes a quorum.
13. The Committee will consider and make recommendations on issues, which are brought properly before them, and will report these recommendations to the Park and Forestry Committee.
14. All rules pertaining to County Committees apply to this Committee, unless otherwise provided for above.

Returning
Applicant

WOOD COUNTY STATE WILDLIFE AREA ADVISORY COMMITTEE
WOOD COUNTY

RECEIVED

APPLICANT QUESTIONNAIRE

JAN 19 2018

Wood County Park & Forestry

Name: _____

Address: _____



Occupation: _____

WONR- RETIRED WILDLIFE BIOLOGIST

Date: _____

Home Phone: 715- 423-4876 Work Phone: _____

Please respond to the following questions to assist the Highway Infrastructure & Recreation Committee in evaluating your application. You may attach additional pages or write on the back if needed.

1. Are you a member of any conservation/outdoor related organization(s)? If so, please list the organization(s), your year(s) of membership, and any office(s) held.

THE WILDLIFE SOCIETY - National Wild Turkey Federation

QUALITY WHITETAILS DEER ASSN RUFFED GROUSE SOCIETY (LIFER)

2. List any specific ways in which you have utilized the Wood County State Wildlife Area. Past Years

Ongoing (Former LIFER)

HUNTING DEER

3. Please comment on how you feel your background, interests, and/or experiences would be of benefit to the Wildlife Area, and list your specific background or training pertaining to natural resources (if any).

30 YEARS (1966-1996) at SANDHILL WILDLIFE AREA

and 1962-63 as WILDLIFE BIOLOGIST

4. Why do you wish to be appointed to the Citizens Advisory Committee?

LONG WORKING KNOWLEDGE of WILDLIFE Mgt Issues
STANDING Research

5. If there were one thing you could change pertaining to the Wildlife Area, regardless of any limitations (such as budget, manpower, etc.), what would you want to change?

Initiate FORMATION of a FRIENDS GROUP
PUBLICIZE THE PROPERTY WHENEVER POSSIBLE TO ILLUSTRATE

6. List any other qualifications you may have

Author of NUMEROUS Hunter FINANCIAL Support
POPULAR & TECHNICAL TIRU P-R FUNDING and Better

7. Additional Comments:

Avoid Binder Ruffed Grouse, In form THE Public about
TURKEY'S & Deer Its Importance to Wildlife

TAUGHT VARIOUS
Course on Frog Prairie TAX of Sportivity
RESTORATION - CONDUCTED Tours of Sandhill ARM of Ammo

WOOD COUNTY PARKS & FORESTRY DEPARTMENT; 111 W. JACKSON ST; WISCONSIN RAPIDS, WI 54495

WITH EMPHASIS on WILDLIFE Benefits etc

RECEIVED

WOOD COUNTY STATE WILDLIFE AREA ADVISORY COMMITTEE
WOOD COUNTY

JAN 29 2018

Returning
Applicant

APPLICANT QUESTIONNAIRE

Wood County Park & Forestry
Name:

JIM WINKLER

Address:

365 Buehler Ave, NeKOOSA, WI 54451

Occupation:

Retired

Date:

1/25/18

cell

Home

Phone:

715 570 4577

EMail

Work

Phone:

WINKLER Jim @ Hotmail

CG 2

Please respond to the following questions to assist the Highway Infrastructure & Recreation Committee in evaluating your application. You may attach additional pages or write on the back if needed.

1. Are you a member of any conservation/outdoor related organization(s)? If so, please list the organization(s), your year(s) of membership, and any office(s) held.

WISCONSIN TRAPPER - Life Member

DELTA WATERFOWL - 20 year

DUCKS UNLIMITED 25 years

WOOD CO. CONSERVATION COM. 5 yr
HEART OF WISCONSIN CON. CLUB 5 yr

NATIONAL TRAPPERS 15 yrs

FUR TALKERS OF AMERICA 10 yr

2. List any specific ways in which you have utilized the Wood County State Wildlife Area.

I use the Area for Hunting and Exploring - especially with The Grand Kids

3. Please comment on how you feel your background, interests, and/or experiences would be of benefit to the Wildlife Area, and list your specific background or training pertaining to natural resources (if any).

I have A Degree IN Science FROM UWSP & have Taught Life Science for 30 years in the NeKOOSA schools. I try to keep current on wildlife issues & understand how

4. Why do you wish to be appointed to the Citizens Advisory Committee?

to Assist in Improving the Area for all outdoor Enthusiasts

5. If there were one thing you could change pertaining to the Wildlife Area, regardless of any limitations (such as budget, manpower, etc.), what would you want to change?

The Waterfowl habitat Especially the Spring habitat to increase the breeding capacity.

6. List any other qualifications you may have.

Willing to listen to others concerns - Willing to work on issues the Need attention.

7. Additional Comments:

WOOD COUNTY STATE WILDLIFE AREA ADVISORY COMMITTEE
WOOD COUNTY

New Applicant

APPLICANT QUESTIONNAIRE

RECEIVED

APR 02 2018

Name: Dawn Schmutzer

Address: 404 Wood Ave, WI Rapids, WI 54494

Wood County Park & Forestry

Occupation: Exec Admin Asst

Email Address: dschmutzer@co.wood.wi.us

Date: 4-2-18 Home Phone: 715-423-7098 Work Phone: 715-421-8822

Please respond to the following questions to assist the Highway Infrastructure & Recreation Committee in evaluating your application. You may attach additional pages or write on the back if needed.

1. Are you a member of any conservation/outdoor related organization(s)? If so, please list the organization(s), your year(s) of membership, and any office(s) held.

Boy Scouts, Merit Badge Counselor 2010-2015, Troop 187 board member 2010-2015

2. List any specific ways in which you have utilized the Wood County State Wildlife Area.

We hike, drive and fish as a family in the Sandhill Wildlife area. We enjoy all of the parks (city, county and state).

3. Please comment on how you feel your background, interests, and/or experiences would be of benefit to the Wildlife Area, and list your specific background or training pertaining to natural resources (if any).

I grew up with hunting and fishing and nature-based trips, vacations, etc. I love the outdoors. My family now owns 40 acres in Price County. That land is our pride and joy. We will be doing years of conservation on it.

4. Why do you wish to be appointed to the Citizens Advisory Committee?

I like being involved in my community. I love the outdoors so this is a passion of mine. I avoided commitments while my kids were growing up, but they are now old enough that I can begin to engage again and have more free time to fill with what I like to do.

5. If there were one thing you could change pertaining to the Wildlife Area, irregardless of any limitations (such as budget, manpower, etc.), what would you want to change?

Create and maintain hiking/biking trails. Update camping so it is not just primitive camping allowed. Review parking, update if needed. Create UTV/Snowmobile trails.

6. List any other qualifications you may have.

I am very organized, detail oriented and enjoy taking meeting minutes. I love doing the work that needs to be done and seeing the successes of a group.

7. Additional Comments:

WOOD COUNTY STATE WILDLIFE AREA ADVISORY COMMITTEE
WOOD COUNTY

New Applicant

APPLICANT QUESTIONNAIRE

APR 06 2018

Name: Craig Rasmussen
Address: 1110 19th St. So.
Occupation: Supervisor Wood County Human Services Dept.
Email Address: CRasmussen@co.wood-wi.us
Date: 04/06/18 Home Phone: 715-459-5917 Work Phone: 715-421-8618

Please respond to the following questions to assist the Highway Infrastructure & Recreation Committee in evaluating your application. You may attach additional pages or write on the back if needed.

1. Are you a member of any conservation/outdoor related organization(s)? If so, please list the organization(s), your year(s) of membership, and any office(s) held. Not at this time. I have been a member of Ducks Unlimited in the past.
2. List any specific ways in which you have utilized the Wood County State Wildlife Area. I have enjoyed duck hunting, deer hunting, grouse hunting, turkey hunting and camping activities.
3. Please comment on how you feel your background, interests, and/or experiences would be of benefit to the Wildlife Area, and list your specific background or training pertaining to natural resources (if any). I have no specific training pertaining to natural resources. It is my strong interest in hunting and ensuring that this wildlife area remains a resource for all to enjoy that is driving my interest in serving on this Committee.
4. Why do you wish to be appointed to the Citizens Advisory Committee? As stated above - my strong interest in helping preserve and develop this tremendous resource is what has prompted me to apply for membership.
5. If there were one thing you could change pertaining to the Wildlife Area, regardless of any limitations (such as budget, manpower, etc.), what would you want to change? Over the years there has been significant changes in how water resources are allocated - not always just due to rainfall - developing a more consistent approach would benefit hunters and waterfowl as well.
6. List any other qualifications you may have. I do not have any specific qualifications.
7. Additional Comments: I feel that I would have a lot to offer and that I am quite comfortable working within a team model, as well as taking on a leadership role in whatever I am doing.

New Applicant

WOOD COUNTY STATE WILDLIFE AREA ADVISORY COMMITTEE
WOOD COUNTY

RECEIVED

APR 30 2018

Wood County Park & Forestry

APPLICANT QUESTIONNAIRE

Name: Al Peterson
Address: 7850 Lonesome Rd., Wisconsin Rapids, WI 54495
Occupation: Retired - Forester
Email Address: midnightrunnerap + yahoo.com
Date: 4/18/18 Home Phone: 715-486-6877 Work Phone: _____

Please respond to the following questions to assist the Highway Infrastructure & Recreation Committee in evaluating your application. You may attach additional pages or write on the back if needed.

1. Are you a member of any conservation/outdoor related organization(s)? If so, please list the organization(s), your year(s) of membership, and any office(s) held.
No
2. List any specific ways in which you have utilized the Wood County State Wildlife Area.
Live near the area, enjoy scenic rides through the location
3. Please comment on how you feel your background, interests, and/or experiences would be of benefit to the Wildlife Area, and list your specific background or training pertaining to natural resources (if any).
Bachelor of Science Degree Forestry both in Management & Administration
Minors Natural Resource Management & Business Administration
4. Why do you wish to be appointed to the Citizens Advisory Committee?
Ensure wildlife & forest management continue to be viewed in a holistic manner
5. If there were one thing you could change pertaining to the Wildlife Area, regardless of any limitations (such as budget, manpower, etc.), what would you want to change?
At this point in time I would defer until I reviewed all pertinent information
6. List any other qualifications you may have.
My experience covers a multitude of locations both in and out of the State of Wisconsin facing numerous resource based decisions. I grew up enjoying the forests & wildlife of Wood County and am now back in the area.
7. Additional Comments:
I would look forward to working co-operatively with the Committee

WOOD COUNTY STATE WILDLIFE AREA ADVISORY COMMITTEE
WOOD COUNTY

New Applicant

APPLICANT QUESTIONNAIRE

APR 23 2018

Wood County Park & Forestry

Name: Nancy Esser

Address: 7641 Richfield Wood Rd Arpin WI 54410

Occupation: Research Program Manager, UW Marshfield Ag Research Station

Email Address: nancy.esser@wisc.edu

Date: 4-18-18 Home Phone: 715 650 7059 Work Phone: 715 650 7457

Please respond to the following questions to assist the Highway Infrastructure & Recreation Committee in evaluating your application. You may attach additional pages or write on the back if needed.

1. Are you a member of any conservation/outdoor related organization(s)? If so, please list the organization(s), your year(s) of membership, and any office(s) held.

* Please see attached answers

2. List any specific ways in which you have utilized the Wood County State Wildlife Area.

3. Please comment on how you feel your background, interests, and/or experiences would be of benefit to the Wildlife Area, and list your specific background or training pertaining to natural resources (if any).

4. Why do you wish to be appointed to the Citizens Advisory Committee?

5. If there were one thing you could change pertaining to the Wildlife Area, regardless of any limitations (such as budget, manpower, etc.), what would you want to change?

6. List any other qualifications you may have.

7. Additional Comments:

Q1. I had been a member of the Wisconsin Woodland Owners Association (in the early 2000's) and the Wisconsin Woodland Leaders Institute (2001). I had not held any offices in either position. I sat on an advisory committee with the UWSP Becoming an Outdoor Woman (BOW) program and participated in the program from 2000 – 2004.

Q2. My family and I are avid users of the Sandhill Wildlife Areas (I have not been to the Meadow Valley Area). We routinely visit Sandhill during spring, summer, and fall. We have enjoyed Sandhill on bikes, vehicle tour, and walking the trails. I am passionate about wildflowers and enjoy identifying and photographing wildflowers in the area during the different seasons. We have watched the buffalo, picked the berries (I have made jam with the berries. I think they were huckleberry?), canoed/kayaked, we like watching the deer and have seen badger and porcupine in the area as well. The wetlands are beautiful; we've seen all sorts of waterfowl. Primarily, I have used the area for touring and recreation. My first experience with Sandhill was years ago when I set up a summer program for youth (in the early 90's) and was given a detailed tour of what the area has to offer.

Q3. My professional background is in dairy science, research, management, creating and managing budgets, and working with protocols. These experiences in my background will help me maintain objectivity and use science-based strategies for decision making in an advisory capacity. Professionally, I manage a staff of 22 people at a 1000-acre University of Wisconsin research farm facility. I manage the compliance to animal experimental protocols and write station standard operating procedures. The research facility has a significant dairy and agronomy component. I am part of a larger group in Marathon County that is establishing a watershed in the region where the research farm is located.

My home sits on 92-acres of woodlands. We own 80-acres in the Town of Cary, part of the Managed Forest Law program. Personally, I have a great interest in sustainable forestry, water quality, healthy soil, and protecting our natural resource areas in Central Wisconsin.

Q4. Sandhill has been a part of my life for almost 30 years. I love this area and, upon seeing this advertisement for the advisory committee, wanted to take a chance and apply for the position.

Q5. At Sandhill, hire a full time programmer/educator and build a larger education and nature center to increase use of the area. In my opinion, the long term sustainability of these areas requires public foot/vehicle traffic. If they do not use the area or believe there is worth in the areas, future funding is likely to decrease. I am sure the budget for maintenance of the Wood Co. State Wildlife Areas is quite high. These areas offer incredibly diverse ecosystems, habitats, and wildlife. I have not been to the Meadow Valley Area. I know where it is located but have not actually visited that area.

Q6. As stated previously, I have significant experience working with budgets, managing budget cuts, managing staff, writing grants, writing and reviewing protocols. I sit on several UW College of Ag Life and Sciences committees and work routinely with faculty, administrators, and academic staff (they don't always agree). I am involved in several local organizations (i.e. Farm Tech Days, church, Marshfield Chamber of Commerce, 4-H, school) and work with a wide range of people on those committees. I am able to set goals that are realistic, achievable and purposeful – short and long range. And I can work with dissenting opinions to find common ground.

69. This contract cannot be assigned or subcontracted in part or in whole without prior written approval from the Seller and may be changed or amended only in writing. The Purchaser shall notify the Surety, if any, of such change or amendment.

CONTRACTING PARTIES

70. In this contract, the Seller and the Purchaser include their respective officers, employees, agents, directors, sub-contractors, assignees, partners, representatives, successors, heirs, members and servants.
71. If the Purchaser ceases to exist, in fact or by law, the Seller may immediately terminate this contract and, without waiving any remedies available to it, perform the contract.
72. OSHA Compliance, Danger trees. The Purchaser is responsible to comply with, and assure compliance by all employees or subcontractors with, all Occupational Safety and Health Act (OSHA) requirements for the health and safety of Purchaser's employees, including provisions relating to danger trees. In addition, the Purchaser agrees to notify, and obtain agreement from, the Seller if the Purchaser intends to modify performance required under this Contract for the purpose of compliance with OSHA requirements.

TIMBER SALE CONTRACT EXTENSION POLICY

The Wood County Highway, Infrastructure and Recreation Committee is responsible for the extension of timber sale contracts and would like to see sales cut in a timely manner. The Committee grants contract extensions and associated stumpage increases at their discretion. Each contract extension/stumpage increase will be determined on a case by case basis with factors such as: access, weather, ground conditions, silvicultural objectives, balances owed, natural disasters, etc. taken into account.

In general, the Committee may be more willing to grant first extensions without any stumpage increase if a job has been started. Contracts that are two years old with no activity, and contracts that have had more than one extension are of special concern and are more likely to have stumpage increases assessed. There may be special contracts that have no flexibility in length due to timing of silvicultural considerations, storm damage, etc. In these cases contract length will be fixed, and the contractor should expect to be penalized for not completing the sale in the time specified in the contract. Additionally, contracts that have had multiple extensions may not be extended in the future.

Excerpt from T-Sale contracts

Committee Report

County of Wood

Report of claims for: PARKS & FORESTRY DEPT.

For the period of: APRIL FOR (MAY HIRC)

For the range of vouchers: 21180104 - 21180140

Voucher	Vendor Name	Nature of Claim	Doc Date	Amount	Paid
21180104	ACE HARDWARE	Supplies for SP	04/02/2018	\$32.52	P
21180105	ALLIANT ENERGY/ WP&L	Electric Service-Nepco & ATV Shelters	04/02/2018	\$295.47	P
21180106	GREEN SANDRA M	Mileage Reimbursement-WPRA Conf.	04/02/2018	\$130.80	P
21180107	KRUG REBEKAH	Shelter Canceled Reimbursement	04/02/2018	\$185.00	P
21180108	POMP'S TIRE SERVICE INC - GREEN BAY	Turf Tire, Tube, Labor-NP	04/02/2018	\$54.00	P
21180109	QUALITY DOOR & HARDWARE	Shelter Doors & Install-NP	04/02/2018	\$15,347.00	P
21180110	RAPIDS RENTAL & SUPPLY	Chainsaw Supplies for SP	04/02/2018	\$109.88	P
21180111	TEAM MATTHEWS	Oil Change-2012 Dodge Ram	04/02/2018	\$35.48	P
21180112	WATER WORKS & LIGHTING COMM	Electric Service for SP	04/02/2018	\$632.73	P
21180113	WISCONSIN COUNTY FOREST ASSOCIATION	Spring Forester Conference	04/02/2018	\$65.00	P
21180114	WOODTRUST BANK NA	Banner, Cartridges, SP-Cabin Supplies	04/02/2018	\$1,127.67	P
21180115	BUDS CORNER MART	Gasoline for SP Vehicles	04/06/2018	\$225.00	P
21180116	CRESCENT ELECTRIC SUPPLY CO	Conduit, Etc.- SP Shop Addition	04/06/2018	\$61.51	P
21180117	FASTENAL COMPANY	Tools for SP	04/06/2018	\$29.12	P
21180118	MENARDS-MARSHFIELD	Tools for NP	04/06/2018	\$24.21	P
21180119	OAKDALE ELECTRIC CO	Electric Service for DP	04/06/2018	\$840.63	P
21180120	PITTSVILLE FARM & HOME CENTER	Battery & Assorted Supplies-DP	04/06/2018	\$175.21	P
21180121	POMP'S TIRE SERVICE INC - GREEN BAY	Turf Tire, Stem & Labor-NP	04/06/2018	\$38.00	P
21180122	PROVISION PARTNERS	Gas for Small Engines at DP	04/06/2018	\$25.66	P
21180123	ADVANCED DISPOSAL	Garbage Service for Parks	04/12/2018	\$950.00	P
21180124	ALLIANT ENERGY/ WP&L	Electric Service for NP & PB	04/12/2018	\$715.44	P
21180125	CARPET CITY	Flooring W/Install - SP Cabin	04/12/2018	\$2,630.58	P
21180126	INSIGHT FS	Diesel and LP for SP & DP	04/12/2018	\$658.85	P
21180127	LAKESIDE OASIS LLC	Gasoline for DP Vehicles	04/12/2018	\$302.76	P
21180128	MARCOUX SCOTT	Shelter Cancellation Refund	04/12/2018	\$185.00	P
21180129	RICH BUILDERS & SUPPLY LLC	SP Shop Roof & Addition-1st Payment	04/12/2018	\$14,050.00	P
21180130	SCHIERL INC	Chipper Truck Tire, Etc.-SP	04/12/2018	\$168.08	P
21180131	ADVANCE AUTO PARTS	Oils, Etc. for Equipment-DP	04/16/2018	\$43.96	P
21180132	HOME DEPOT CREDIT SERV (Parks)	Building & Park Supplies-NP/SP	04/16/2018	\$667.57	P
21180133	POWER PAC INC	Tractor Maintenance Items-SP	04/16/2018	\$250.89	P
21180134	JF AHERN CO	Fire Extinguisher Maintenance	04/23/2018	\$1,282.00	P
21180135	CROP PRODUCTION SERVICES	Buckthorn Killer	04/23/2018	\$305.22	P
21180136	DIAMOND BUSINESS GRAPHICS	Reserved Campsite Tickets-5000	04/23/2018	\$229.60	P
21180137	FUTUREWOOD CORPORATION	Return Perform Bonds-#716 & #717	04/23/2018	\$14,897.47	P
21180138	RENT-A-FLASH INC	Signs for Parks	04/23/2018	\$228.25	P
21180139	SCHIERL INC	6-Tires w/Mount Etc.-Tool Truck	04/23/2018	\$911.75	P
21180140	SCHREINER FORESTRY INC	Cut & Skid Campground Firewood	04/23/2018	\$8,984.25	P

Grand Total:

\$66,896.56

Signatures

Committee Chair:

Committee Member:

Committee Member:

Committee Member:

Committee Member:

Committee Member:

Committee Member:

Committee Member:

Committee Member:



BL ACCT ████████-00000000
 WOOD CO PARK & FORESTRY
 Account Number: #### #### ####
 Page 3 of 4

Cardholder Account Summary						
CHAD SCHOOLEY #### #### ####			Payments & Other Credits \$30.27-	Purchases & Other Charges \$219.23	Cash Advances \$0.00	Total Activity \$188.96
Cardholder Account Detail						
Trans Date	Post Date	Plan Name	Reference Number	Description	Amount	
03/08	03/11	PBUS01	24896308068900018597470	THE POWER WASH STORE 414-3519274 WI	\$199.35 ✓	
03/13	03/15		74896308073900018900821	CREDIT VOUCHER (TAX)	\$10.39-	
03/15	03/16	PBUS01	24445008075400114028036	THE POWER WASH STORE 414-3519274 WI	\$19.88 ✓	
				WM SUPERCENTER #1202 WISCONSIN RAP WI		
03/15	03/18		74226388076360571052876	CREDIT VOUCHER	\$19.88-	
				WAL-MART #1202 WISCONSIN RAP WI		

Cardholder Account Summary						
DENNIS QUINNELL #### #### #### 0000			Payments & Other Credits \$0.00	Purchases & Other Charges \$767.65	Cash Advances \$0.00	Total Activity \$767.65
Cardholder Account Detail						
Trans Date	Post Date	Plan Name	Reference Number	Description	Amount	
03/01	03/04	PBUS01	24692168061100388959514	IN *STEVES RENATLS WISCONSIN RAP WI	\$160.00	
03/08	03/09	PBUS01	24692168067100358892467	Amazon.com AMZN.COM/BILL WA	\$502.59	
03/15	03/15	PBUS01	24692168074100576013087	GIH*GLOBALINDUSTRIALEQ 800-645-2986 FL	\$105.06	

Cardholder Account Summary						
SANDRA GREEN #### #### ####			Payments & Other Credits \$0.00	Purchases & Other Charges \$171.06	Cash Advances \$0.00	Total Activity \$171.06
Cardholder Account Detail						
Trans Date	Post Date	Plan Name	Reference Number	Description	Amount	
03/05	03/06	PBUS01	24906418064051865810894	SMK*SURVEYMONKEY.COM 971-2445555 CA	\$35.00	
03/07	03/09	PBUS01	24453448067142701642178	BANNERS.COM KENSINGTON MN	\$126.10	
03/15	03/16	PBUS01	24226388075400001710549	WAL-MART #1202 WISCONSIN RAP WI	\$9.96	

- 1) - Survey for Open Spaces Plan
 2) - PB Vendor Event Banner
 3) - Supplies for Vendor Event

1. - Floor Scrubber rented for SP Cabin
 2. - Water Free Urinal Cartridges, safety glasses
 3. - Wall Cabinet for SP Cabin

- 1) - graffiti Remover w/tox charged
 2) - Tax Credit
 3) - Power Cord
 4) - Power Cord - returned

NOTICE OF QUOTES

The Wood County Highway Infrastructure and Recreation Committee will accept sealed quotes only (no faxed quotes accepted) up until 10:00 A.M. (CST)- (WARNING- Mail delivery is after 10:00 A.M.) on Wednesday, May 2, 2018 at the Highway Commissioner's Office, 555 - 17th Avenue North, Wisconsin Rapids, WI 54495-1966 for the following:

Drilling, Blasting, Crushing, Stockpiling, Sampling and Testing of approximately 25,000 tons $\frac{3}{4}$ " Base Aggregate Dense, at the Wood County Smith Pit Quarry, 7258 CTH "B".

All contractors shall comply with all state and federal regulations.

Specifications, Quoting Procedure and Forms may be had by applying at the above office.

The Committee reserves the right to reject any or all quotes or to accept any quote they deem most advantageous to Wood County.

By Order of the Wood County Highway Infrastructure and Recreation Committee:



Douglas J. Passineau, Highway Commissioner

GENERAL QUOTING PROCEDURE

QUOTE OPENING: May 2, 2018

10:00 A.M. (CST)

To comply with the NOTICE OF QUOTES, the following General Quoting Procedure and Specifications are to govern:


All quotes must be in the Office of the County Highway Commissioner, 555- 17th Avenue North, Wisconsin Rapids, WI by 10:00 A.M. (CST), Wednesday, May 2, 2018. Quotes must be sealed and properly identified giving the name and address of the quoter. Each quote must be in a separate container or envelope and marked **QUOTE ON DRILLING, BLASTING, CRUSHING, STOCKPILING, SAMPLING AND TESTING AGGREGATE**. All quotes will be publicly opened and read at the specified time by the County Highway Infrastructure and Recreation Committee or its authorized representatives and only TOTAL quotes will be read.

All quotes must be entered and submitted on the specified form of Proposal prepared by the Highway Commission and only quotes submitted on these forms will be considered for award purposes by the Commissioner. The General Quoting Procedure, Specifications and Proposal shall constitute the quote of each quoter and must be attached in the above order. Quoters shall attach such additional information to their proposal, as they deem advisable and necessary for the benefit of the Committee in assembling comparative specifications.

The Committee reserves the right to consider all proposals for a period not to exceed thirty (30) days from the date of opening. The Committee will either award the contract or reject all quotes within that time. Each quoter will be allowed to have a representative appear before the Committee to explain his quote and specifications of the product as quoted. A time limit for each quoter will be established by the Committee at the day of letting. All quotes are to be NET, FOB WISCONSIN RAPIDS, WISCONSIN.

The Wood County Highway Infrastructure and Recreation Committee reserves the right to reject any or all quotes or parts, thereof, and to WAIVE any technicality in any quote submitted and to make such award as they deem most advantageous to Wood County.

By Order of the Wood County Highway Infrastructure and Recreation Committee:



Douglas J. Passineau, Highway Commissioner

Aggregate Specifications & Requirements

1. SCOPE OF WORK

The work shall consist of providing adequate machines and labor to pump water out of the quarry, drilling and blasting into the floor of the quarry, transporting the quarry rock to the crusher, crushing the rock to the specified gradation, stockpiling, and testing.

2. LOCATION

Pit Location

7258 CTH B, Pittsville, WI 54466

Town of Carry, Wood County

Located 0.75 miles north of Wood County Trunk Highway (CTH) CC on CTH B.

3. EQUIPMENT

It is the contractor's responsibility to provide all necessary equipment to pump water from the pit and maintain the water level for safe working conditions, and provide all necessary equipment to drill, blast, transport, crush and stockpile the products as specified below.

4. METHOD OF MEASUREMENT

The crushed aggregate base course will be measured in cubic yards (volume) in its final stockpile, computed by surveying the pile. The volume will be converted to tons using a field tested unit of weight in pounds/cu. ft. and compared to the actual belt scale.

The unit of weight (lb/cu.ft.) will be an agreed unit of weight between the Engineer and Contractor before work begins. There is a sample pile on site to use for comparison.

5. TIME OF COMPLETION

Contractor shall complete crushing base aggregate and have stock pile available for County use by July 20, 2018.

6. QMP BASE AGGREGATE

A Description

A.1 General

- (1) This special provision describes contractor quality control (QC) sampling and testing for base aggregates, documenting those test results, and documenting related

production and placement process changes. This special provision also describes department quality verification (QV), independent assurance (IA), and dispute resolution.

- (2) Conform to standard spec 301 and 305 of the Wisconsin DOT Standard Specifications for Highway and Structure Construction 2016 Edition as modified here in this special provision. Apply this special provision to all of the Base Aggregate Dense.
- (3) Provide and maintain a quality control program, defined as all activities related to and documentation of the following:
 1. Production and placement control and inspection.
 2. Material sampling and testing.
- (4) Chapter 8 of the Wisconsin DOT Construction and Materials Manual provides additional detailed guidance for QMP work and describes required sampling and testing procedures. The contractor may obtain the CMM from the department's website at:

<http://roadwaystandards.dot.wi.gov/standards/cmm/index.htm>

B Materials

B.1 Quality Control Plan

- (1) Submit a comprehensive written quality control plan to the engineer at or at least 2 weeks prior to production beginning. Do not commence production before the engineer reviews and comments on the plan.
- (2) Do not change the quality control plan without the engineer's review. Update the plan with changes as they become effective. Provide a current copy of the plan to the engineer and post in each of the contractor's laboratories as changes are adopted. Ensure that the plan provides the following elements:
 1. An organizational chart with names, telephone numbers, current certifications and/or titles, and roles and responsibilities of QC personnel.
 2. The process used to disseminate QC information and corrective action efforts to the appropriate persons. Include a list of recipients, the communication means that will be used, and action time frames.
 3. Test results for all aggregates requiring QC testing.
 4. Descriptions of stockpiling and hauling methods.
 5. Locations of the QC laboratory, retained sample storage, and where control charts and other documentation is posted.
 6. An outline for resolving a process control problem. Include responsible personnel, required documentation, and appropriate communication steps.

B.2 Personnel

- (1) Have personnel certified under the department's highway technician certification program (HTCP) perform sampling, testing, and documentation as follows:

Required certification Level:	Sampling or Testing Roles:
Aggregate Technician IPP Aggregate Sampling Technician Aggregate Assistant Certified Technician (ACT-AGG)	Aggregate Sampling ^{///}
Aggregate Technician IPP Aggregate Assistant Certified Technician (ACT-AGG)	Aggregate Gradation Testing, Aggregate Fractured Particle Testing, Aggregate Liquid Limit and Plasticity Index Testing

^{///} Plant personnel under the direct observation of an aggregate technician certified at level one or higher may operate equipment to obtain samples.

- (2) A certified technician must coordinate and take responsibility for the work an ACT performs. Have a certified technician ensure that all sampling and testing is performed correctly, analyze test results, and post resulting data. No more than one ACT can work under a single certified technician.

B.3 Quality Control Documentation

B.3.1 General

- (1) Submit base aggregate production documentation to the engineer within 10 business days after completing base production. Ensure that the submittal is complete, neatly organized, and includes applicable project records and control charts.

B.3.2 Records

- (1) Document all production observations, inspection records, and control adjustments daily in a permanent field record. Also include all test results in the project records. Provide test results to the engineer within 6 hours after obtaining a sample. Post or distribute tabulated results using a method mutually agreeable to the engineer and contractor.

B.3.3 Control Charts

- (1) Plot gradation and fracture on the appropriate control chart as soon as test results are available. Format control charts according to CMM 8.30. Include the project number on base production control charts. Maintain separate control charts for each base aggregate size, source or classification, and type.
- (2) Provide control charts to the engineer within 6 hours after obtaining a sample. Post or distribute charts using a method mutually agreeable to the engineer and contractor. Update control charts daily to include the following:
 1. Contractor individual QC tests.
 2. Department QV tests.
 3. Department IA tests.
 4. Four-point running average of the QC tests.

- (3) Except as specified under B.7.2.1 for out-of-tolerance QV tests, include only QC tests in the running average. The contractor may plot process control or informational tests on control charts, but do not include these tests, conforming QV tests, or IA tests in the running average.

B.4 Contractor Testing

- (1) Test gradation, fracture, liquid limit and plasticity index for each base aggregate size, source or classification, and type.
- (2) Test Gradation Frequency

Production (in tons)	Minimum Frequency Per Day
≤ 1500	1
> 1500 - ≤ 3000	2
> 3000	3

- (3) Split each contractor QC sample and identify it according to CMM 8.30. Retain the split in a dry, protected location. If requested for department comparison testing, deliver the split to the engineer within one business day.
- (4) The engineer may require additional sampling and testing to evaluate suspect material or the technician's sampling and testing procedures.
- (5) Test fracture for each gradation test until the fracture running average is above the lower warning limit. Subsequently, the contractor may reduce the frequency to one test per 5 gradation tests if the fracture running average remains above the warning limit.
- (6) Test the liquid limit and plasticity index for the first gradation test. Subsequently, test the liquid limit and plasticity index a minimum of once per 5 gradation tests.

B.5 Test Methods

B.5.1 Gradation

- (1) Test gradation using a washed analysis conforming to the following as modified in CMM 8.60:

Gradation	AASHTO T 27
Material finer than the No. 200 sieve	AASHTO T 11
- (2) Maintain a separate control chart for each sieve size specified in standard spec 305 for each base aggregate size, source or classification, and type. Set control and warning limits based on the standard specification gradation limits as follows:
 1. Control limits are at the upper and lower specification limits.
 2. There are no upper warning limits for sieves allowing 100 percent passing and no lower control limits for sieves allowing 0 percent passing.

3. Dense graded warning limits, except for the No. 200 sieve, are 2 percent within the upper and lower control limits. Warning limits for the No. 200 sieve are set 0.5 percent within the upper and lower control limits.

B.5.2 Fracture

- (1) Test fracture conforming to CMM 8.60. The engineer may waive fractured particle testing on quarried stone.
- (2) Maintain a separate fracture control chart for each base aggregate size, source or classification, and type. Set the lower control limit at the contract specification limit, either specified in another special provision or in table 301-2 of standard spec 301.2.4.5. Set the lower warning limit 2 percent above the lower control limit. There are no upper limits.

B.5.3 Liquid Limit and Plasticity

- (1) Test the liquid limit and plasticity according to ASSHTO T 89 and T 90.
- (2) Ensure the material conforms to the limits specified in standard spec table 301-2.

B.6 Corrective Action

B.6.1 General

- (1) Consider corrective action when the running average trends toward a warning limit. Take corrective action if an individual test exceeds the contract specification limit. Document all corrective actions both in the project records and on the appropriate control chart.

B.7 Department Testing

B.7.1 General

- (1) The department will conduct verification testing to validate the quality of the product and independent assurance testing to evaluate the sampling and testing. The department will provide the contractor with a listing of names and telephone numbers of all QV and IA personnel for the project, and provide test results to the contractor within 2 business days after the department obtains the sample.

B.7.2 Verification Testing

B.7.2.1 General

- (1) The department will have an HTCP technician, or ACT working under a certified technician, perform QV sampling and testing. Department verification testing personnel must meet the same certification level requirements specified in B.2 for contractor testing personnel for each test result being verified. The department will notify the contractor before sampling so the contractor can observe QV sampling.
- (2) The department will conduct QV tests of each base aggregate size, source or classification, and type during production conforming to the following:
 1. One non-random test on the first day of production.
 2. At least one random test per 25,000 tons, or fraction of 25,000 tons, produced.

3. The department will conduct QV tests in a separate laboratory and with separate equipment from the contractor's QC tests. The department will use the same methods specified for QC testing.
4. The department will assess QV results by comparing to the appropriate specification limits. If QV test results conform to the specification, the department will take no further action. If QV test results are nonconforming, add the QV to the QC test results as if it were an additional QC test.

B.8 Dispute Resolution

- (1) The engineer and contractor should make every effort to avoid conflict. If a dispute between some aspect of the contractor's and the engineer's testing program does occur, seek a solution mutually agreeable to the project personnel. The department and contractor may review the data, examine data reduction and analysis methods, evaluate sampling and testing procedures, and perform additional testing. Use ASTM E 178 to evaluate potential statistically outlying data.
- (2) Production test results, and results from other process control testing, may be considered when resolving a dispute.
- (3) If the project personnel cannot resolve a dispute, and the dispute affects payment or could result in incorporating nonconforming product, the department will use third party testing to resolve the dispute. A mutually agreed on independent testing laboratory will provide this testing. The engineer and contractor will abide by the results of the third party tests. The party in error will pay service charges incurred for testing by an independent laboratory. The department may use third party test results to evaluate the quality of questionable materials and determine the appropriate payment. The department may reject material or otherwise determine the final disposition of nonconforming material as specified in standard spec 106.5.

C Payment

- (1) Costs for all sampling, testing, and documentation required under this special provision are incidental to this work. If the contractor fails to perform the work required under this special provision, the department may reduce the contractor's pay.
- (2) For material represented by a running average exceeding a control limit, the department will reduce pay by as much as 20 percent of the contract price for the affected base aggregate. The department will determine the quantity of nonconforming material.

Miscellaneous

Certificate of Insurance will be required from the contractor.
Location of stockpiles will be under the direction of Wood County.
Contractor shall comply with all state and federal regulations.

INDIVIDUAL AGGREGATE PRODUCTION SPECIFICATIONS

SIEVE SIZE	¾" COARSE AGGREGATE PERCENT PASSING	
	Control Limits	Warning Limits
¾"	95 – 100	100
1/2"		
3/8"	50 – 90	52 – 88
#4	35 – 70	37 – 68
#8		
#10	15 – 55	17 – 53
#16		
#30		
#40	10 – 35	12 – 33
#50		
#100		
#200	5 - 15	4 - 14

**PROPOSAL FOR DRILLING, BLASTING, CRUSHING, STOCKPILING, SAMPLING AND TESTING
AGGREGATES**

May 2, 2018

TO: Wood County Highway Infrastructure and Recreation Committee
555 – 17th Avenue North
Wisconsin Rapids, WI 54495-1966

Gentlemen:

We, the undersigned, propose to furnish to the Wood County Highway Commission, 555 – 17th Avenue North, Wisconsin Rapids, WI the following as herein specified by us in accordance with the NOTICE OF QUOTES, General Quoting Procedure and Specifications hereto attached:

Drilling, Blasting, Crushing, Stockpiling, Sampling and Testing of approximately 25,000 tons ¾" Base Course
Aggregate at the Smith Pit Quarry on CTH "B" for the sum of: \$_____.

COMPANY NAME OF BIDDER _____

REPRESENTATIVE _____

TITLE _____

ADDRESS _____

PHONE NO. / CELL _____

E-MAIL _____

NOTICE OF BIDS

The Wood County Highway Infrastructure and Recreation Committee will receive sealed bids only (no faxed bids accepted) up until 10:00 AM (CST) on Wednesday, May 2, 2018 at the Highway Commissioner's Office, 555 - 17th Avenue North, Wisconsin Rapids, WI 54495-1966 for furnishing of the following:

2018 Chemical Warm Mix and Compaction Aid Additive

Specifications may be had by applying at the above office.

The Committee reserves the right to reject any or all bids or to accept any bid they deem most advantageous to Wood County.

By Order of the Wood County Highway Infrastructure and Recreation Committee,

A handwritten signature in black ink, appearing to read "Douglas J. Passineau". The signature is fluid and cursive, with a long horizontal stroke at the end.

Douglas J. Passineau
Wood County Highway Commissioner

BIDDING INSTRUCTIONS FOR WOOD COUNTY'S 2017 CHEMICAL WARM MIX AND
COMPACTION AID ADDITIVE

1. ALL BIDS AND PROPOSALS **MUST** be in the office of the County Highway Commissioner, 555 - 17th Avenue North, Wisconsin Rapids, WI 54495, by 10:00 AM (CST) on **Wednesday, May 2, 2018**. Bids must be sealed and properly identified giving the name and address of the bidder and marked "BID ON CHEMICAL WARM MIX AND COMPACTION AID ADDITIVE". All bids are to be by transport, fob, Wisconsin Rapids plant site, Wisconsin Rapids, WI.
2. Bids will be publicly opened and read at the above listed time by Highway Department personnel. A spreadsheet of the results will be presented to the County Highway Infrastructure and Recreation Committee or its authorized representatives on **Thursday, May 3, 2018** at the Wood County Highway Department.
3. Bidders **MUST** use Wood County's Bid Forms.
4. Bids will be for one year from the date of acceptance. Bidders **MUST STATE** origin of crude for materials on which they bid.
5. These materials will be tested, and any material that does not meet specifications will be rejected and payment for same will be refused.
6. Specify the amount of time to unload shipments; also demurrage for time exceeding allowable waiting time, or a charge for returning a load.
7. Unless otherwise specified, all materials will be ordered by Wood County Highway Department as needed.
8. NO "Certified" check or bond will be necessary with bid, but the successful bidder or bidders may be required to furnish either bond or check.
9. The Committee reserves the right to reject any or all bids, proposals, or options to WAIVE any technicality in any bid, proposal, or option submitted, and to accept any bid, proposal, or option they deem most advantageous to Wood County.

By Order of the Wood County Highway Infrastructure and Recreation Committee,



Douglas J. Passineau
Wood County Highway Commissioner

NOTE: Bids submitted are to be comprised of "NOTICE OF BIDS", BIDDING INSTRUCTIONS, SPECIFICATIONS, and PROPOSAL - **AND MUST BE ATTACHED IN THAT ORDER!**

MINIMUM SPECIFICATIONS FOR CHEMICAL WARM MIX AND COMPACTION AID
ADDITIVE

1. Low Viscosity Water-Free Surfactant liquid form
2. Proven performance history with Wisconsin aggregates
3. Production temperature of 250 degrees F or less
4. Placement temperature of 235 degrees F or less
5. Compaction temperature range down to 150 degrees
6. Product must appear on the WisDOT's approved products list for warm mix additives
7. Additive is post added via pump system at Wood County Hot Mix Plant
8. Proven history of successful performance and compatibility with Wood County aggregate source
9. Additive shall be capable of producing Tensile Strength Ratio (ASTM D4827, WisDOT) 80% or higher at manufacturers recommended dosage rate
10. Product delivery of material will be 1 or 2 totes at a time upon request by Wood County
11. Empty totes must be picked up and removed by provider
12. Bid is for approximately 18 tons of material, more or less.

PROPOSAL FORM

May 2, 2018

TO: Wood County Highway Infrastructure and Recreation Committee
555 - 17th Avenue North
Wisconsin Rapids, WI 54495-1966

We, the undersigned, propose to furnish to the Wood County Highway Commission, Wisconsin Rapids, WI, the following as herein specified by us in accordance with the NOTICE OF BIDS, BIDDING INSTRUCTIONS, and SPECIFICATIONS hereto attached:

Chemical Warm Mix and Compaction Aid additive per ton: \$_____.

By submission of this bid, we understand that unless otherwise specified in the bid requirements, all materials will be ordered on an "as needed" basis by the Wood County Highway Department.

COMPANY NAME OF BIDDER _____

REPRESENTATIVE _____

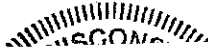
TITLE _____

ADDRESS _____

PHONE NO. / CELL _____

E-MAIL _____

PROJECT 2018-72-01
HEMLOCK CREEK BRIDGE B-71-0198
(CTH N – SPRUCE RD.)
CTH E
WOOD COUNTY, WISCONSIN



May
HRL

PREPARED BY:

Wood County Highway
Department
555 17th Avenue North
Wisconsin Rapids, WI
54495
Office: (715) 421-8875
Fax: (715) 421-8874

DESIGNED BY

Mead & Hunt
1702 Lawrence Drive
De Pere, WI 54115
Office: (920) 496-0500

Table of Contents

Article	Description	Page #
	ADVERTISEMENT FOR BIDS	4
	INSTRUCTIONS TO BIDDERS	5
	PROPOSAL REQUIREMENTS AND CONDITIONS	6
	PROPOSAL FOR ROAD CONSTRUCTION	7
	PAYMENT BOND (sample).....	8
	PERFORMANCE BOND (sample).....	9
	CONTRACT FOR ROAD CONSTRUCTION	10
1.	DESCRIPTION OF THE WORK.....	10
2.	PRELIMINARY SUBMITTALS; NOTICE TO PROCEED.	10
3.	PERFORMANCE; SAFETY.....	10
4.	CONTRACT TIME & COMPLETION DATE.	11
5.	PAYMENT FOR THE WORK.....	11
6.	LIQUIDATED DAMAGES	11
7.	DELAY.	11
8.	SUSPENSION OF THE WORK.....	11
9.	CHANGES IN WORK.....	11
10.	TERMINATION FOR DEFAULT.....	11
11.	TERMINATION FOR CONVENIENCE.....	12
12.	N/A.....	12
13.	QUALIFICATIONS.....	12
14.	N/A.....	12
15.	N/A.....	12
16.	N/A.....	12
17.	REMOVAL OF EMPLOYEES.	12
18.	LIST OF PARTIES EXCLUDED.	12
19.	INSURANCE.....	12
20.	BONDING.....	13
21.	EXCLUSION OF CONSEQUENTIAL DAMAGES.	13
22.	WARRANTY.....	13
23.	RECORDS, MONITORING AND REPORTING.....	13
24.	N/A.....	13
25.	N/A.....	13
26.	COMPLIANCE WITH LOCAL, STATE AND FEDERAL LAW.	14
27.	DISPUTES.	14
28.	NOTICE.	14
29.	RELATIONSHIP OF PARTIES.....	14
30.	N/A.....	14
31.	INDEMNIFICATION.....	14
32.	N/A.....	15

33. N/A	15	
34.	CHOICE OF LAW	15
35.	N/A.....	15
36.	N/A.....	15
37.	SUCCESSORS AND ASSIGNMENTS.....	15
38.	FORCE MAJEURE.	15
39.	SEVERABILITY.....	15
40.	AUTHORITY.	15
41.	ENTIRE AGREEMENT; AMENDMENT.	15
42.	COUNTERPARTS.	16
	NOTICE OF AWARD.....	17
	CHANGE ORDER	18
	NOTICE TO PROCEED	19
	LIST OF SUBCONTRACTORS.....	20
	SCHEDULE OF PRICES	21
	SPECIAL PROVISIONS.....	25
1.	General.....	25
2.	Scope of Work	25
3.	Prosecution and Progress	25
4.	Traffic.	26
5.	Schedule.....	26
6.	Liquidated Damages.	26
7.	Utilities.....	26
8.	Information to Bidders, Wisconsin DNR General Permit.	27
9.	Environmental Protection, Dewatering.....	27
10.	Environmental Protection, Aquatic Exotic Species Control.....	27
11.	Construction Over or Adjacent to Navigable Waters.	28
12.	Erosion Control Structures.....	28
13.	Removing Old Structure Over Waterway With Minimal Debris Station 10+00, Item 203.0600.S.	29
14.	QMP Base Aggregate.	30

ADVERTISEMENT FOR BIDS

PROJECT 2018-72-01 **HEMLOCK CREEK BRIDGE B-71-0198** **(CTH N - SPRUCE RD.)** **CTH E** **WOOD COUNTY, WISCONSIN**

Plans and Specifications for the Wood County Highway E Bridge Project are available in the office of the Wood County Highway Department, 555 17th Avenue North, Wisconsin Rapids, WI 54495 for a nonrefundable fee of \$20.00 per set or \$10.00 for a CD with PDF files, or bidders may obtain a copy from the Wood County web site <http://www.co.wood.wi.us/Departments/Highway/>.

PREQUALIFICATION OF BIDDERS

BIDDER may be asked to submit evidence of BIDDER's qualifications to do this type of work in the state of Wisconsin prior to the award of the contract. Bids will not be accepted from any BIDDER listed on the State of Wisconsin Disapproved, Suspended, and Debarred Contractors list or the Federal Excluded Parties List.

SUBMITTAL OF BIDS

Bidders shall submit bids in a separate sealed envelope for the contract to the Wood County Highway Department, 555 17th Avenue, Wisconsin Rapids, Wisconsin 54495. Bids will be received during regular office hours until 10:00 AM local time, Wednesday, April 18, 2018.

The bids will be opened following the closing of the bidding at 10:00 AM local time, Wednesday, April 18, 2018 at Wood County Highway Department, 555 17th Avenue, Wisconsin Rapids, Wisconsin 54495.

PROPOSAL AND CONTRACT AGREEMENTS

No bid shall be considered unless accompanied by the Proposal Agreement fully executed by the bidder. The bidder that is awarded the contract agrees to execute the contract agreement within five (5) days after the Notice of Award, begin work no later than five (5) days after written Notice to Proceed, and complete all work included under the terms of the contract in the allotted time.

By order of the Wood County Highway Department
Mr. Doug Passineau, Commissioner
555 17th Avenue North
Wisconsin Rapids, WI 54495

INSTRUCTIONS TO BIDDERS

PROJECT 2018-72-01
HEMLOCK CREEK BRIDGE B-71-0198
(CTH N - SPRUCE RD.)
CTH E
WOOD COUNTY, WISCONSIN

PREPARATION OF BID

Each bid must be submitted on the prescribed form to be considered. All blank spaces for bid prices on the "Schedule of Prices" sheets must be completed, in ink or typewritten, where provided. In case of any discrepancy between the "unit bid price" and the "amount bid", the "unit bid price" shall govern.

The full name and business address of each bidder must be entered on the proposal submitted. The proposal shall be signed in the space provided by written signature of the person or persons properly authorized to sign it. All signatures shall be properly notarized in the space provided.

All proposals containing bids and required bidding documents shall be placed in a sealed envelope addressed to: Wood County Highway Department, 555 17th Avenue, Wisconsin Rapids, Wisconsin 54495, with the bidder's name and address, project and date of the bid opening plainly written on the envelope containing the bid.

A Bid Bond in the amount of 5% of the contract is required for this project and shall be submitted with the Contract Proposal.

Sealed bids for the contract will be received by the Wood County Highway Department until 10:00 AM local time, Wednesday, April 18, 2018, at the Wood County Highway Department, 555 17th Avenue, Wisconsin Rapids, Wisconsin 54495, at which time all bids will be closed and publicly opened and read aloud.

The bidder that is awarded the contract agrees to execute the Contract Agreement and shall also agree to perform all work under the terms of this contract in the allotted time. The successful bidder will be required to provide a performance and payment bond equal to 100% of the project costs at the time of Contract Agreement execution.

Any questions may be directed to the Engineer: Mr. Roland Hawk, P.E., Wood County Highway, (715) 421-8875.

Wood County reserves the right to reject any and all bids or accept the lowest responsible bid that it deems to be in the best interest of Wood County.

PROPOSAL REQUIREMENTS AND CONDITIONS

PROJECT 2018-72-01
HEMLOCK CREEK BRIDGE B-71-0198
(CTH N - SPRUCE RD.)
CTH E
WOOD COUNTY, WISCONSIN

The bidder, signing and submitting this proposal, agrees and declares as a condition thereof, to be bound by the following conditions and requirements.

The bidder declares that he has carefully examined the site of, and the proposal, plans, specifications and contract forms for the work contemplated, and it is assumed that the bidder has investigated and is satisfied as to the conditions to be encountered, as to the character, quality, and quantities of work to be performed and materials to be furnished, and as to the requirements of the specifications and contract. It is mutually agreed that submission of a proposal shall be considered conclusive evidence that the bidder has made such examination.

The bidder declares that he understands that the estimate of quantities in the attached schedule is approximate only and that the attached quantities may be greater or less in accordance with the specifications.

The bidder agrees to perform the said work, for and in consideration of the payment of the amount becoming due on account of work performed, according to the unit prices bid in the attached schedule, and to accept such amounts in full payment of said work.

The bidder declares that all of the said work will be performed at his own proper cost and expense, that he will furnish all necessary materials, labor, tools, machinery, apparatus, and other means of construction in the manner provided in the applicable specifications and the approved plans for the work together with all standard and special designs that may be designated on such plans, and the general conditions in the contract of which this proposal will become a part, if and when accepted. The bidder further agrees that the applicable specifications and all plans and working drawings are made a part hereof, as fully and completely as if attached hereto.

The bidder, if awarded the contract, agrees to begin the work not later than five (5) days after the date of written notification from the owner to do so.

The bidder declares that if he is awarded the contract, he will execute the contract agreement and begin and complete the work within the time named herein. The bidder, if awarded the contract, shall further be responsible for any damages to property or injury to persons occurring through his own negligence or that of his employees or agents, incident to the performance of work under this contract.

PROPOSAL FOR ROAD CONSTRUCTION

**PROJECT 2018-72-01
HEMLOCK CREEK BRIDGE B-71-0198
(CTH N - SPRUCE RD.)
CTH E
WOOD COUNTY, WISCONSIN**

This Proposal, submitted by the undersigned bidder to Wood County, in accordance with the advertisement inviting proposals, which will be received until 10:00 AM, Wednesday, April 18, 2018, local time, all work for the improvement of the project designated, "PROJECT 2018-72-01, HEMLOCK CREEK BRIDGE B-71-0198, (CTH N - SPRUCE RD.), CTH E, WOOD COUNTY, WISCONSIN," in accordance with the appended Proposal Requirements and Conditions.

AFFIDAVIT:
STATE OF Wisconsin
COUNTY OF _____

The undersigned bidder, being duly sworn, does depose and say that he is an authorized representative of _____

____Sole Trader ____Partnership ____Joint Venture ____Corporation

and that the said bidder has examined and carefully prepared his bid from the plans and specifications and has checked the same in detail before submitting said proposal or bid; and that the said bidder or his agents, officer, or employees have not, either directly/indirectly, entered into any agreement, participated in any collusion, or otherwise taken any action in restraint of free competitive bidding in connection with this proposal or bid.

BIDDER MUST SIGN ON THIS LINE Title _____

Type/Print Signature on this Line

Subscribed and sworn to before me this day.

Date County

Notary Public

My Commission expires _____.

PAYMENT BOND (sample)

Any singular reference to the Contractor, Surety, Owner or other party shall be considered plural where applicable.

CONTRACTOR (Name and Address):

SURETY (Name and Principal Place of Business):

OWNER (Name and Address):

CONTRACT

Date:

Amount:

Description (Name and Location):

BOND

Date (Not earlier than Construction Contract Date):

Amount:

Modifications to this Bond Form:

Surety and Contractor, intending to be legally bound hereby, subject to the terms printed on the reverse side hereof, do each cause this Payment Bond to be duly executed on its behalf by its authorized officer, agent, or representative.

CONTRACTOR AS PRINCIPAL

Company: _____ (Corp. Seal)

Signature: _____

Name and Title: _____

SURETY

Company: _____ (Corp. Seal)

Signature: _____

Name and Title: _____

(Attach Power of Attorney)

CONTRACTOR AS PRINCIPAL

Company: _____ (Corp. Seal)

Signature: _____

Name and Title: _____

SURETY

Company: _____ (Corp. Seal)

Signature: _____

Name and Title: _____

PERFORMANCE BOND (sample)

Any singular reference to the Contractor, Surety, Owner or other party shall be considered plural where applicable.

CONTRACTOR (Name and Address):

SURETY (Name and Principal Place of Business):

OWNER (Name and Address):

CONTRACT

Date:

Amount:

Description (Name and Location):

BOND

Date (Not earlier than Construction Contract Date):

Amount:

Modifications to this Bond Form:

Surety and Contractor, intending to be legally bound hereby, subject to the terms printed on the reverse side hereof, do each cause this Performance Bond to be duly executed on its behalf by its authorized officer, agent, or representative.

CONTRACTOR AS PRINCIPAL

Company: (Corp. Seal)

Signature: _____

Name and Title:

SURETY

Company: (Corp. Seal)

Signature: _____

Name and Title:

(Attach Power of Attorney)

CONTRACTOR AS PRINCIPAL

Company: (Corp. Seal)

Signature: _____

Name and Title:

SURETY

Company: (Corp. Seal)

Signature: _____

Name and Title:

CONTRACT FOR ROAD CONSTRUCTION

PROJECT 2018-72-01
HEMLOCK CREEK BRIDGE B-71-0198
(CTH N - SPRUCE RD.)
CTH E
WOOD COUNTY, WISCONSIN

THIS AGREEMENT (the "Contract") is made effective as of this ____ day of _____, 2018, by and between the Wood County Highway Department ("Client") and _____ ("Contractor") for the construction of road and bridge project activities on Wood County Highway E (Project ID No. 2018-72-01).

NOW, THEREFORE, the parties agree as follows:

1. DESCRIPTION OF THE WORK.

Work under this contract shall consist of remove existing structure over Hemlock Creek, remove approach pavement as described in special provisions, construct a new single span flat slab bridge per plan, construct new roadway slopes, shoulders, beam guard, base aggregate, perform all necessary erosion control, and roadway finishing items per plan, and all incidental items necessary to complete the work as shown on the plans and included in the proposal and contract.

2. PRELIMINARY SUBMITTALS; NOTICE TO PROCEED.

Prior to the commencement of any work hereunder and the issuance of the Notice to Proceed, Contractor shall prepare and submit to Client such schedules, plans and other documents as may be needed by Client in order to satisfy its obligations under the Contract, including but not limited to a progress schedule, safety plan, accident prevention plan and subcontractor plan.

3. PERFORMANCE; SAFETY.

Contractor shall perform the Work in a diligent, efficient and skillful manner. Contractor's Work shall not interfere with, hinder or delay other work on the Project. In the event Contractor delays the progress of any other work on the Project, Contractor shall take prompt corrective action, without additional compensation, and shall be liable to and reimburse Client for all damages resulting from such delay. Contractor shall be solely responsible for protection of its Work and for loss or damage to materials, tools, equipment, or other property, owned, rented or used by Contractor in performance of the Work. If performance of the Work depends upon performance of other work, Contractor shall carefully examine all related work, determine whether it is suitable for performance of the Work, report immediately any unsuitable conditions to Client in writing, and allow Client reasonable time to have such unsuitable conditions remedied. Unless Contractor reports such unsuitable conditions, Contractor shall be deemed to have accepted related work as adequate for completion of the Work. Contractor shall carry out the Work in a safe manner, and shall comply with all safety measures initiated by Contractor or required by the Contract, and all applicable laws, codes, ordinances, rules, regulations and orders of any public authority for the safety of persons or property. Contractor shall be solely responsible for protection of the safety of its employees.

4. CONTRACT TIME & COMPLETION DATE.

The contract time for this project is 35 Working Days, construction may begin on June 1, 2018. The Work shall be completed by 5:00 PM, FRIDAY, August 24, 2018. Time is of the essence for the performance of the Work.

5. PAYMENT FOR THE WORK.

In exchange for the Contractor's performance of the Work, Client will pay Contractor the total firm-fixed price amount of \$_____.

All funds are subject to availability from the Client. Final payment will be issued only upon satisfactory completion of the Work and all other obligations due under this Contract. Client will have no liability for payment for any work performed by Contractor that is not covered in this Contract or that is not approved in writing by Client. Notwithstanding any other provisions of this Contract, failure of Contractor to submit required or necessary reports when due, failure to perform the Work as and when required, will result in withholding of payments under this Contract.

6. LIQUIDATED DAMAGES

Contractor shall pay Client \$500.00 for each day that expires after 5:00 PM, August 24, 2018 that the bridge over Hemlock Creek on CTH E is not open to traffic. Contractor shall construct the Base Aggregate Dense 1 1/4 -Inch in accordance with the Standard Specifications and to the width, elevation and section as shown on the plans, then provide two (2) working days for Wood County Highway to pave asphalt approaches. Contractor must account for this time in their schedule.

7. DELAY.

In the event that Contractor's Work is delayed for any reason, including suspension by Client, Contractor's sole remedy shall be an extension of time equal to the period of delay. Contractor shall not be entitled to any extension for delays attributable to its own acts or omissions or occurrences under its control.

8. SUSPENSION OF THE WORK.

Client shall have the same right to suspend the performance of the Work, or any portion thereof, under the Contract, and Contractor's right to compensation shall also be governed thereby.

9. CHANGES IN WORK.

Client shall have the right to make changes in the Work in writing, and Contractor shall perform the Work as changed, subject to an equitable adjustment in price and/or time for performance, if applicable, provided Contractor provides written notice of such request for equitable adjustment within ten (10) days of receipt of the change. Contractor shall make no changes in the Work without written direction from Client, and Contractor shall not be compensated for any change made without such written direction.

10. TERMINATION FOR DEFAULT.

In the event Contractor fails to comply with any of its obligations hereunder or fails to prosecute or properly perform the Work to Client's reasonable satisfaction, and Contractor further fails to take corrective action satisfactory to Client within three (3) working days from receipt of Client's written notice specifying the deficiency in Contractor's performance, Client shall have the right to terminate the Work, or any portion thereof, for cause and take whatever steps it deems necessary to correct said failure and charge the full cost of corrective action to Contractor (including reasonable overhead, profit and attorneys' fees).

11. TERMINATION FOR CONVENIENCE.

Client shall have the right at any time and for any reason to terminate the Work, or any portion of the Work, for its convenience. In the event of termination for convenience by Client, Client's liability to Contractor shall be limited to payment of amounts recoverable under the Termination for Convenience clause of the Contract.

12. N/A

13. QUALIFICATIONS.

Contractor shall ensure that personnel selected to perform or manage the Work are qualified in accordance with generally accepted professional standards of the industry. Architects, engineers, surveyors and other related design and construction professionals and related trade and craft practitioners shall be licensed under applicable law or work under the direction of licensed engineers, architects and surveyors, and meet appropriate qualifications and experience requirements for the type of work involved.

14. N/A

15. N/A

16. N/A

17. REMOVAL OF EMPLOYEES.

Contractor shall remove from the Work at the project site any employee thereof whom the Client, in writing, finds to be incompetent, careless or otherwise objectionable.

18. LIST OF PARTIES EXCLUDED.

Contractor is ineligible for the award of this Contract if Contractor is listed State of Wisconsin Disapproved, Suspended, and Debarred Contractors list or the Federal Excluded Parties List, Contractor shall provide Contractor with "Certification Regarding Debarment, Suspension, Proposed Debarment, and Other Responsibility Matters." In the event of Contractor's noncompliance with the requirements hereunder, Contractor may take appropriate action, including, but not limited to termination of this Contract.

19. INSURANCE.

All prime contractors shall provide a Certificate of Insurance on forms acceptable to the Client. All Subcontractors shall provide and carry at a minimum, the insurance coverage and limits as indicated in the General Conditions or as required by the Contractor, whichever is higher. This shall be submitted to the Client before a Contract is signed.

The Client (Wood County) shall be named as additional insured on the Certificates of Insurance. General liability insurance shall cover property damage to existing buried utilities. Contractor shall secure, pay premiums for, and keep in force until the expiration of the Contract, or any renewal thereof, the following insurance: (1) Worker's Compensation Insurance, as required by the laws of the State of Wisconsin; (2) Owner's landlord's and tenant's bodily injury liability insurance with limits of not less than \$1,000,000 for each person, and \$5,000,000 for each accident; (3) Property Damage Liability Insurance with limits of not less than \$500,000 for each accident and a total limit of \$1,000,000 for damages arising out of bodily injuries to or death of two persons in any one accident. Other insurance not specifically mentioned herein when required by law or other regulations. Each insurance company of Contractor must hold a current Certificate of Authority issued by the Director of the State Department of Insurance authorizing it to transact the appropriate kind of insurance business in State. To be acceptable, the policy of

insurance must contain a provision committing the insurer to pay for covered acts and omissions regardless of the fact that the same acts or omissions by Contractor, its agents and employees may be covered under the Federal Tort Claims Act. Each policy of insurance shall contain an endorsement providing that cancellation by the insurance company shall not be effective unless a copy of the cancellation is mailed (registered) to the appropriate official of Contractor at least 30 days before the effective date of the cancellation notice received, immediately upon receipt. A certificate of each policy of insurance and any changes therein, shall be furnished to Client immediately upon receipt from the insurance company. Insurance companies of Contractor must be satisfactory to the Client. When in Client's opinion an insurance company is not satisfactory for reasons stated in writing, Client may recommend Contractor obtain insurance through companies, which Client deems satisfactory.

20. BONDING.

Contractor shall provide a bid bond of 5% when bids are submitted, and performance and payment bonds equal to 100% of the amount of the Contract at the time of Contract execution. Bonds are to be made payable to Client. Corporate sureties offered for bonds furnished with this Contract must be original documents and must appear on the list contained in the Department of Treasury Circular 570, entitled "Companies Holding Certificates of Authority as Acceptable Sureties on Federal Bonds and Acceptable Reinsuring Companies".

21. EXCLUSION OF CONSEQUENTIAL DAMAGES.

Notwithstanding any other provision of the Contract, Client shall not have any liability hereunder for incidental, consequential, special or punitive damages, including but not limited to lost profits, loss of good will, or business interruption, even if Client has been advised of the possible existence of such damages.

22. WARRANTY.

Contractor warrants the Work is free of deficiencies and defects in materials and/or workmanship and that the Work conforms in all respects to the requirements of this Contract, and any other applicable contract documents. Contractor agrees to satisfy such warranty obligations without cost to Client.

23. RECORDS, MONITORING AND REPORTING.

Contractor shall maintain a record keeping system and, upon reasonable advance request, provide reasonable access to such records by Client. At a minimum, such records shall include completed daily reports of construction activities appropriate to the type of construction being performed. Contractor shall be responsible for managing the day-to-day operations conducted under this Contract and for monitoring activities conducted to ensure compliance with the Contract and applicable State and Federal requirements. With respect to the monitoring activities of Contractor, the monitoring visits/inspections shall include those jointly determined to be necessary to ensure compliance with the Contract, including structural integrity of the project and compliance with safety, health, and environmental standards or requirements. Prior to beginning of construction, Client and Contractor will agree upon the process for monitoring the project activities. Contractor shall maintain on the job-site or project office, and make available to Client during monitoring visits, contracts, subcontracts, modifications, construction documents, change orders, shop drawings, equipment cut sheets, inspection reports, testing reports, and current redline drawings.

24. N/A

25. N/A

26. COMPLIANCE WITH LOCAL, STATE AND FEDERAL LAW.

In the performance of the Work, Contractor shall give all notices and comply with all applicable local, state and federal laws, executive orders and regulations. Unless otherwise exempt, the following clauses are incorporated by reference: Equal Opportunity Clause, 41 CFR § 60 1.4; Disabled Veterans and Veterans of the Vietnam Era, 41 CFR § 60 250.5; Individuals with Disabilities, 41 CFR § 60 741.5. In addition, unless exempt, Contractor shall comply with all affirmative action requirements and any other requirements set forth in 41 CFR Chapter 60 and all applicable Executive Orders pertaining to equal opportunity. Contractor also agrees to comply with Executive Order 13201 and its implementing regulation at 29 CFR Part 470.

27. DISPUTES.

With respect to any dispute or claim hereunder, Contractor agrees to be bound to Client by a final decision of a Contracting Officer, board of contract appeals or other court whether or not Contractor is a party to such proceedings. Contractor agrees to assert any claim it may have relating to the Contract through Client and to allow adequate time for the exhaustion of all remedies under the Contract. Provided Contractor's claim is not barred by the foregoing provisions, such claim shall be resolved pursuant to the Choice of Law provision below.

28. NOTICE.

Any notice or communication required or permitted under this Contract shall be sufficiently given if delivered in person or by certified mail, return receipt requested, to the primary business address of the other party or to such other address as a party may have furnished to the other in writing.

29. RELATIONSHIP OF PARTIES.

The parties to this Contract agree that Contractor is an independent business/person or corporation, and that the relationship created by this Contract is that of Independent Contractor. No agent, employee, or servant of Contractor shall be or shall be deemed to be the employee, agent or servant of Client. Contractor is not authorized to bind Client to any agreement or act on behalf of Client in anyway; other than to perform the Work, and shall not represent to any person or otherwise purport to be so authorized.

30. N/A

31. INDEMNIFICATION.

Contractor shall indemnify and hold Client harmless from any claims, actions, and liabilities, including but not limited to attorneys' fees and costs, arising from any breach of this Contract by Contractor, or otherwise arising out of or relating to Contractor's performance of the Work, except to the extent caused by the wrongful act or gross negligence of an employee or other agent of Client.

32. N/A

33. N/A

34. CHOICE OF LAW.

This Contract shall be construed under the laws of the Wood County in the State of Wisconsin. The Parties agree, for any claim or suit or other dispute relating to this Agreement that cannot be mutually resolved, the venue shall be in the Circuit Court of Wood County, and the parties further agree to submit themselves to the jurisdiction of said court, to the exclusion of any other judicial district that may have jurisdiction over such a dispute according to any law. The undersigned does hereby consent to the subject matter and personal jurisdiction of said Court over any such dispute arising pursuant to this Contract and any and all subsequent changes, additions, appendixes, addenda or any other amendment to this Contract, without regard to conflicts of laws.

35. N/A

36. N/A

37. SUCCESSORS AND ASSIGNMENTS.

The benefits and obligations of this Contract shall transfer and be binding upon the parties and their respective successors and permitted assigns, provided that Contractor shall not assign or transfer its interest in this Contract without prior written approval of Client. Client shall have the right to assign its interests in this Contract.

38. FORCE MAJEURE.

The parties shall not be liable for delay in performance hereunder to the extent such delay results from causes beyond the party's reasonable control, or from strikes, lockouts, war, fires, unusually severe weather, delays of common carriers, acts of God, or detrimental governmental actions.

39. SEVERABILITY.

If any provision of this Contract is invalid or unenforceable under any statute or rule of law within the appropriate jurisdiction, the provision is to that extent to be deemed omitted and the remaining provisions shall not be affected in any way.

40. AUTHORITY.

Each party represents and warrants that it has the full right, power and authority to enter into this Contract and to effectuate the purpose and intent hereof. Each party further represents and warrants, respectively, that it is aware of no obligation or disability that would prevent it from entering into this Contract and fully performing all of its obligations hereunder.

41. ENTIRE AGREEMENT; AMENDMENT.

This Contract, and the provisions and clauses incorporated herein by reference, contain the entire agreement and understanding between Client and Contractor relating to the subject matter herein, and supersedes any other agreement or understanding, whether written or oral, relating to this Contract. No amendment, waiver or discharge of these terms will be valid unless in writing and signed by both parties.

42. COUNTERPARTS.

This Contract may be signed in one or more counterparts. A facsimile or electronic copy of a signature shall be binding.

IN WITNESS WHEREOF, the parties execute this Contract below.

WOOD COUNTY HIGHWAY

CONTRACTOR

Sign: _____

Sign: _____

Print: _____

Print: _____

Title: _____

Title: _____

Date: _____

Date: _____

NOTICE OF AWARD

PROJECT 2018-72-01
HEMLOCK CREEK BRIDGE B-71-0198
(CTH N - SPRUCE RD.)
CTH E
WOOD COUNTY, WISCONSIN

Dated: _____

To: _____

To Whom It May Concern:

You are notified that your Bid Proposal dated April 18, 2018, for the above Contract has been considered. You are the apparent successful bidder and have been awarded a contract for the "PROJECT 2018-72-01, HEMLOCK CREEK BRIDGE B-71-0198, (CTH N - SPRUCE RD.), CTH E, WOOD COUNTY, WISCONSIN" project.

The Contract Price of your contract is \$_____.

Three copies of each of the proposed Contract Documents, including the Plans, will be forwarded from Wood County Highway following this Notice of Award.

You must comply with the following conditions precedent within five (5) days of the date of this Notice of Award, that is by: _____.

1. You must deliver to the Owner three fully executed counterparts of the Agreement, including all the Contract Documents. Each of the Contract Documents must bear your signature on the Agreement Form.

Include Certificate of Insurance naming Wood County as additional insured.

2. You agree to complete work and have CTH E open to traffic within 35 working days from construction start date and on or before 5:00 PM Friday, August 24, 2018.

Failure to comply with these conditions within the time specified will entitle the Owner to consider your bid abandoned, and to annul this Notice of Award.

Within ten days after you comply with those conditions, the Owner will return to you one fully signed counter part of the Agreement with the Contract Documents attached.

CHANGE ORDER

PROJECT 2018-72-01
HEMLOCK CREEK BRIDGE B-71-0198
(CTH N - SPRUCE RD.)
CTH E
WOOD COUNTY, WISCONSIN

ORDER NO.: _____
DATE: _____
AGREEMENT DATE: _____

OWNER: Wood County
555 17th Avenue North
Wisconsin Rapids, WI 54495

CONTRACTOR: _____

The following changes are hereby made to the CONTRACT DOCUMENTS:
Justification:

Change to CONTRACT PRICE:

Original CONTRACT PRICE \$ _____

Current CONTRACT PRICE adjusted by previous CHANGE ORDER \$ _____

The CONTRACT PRICE due to this CHANGE ORDER will be (increased) (decreased) by \$ _____

The new CONTRACT PRICE including this CHANGE ORDER will be \$ _____

Change to CONTRACT TIME:

The CONTRACT TIME will be (increased)(decreased) by _____ calendar days.

The date for completion of all work will be _____ (date).

Approvals Required:

To be effective this Order must be approved by the owner, Wood County, if it changes the scope or objective of the PROJECT, or as may otherwise be required by the SUPPLEMENTAL SPECIAL PROVISIONS.

Requested By: _____

Recommended By: _____

Ordered By: _____

Accepted By: _____

NOTICE TO PROCEED

PROJECT 2018-72-01
HEMLOCK CREEK BRIDGE B-71-0198
(CTH N - SPRUCE RD.)
CTH E
WOOD COUNTY, WISCONSIN

Dated: _____

To: _____
(Contractor)

You are notified that the Contract Times under the above contract will commence to run on _____. By that date, you are to start performing your obligations under the Contract Documents.

Before you may start any work at the site, the Special Conditions provides that you and the Owner must each deliver to the other (with copies to ENGINEER and other identified additional insured) certificates of insurance which each is required to purchase and maintain in accordance with the Contract Documents.

Also before you may start any Work at the site, you must _____ (add other requirements)

1. Notify Wood County 48 hours before starting work.
2. Contact Digger's Hotline for utility locate.
3. Pre-Construction Meeting to be held prior to beginning construction.

BY: Wood County
(Owner)

(Authorized Signature)

Highway Commissioner
(Title)

LIST OF SUBCONTRACTORS

PROJECT 2018-72-01
HEMLOCK CREEK BRIDGE B-71-0198
(CTH N - SPRUCE RD.)
CTH E
WOOD COUNTY, WISCONSIN

Section 66.29(7), Wisconsin Statutes (Chapter 559, Laws of 1959), provides for a bidder, as a part of his proposal, to submit a list of the subcontractors he proposes to contract with and the class work to be performed by each, provided that to qualify for such listing each subcontractor must first submit his bid in writing to the general contractor at least 48 hours prior to the time of bid closing. It further provides that a proposal of a bidder shall be invalid if any subcontractor and the class of work to be performed by such subcontractor has been omitted from a proposal.

Submit Federal Standard Form 1413 as part of the bid package.

No subcontract, whether listed herein or later proposed, may be entered into without the written consent of Wood County.

<u>NAME OF SUBCONTRACTOR</u>	<u>CLASS OF WORK</u>	<u>ESTIMATED VALUE</u>

SCHEDULE OF PRICES

PROJECT 2018-72-01
HEMLOCK CREEK BRIDGE B-71-0198
(CTH N - SPRUCE RD.)
CTH E
WOOD COUNTY, WISCONSIN

NOTE: BIDDER MUST FILL IN SCHEDULE OF
PRICES FOR ALL ITEMS OF WORK, NO. OF
WORKING DAYS, AND EQUIPMENT TO BE
USED TO COMPLETE WORK.

CTH E BRIDGE						Unit Price		Total Cost	
Group	Item	Unit	Item Description	Supplemental Description	Quantity	DOLLARS	CENTS	DOLLARS	CENTS
ROADWAY ITEMS									
10	201.0105	STA	CLEARING		2				
10	201.0205	STA	GRUBBING		2				
10	205.0100	CY	EXCAVATION COMMON		506				
10	208.0100	CY	BORROW		177				
10	305.0110	TON	BASE AGGREGATE DENSE ¾-INCH		75				
10	305.0120	TON	BASE AGGREGATE DENSE 1-1/4-INCH		1,350				
10	606.0300	CY	RIPRAP HEAVY		25				
10	614.2300	LF	MGS GUARDRAIL 3		50				
10	614.2330	LF	MGS GUARDRAIL 3K		50				
10	614.2500	LF	MGS THRIE BEAM TRANSITION		158				
10	614.2610	EACH	MGS GUARDRAIL TERMINAL EAT		4				
10	619.1000	EACH	MOBILIZATION		1				
10	624.0100	MGAL	WATER		8				
10	625.0500	SY	SALVAGED TOPSOIL		770				
10	628.1504	LF	SILT FENCE		890				
10	628.1520	LF	SILT FENCE MAINTENANCE		1,780				
10	628.1905	EACH	MOBILIZATIONS EROSION CONTROL		4				
10	628.1910	EACH	MOBILIZATIONS EMERGENCY EROSION CONTROL		2				
10	628.2008	SY	EROSION MAT URBAN CLASS I TYPE B		1,270				
10	628.6005	SY	TURBIDITY BARRIERS		230				
10	628.7504	LF	TEMPORARY DITCH CHECKS		30				
10	629.0210	CWT	FERTILIZER TYPE B		1.6				
10	630.0120	LB	SEEDING MIXTURE NO. 20		70				

10	630.0200	LB	SEEDING TEMPORARY		36				
10	634.0614	EACH	POSTS WOOD 4X6- 14 FT		4				
10	637.2230	SF	SIGNS TYPE II REFLECTIVE F		12				
10	638.2602	EACH	REMOVING SIGNS TYPE II		6				
10	638.3000	EACH	REMOVING SMALL SIGN SUPPORTS		6				
10	642.5001	EACH	FIELD OFFICE TYPE B		1				
10	643.0420	DAY	TRAFFIC CONTROL BARRICADES TYPE III		976				
10	643.0705	DAY	TRAFFIC CONTROL WARNING LIGHTS TYPE A		476				
10	643.0900	DAY	TRAFFIC CONTROL SIGNS		732				
10	645.0120	SY	GEOTEXTILE FABRIC TYPE HR		60				
10	646.1020	LF	MARKING LINE EPOXY 4-INCH		1,075				
10	650.4500	LF	CONSTRUCTION STAKING SUBGRADE		438				
10	650.5000	LF	CONSTRUCTION STAKING BASE		438				
10	650.6500	LS	CONSTRUCTION STAKING STRUCTURE LAYOUT (B-71- 0198)	01. B-71-0198	1				
10	650.9910	LS	CONSTRUCTION STAKING SUPPLEMENTAL CONTROL (PROJECT 2018-72-01)	01. 2018-72- 01	1				
10	650.9920	LF	CONSTRUCTION STAKING SLOPE STAKES		438				
10	690.0150	LF	SAWING ASPHALT		44				
BRIDGE ITEMS									
20	203.0600.S	LS	REMOVING OLD STRUCTURE OVER WATERWAY WITH MINIMAL DEBRIS (STA 10+00)	01. 10+00	1				

20	206.1000	LS	EXCAVATION FOR STRUCTURES BRIDGES (B-71- 0198)	01. B-71-0198	1				
20	210.1500	TON	BACKFILL STRUCTURE TYPE A		323				
20	502.0100	CY	CONCRETE MASONRY BRIDGES		150				
20	502.3200	SY	PROTECTIVE SURFACE TREATMENT		170				
20	505.0400	LB	BAR STEEL REINFORCEMENT HS STRUCTURES		4,080				
20	505.0600	LB	BAR STEEL REINFORCEMENT HS COATED STRUCTURES		19,990				
20	513.4061	LF	RAILING TUBULAR TYPE M (B-71-0198)	01. B-71-0198	120				
20	516.0500	SY	RUBBERIZED MEMBRANE WATERPROOFING		20				
20	550.2104	LF	PILING CIP CONCRETE 10 ¾ X 0.25-INCH		300				
20	606.0300	CY	RIPRAP HEAVY		145				
20	612.0406	LF	PIPE UNDERDRAIN WRAPPED 6-INCH		160				
20	645.0111	SY	GEOTEXTILE FABRIC DF SCHEDULE A		88				
20	645.0120	SY	GEOTEXTILE TYPE HR		325				

TOTAL

X

Authorized Contractor Signature

SPECIAL PROVISIONS

1. General

Perform the work under this construction contract for Project 2018-72-01, HEMLOCK CREEK BRIDGE B-71-0198, (CTH N - SPRUCE RD.), Wood County, Wisconsin as the plans show and execute the work as specified in the State of Wisconsin, Department of Transportation, Standard Specifications for Highway and Structure Construction, 2018 Edition, as published by the department, and these special provisions.

2. Scope of Work

Work under this contract shall consist of Removal of Structure P-71-127, Structure B-71-0198, Common Excavation, Borrow, Base Aggregate Dense, Permanent Signing, Pavement Marking and all incidental items necessary to complete the work as shown in the plans and included in the proposal and contract.

3. Prosecution and Progress

Work by County Forces

Wood County will be placing the Asphaltic Surface. Contact Wood County Highway Engineer Roland Hawk (715) 424-7401, five (5) days prior to final placement of base aggregate to ensure timely completion of Asphaltic Surface paving. Provide Wood County two (2) working days to complete paving operations.

Fish Spawning

There shall be no in-stream disturbance of the Hemlock Creek as a result of construction activity under or for this contract, from March 1 to June 1 both dates inclusive, in order to avoid adverse impacts upon the spawning of fish.

Migratory Birds

Swallow and other migratory birds' nests have been observed on or under the existing bridge. All active nests (when eggs or young are present) of migratory birds are protected under the federal Migratory Bird Treaty Act.

The nesting season for swallows and other birds is usually between May 1 and August 30. Either prevent active nests from becoming established, or apply for a depredation permit from the US Fish and Wildlife Service for work that may disturb or destroy active nests. The need for a permit may be avoided by removing the existing bridge structure prior to nest occupation by birds, or clearing nests from all structures before the nests become active in early spring. As a last resort, prevent birds from nesting by installing a suitable netting device on the remaining structure prior to nesting activity. Include the cost for preventing nesting in the cost of Removing Old Structure Over Waterway with Minimal Debris.

Birds (20090901)

Wood County Highway Department will install netting on the structure the week of April 23, 2018 to prevent swallows from nesting prior to the nesting season and until the contract for this project is executed. The Contractor will be responsible for preventing swallows from nesting on the structure after the contract has been executed.

4. Traffic.

Wood County Highway Department will install the CTH E traffic control for the detour route. The Contractor must notify Wood County Highway Department Engineer Roland Hawk, 715-424-7401 a minimum of two weeks prior to beginning construction.

5. Schedule.

Construction may begin on June 1, 2018 and must be completed and open CTH E to through traffic prior to 5:00 PM, Friday, August 24th, 2018. The contract time allotted for this project is 35 Working Days.

6. Liquidated Damages.

Contractor shall pay Wood County \$500.00 per day for each day that expires after 5:00 PM Friday August 24, 2018 or for Working Days beyond the allotted 35 days, that the bridge over Hemlock Creek on CTH E is not open to traffic. Contractor shall construct the aggregate base in accordance with the Standard Specifications and to the width, elevation and section as shown on the plans, then provide two (2) working days for Wood County Highway to pave asphalt approaches. Contractor must account for this time in their schedule.

A full day is counted if traffic is not able to cross the bridge by 5:00 PM each day. If the bridge is opened after 5:00 PM regardless of the time, full damages apply for that day.

7. Utilities.

There are overhead utility facilities located within the project limits for this project. There may be underground utility facilities located within the project limits. The contractor shall coordinate construction activities with a call to Diggers Hotline or a direct call to the utilities that have facilities in the area, as required by statutes. The contractor shall use caution to ensure the integrity of underground facilities and shall maintain code clearances from overhead facilities at all times.

Packerland Broadband has a fiber optic line running along the east side of the roadway approximately 20 feet off the centerline. The fiber optic line will be in conflict near the bridge. Packerland will relocate prior to construction to the east edge of the existing Right-of Way from Sta. 7+00 – 11+75.

We Energies has an underground gas line running along each side of the roadway near the existing Right-of-Way. There is a potential for conflict near Sta. 9+00, RT. Heavy Riprap will be installed

at this location, which will require a minimum of two feet of excavation below existing ground. No conflicts are anticipated along the west side of the roadway.

TDS Telecom has an underground Telephone and Fiber Optic running along the east side of the roadway. The Fiber Optic is near the existing Right-of-Way and is not expected to be in conflict, however, the existing Telephone (copper) could potentially be in conflict at Sta. 9+00, RT and near the proposed bridge location where Heavy Riprap will be installed.

8. Information to Bidders, Wisconsin DNR General Permit.

The County has obtained a Wisconsin DNR General Permit. Comply with the requirements of the permit in addition to requirements of the special provisions. A copy of the permit will be issued with notice of award or it can be viewed at the Wood County Highway Department by contacting Roland Hawk at 715-424-7401.

In association with the General Permit, the Wisconsin DNR requests the contractor abides by the Best Management Practices for Stream Culverts (Navigable Waterways). This document can be found at the WisDNR website:

<https://dnr.wi.gov/topic/Sectors/documents/BMPsForCulverts.pdf>

9. Environmental Protection, Dewatering.

Supplement 107.18 of the standard specifications as follows:

If dewatering is required, treat the water to remove suspended solids before allowing it to enter any waterway or wetland. Provide a settling basin, or other suitable means approved by the engineer, with sufficient capacity and size to provide an efficient means to filter the water from the dewatering operation before it is discharged back into the wetland or waterway as provided in the standard specifications and these special provisions. Treatment practices may include the use of natural polyacrylamide such as chitosan, as approved by the engineer.

Conform to dewatering guidelines of WisDNR Storm Water Construction Technical Standards, Code #1061, "Dewatering". This document can be found at the WisDNR website: http://dnr.wi.gov/topic/stormwater/standards/const_standards.html

Include the cost of all work and materials associated with water treatment and/or dewatering in the unit bid price for Excavation for Structures. Work includes furnishing all materials, excavation, maintenance, cleaning, disposal of surplus material, removal of the basin after completion of dewatering operations, and all labor, tools, equipment and incidentals necessary to complete the work in accordance to the contract.

10. Environmental Protection, Aquatic Exotic Species Control.

Exotic invasive organisms such as VHS, zebra mussels, purple loosestrife, and Eurasian water milfoil are becoming more prolific in Wisconsin and pose adverse effects to waters of the state. Wisconsin State Statutes 30.07, "Transportation of Aquatic Plants and Animals; Placement of

Objects in Navigable Waters”, details the state law that requires the removal of aquatic plants and zebra mussels each time equipment is put into state waters.

At construction sites that involve navigable water or wetlands, use the follow cleaning procedures to minimize the chance of exotic invasive species infestation. Use these procedures for all equipment that comes in contact with waters of the state and/or infested water or potentially infested water in other states.

Ensure that all equipment that has been in contact with waters of the state, or with infested or potentially infested waters, has been decontaminated for aquatic plant materials and zebra mussels prior to being used in other waters of the state. Before using equipment on this project, thoroughly disinfect all equipment that has come into contact with potentially infested waters. Use the following inspection and removal procedures (guidelines from the Wisconsin Department of Natural Resources http://dnr.wi.gov/fish/documents/disinfection_protocols.pdf) for disinfection:

Prior to leaving the contaminated site, wash machinery and ensure that the machinery is free of all soil and other substances that could possibly contain exotic invasive species;

Drain all water from boats, trailers, bilges, live wells, coolers, bait buckets, engine compartments, and any other area where water may be trapped;

Inspect boat hulls, propellers, trailers and other surfaces. Scrape off any attached mussels, remove any aquatic plant materials (fragments, stems, leaves, seeds, or roots), and dispose of removed mussels and plant materials in a garbage can prior to leaving the area or invested waters; and

Disinfect your boat, equipment and gear by either:

Washing with ~212° F water (steam clean), or

Drying thoroughly for five days after cleaning with soap and water and/or high pressure water, or

Disinfecting with either 200 ppm (0.5 oz per gallon or 1 Tablespoon per gallon) Chlorine for 10-minute contact time or 1:100 solution (38 grams per gallon) of Virkon Aquatic for 20- to 30-minute contact time. Note: Virkon is not registered to kill zebra mussel veligers nor invertebrates like spiny water flea. Therefore this disinfect should be used in conjunction with a hot water (>104° F) application.

Complete the inspection and removal procedure before equipment is brought to the project site and before the equipment leaves the project site.

107-055 (20110615)

11. Construction Over or Adjacent to Navigable Waters.

Supplement standard spec 107.19 with the following:

The Hemlock Creek is classified as a navigable waterway.

12. Erosion Control Structures.

Within seven calendar days after the commencement of work on the bridge superstructure, place all permanent erosion control devices, including riprap, erosion mat, ditch checks, seed, fertilizer, mulch, soil stabilizer, or any other item required by the contract or deemed necessary by the

engineer. These devices shall be in place in the area under the bridge and on both sides of the roadway, from the waterway to a point 100-feet behind the backwall of the abutment. Within said limits, place these devices to a height equivalent to the calculated water elevation resulting from a storm that occurs on the average of once every two years (Q2) as shown on the plan, or as directed by the engineer. Prior to initial construction operations, place turbidity barriers, silt screens, and other temporary erosion control measures as shown on the plans, and remove them after the permanent erosion control devices are in place unless directed otherwise by the engineer.

In the event that construction activity does not disturb the existing ground below the Q2 elevation, the above timing requirements for permanent erosion control shall be waived.

13. Removing Old Structure Over Waterway With Minimal Debris Station 10+00, Item 203.0600.S.

Conform to standard spec 203 as modified in this special provision.

Add the following to standard spec 203:

203.3.6 Removals Over Waterways and Wetlands

203.3.6.2 Removing Old Structure Over Waterway with Minimal Debris

- (1) Remove the existing structure P-71-127 over Hemlock Creek in large sections and conforming to the contractor's approved structure removal and clean-up plan. During superstructure removal, prevent all large pieces and minimize the number of small pieces from entering the waterway or wetland. Remove all reinforcing steel, all concrete, and all other debris that falls into the waterway or wetland. The contractor may leave limited amounts of small concrete pieces scattered over the waterway floor or wetland only if the engineer allows.
- (2) Submit a structure removal and clean-up plan as part of the erosion control implementation plan required under standard spec 107.20. Do not start work under the structure removal and clean-up plan without the department's written approval of the plan. Include the following information in the structure removal and clean-up plan:
 - Methods and schedule to remove the structure.
 - Methods to control potentially harmful environmental impacts.
 - Methods for superstructure removal that prevent all large pieces and minimize the number of small pieces from entering the waterway or wetlands.
 - Methods to control dust and contain slurry.
 - Methods for removing abutments. If blasting in water, include restrictions that regulatory agencies and the contract require.
 - Methods for cleaning the waterway or wetlands.
- (3) If stockpiling spoil material, place it on an upland site an adequate distance from the waterway, wetland, or any open water created by excavation. Install silt fence between the spoil pile and the waterway, wetland, or excavation site.

Add the following Removing Old Structure bid item to standard spec 203.5.1:

ITEM NUMBER	DESCRIPTION	UNIT
203.0600.S	Removing Old Structure Over Waterway With Minimal Debris Station 10+00	LS

Railing on Structure

Salvage railing from the structure and deliver to the Wood County Highway Shop, 555 17th Avenue North, Wisconsin Rapids. Contact Roland Hawk at 715-424-7401 to coordinate the delivery. Cost for salvage and delivery is incidental to Removing Old Structure.

14.QMP Base Aggregate.

A Description

A.1 General

- (1) This special provision describes contractor quality control (QC) sampling and testing for base aggregates, documenting those test results, and documenting related production and placement process changes. This special provision also describes department quality verification (QV), independent assurance (IA), and dispute resolution.
- (2) Conform to standard spec 301, standard spec 305, and standard spec 310 as modified here in this special provision. Apply this special provision to material placed under all of the Base Aggregate Dense and Base Aggregate Open Graded bid items, except do not apply this special provision to material classified as reclaimed asphaltic pavement placed under the Base Aggregate Dense bid items.
- (3) Do not apply this special provision to material placed and paid for under the Aggregate Detours, Breaker Run, Select Crushed, Pit Run, Subbase, or Riprap bid items.
- (4) Provide and maintain a quality control program, defined as all activities related to and documentation of the following:
 1. Production and placement control and inspection.
 2. Material sampling and testing.
- (5) Chapter 8 of the department's construction and materials manual (CMM) provides additional detailed guidance for QMP work and describes required sampling and testing procedures.
<http://wisconsindot.gov/rdwy/cmm/cm-08-00toc.pdf>

A.2 Small Quantities

- (1) The department defines a small quantity, for each individual Base Aggregate bid item, as a contract quantity of 9000 tons or less of material as shown in the schedule of items under that bid item.
- (2) The requirements under this special provision apply equally to a small quantity for an individual bid item except as follows:

A.2.1 Quality Control Plan

- (1) Submit an abbreviated quality control plan consisting of the following:

1. Organizational chart including names, telephone numbers, current certifications with HTCP numbers, and expiration dates, and roles and responsibilities of all persons involved in the quality control program for material under affected bid items.

A.2.2 Contractor Testing

1. Testing frequency:

Contract Quantity	Minimum Required Testing per source
≤ 6000 tons	One stockpile test before placement, and two production or one loadout test. ^{[1] [2]}
> 6000 tons and ≤ 9000 tons	One stockpile and Three placement tests ^[3] ^{[4] [5]}

^[1] Submit production test results to the engineer for review before incorporating the material into the work. Production test results are valid for a period of 3 years.

^[2] If the actual quantity overruns 6,000 tons, on the next day of placement perform one randomly selected placement test for each 3000 tons, or fraction of 3000 tons, of overrun.

^[3] If the actual quantity overruns 9000 tons, on the next day of placement perform one randomly selected placement test for each 3000 tons, or fraction of 3000 tons, of overrun.

^[4] For 3-inch material or lift thickness of 3 inch or less, obtain samples at load-out.

^[5] Divide the aggregate into uniformly sized sublots for testing.

2. Stockpile testing for concrete pavement recycled in place will be sampled on the first day of production.

3. Until a four point running average is established, individual placement tests will be used for acceptance. Submit aggregate load-out and placement test results to the engineer within one business day of obtaining the sample. Assure that all properties are within the limits specified for each test.

4. Material represented by a subplot with any property outside the specification limits is nonconforming. The department may reject material or otherwise determine the final disposition of nonconforming material as specified in standard spec 106.5.

A.2.3 Department Testing

- (1) The department will perform testing as specified in B.8 except as follows:
 - Department testing may be waived for contract bid item quantities of 500 tons or less.

B Materials

B.1 Quality Control Plan

- (1) Submit a comprehensive written quality control plan to the engineer at or before the pre-construction meeting. Do not place base before the engineer reviews and comments on the plan. Construct the project as that plan provides.
- (2) Do not change the quality control plan without the engineer's review. Update the plan with changes as they become effective. Provide a current copy of the plan to the engineer and

post in each of the contractor's laboratories as changes are adopted. Ensure that the plan provides the following elements:

1. An organizational chart with names, telephone numbers, current certifications and/or titles, and roles and responsibilities of QC personnel.
2. The process used to disseminate QC information and corrective action efforts to the appropriate persons. Include a list of recipients, the communication means that will be used, and action time frames.
3. A list of source and processing locations, section and quarter descriptions, for all aggregate materials requiring QC testing.
4. Test results for wear, sodium sulfate soundness, freeze/thaw soundness, and plasticity index of all aggregates requiring QC testing. Obtain this information from the region materials unit or from the engineer.
5. Descriptions of stockpiling and hauling methods.
6. Locations of the QC laboratory, retained sample storage, and where control charts and other documentation is posted.
7. An outline for resolving a process control problem. Include responsible personnel, required documentation, and appropriate communication steps.

B.2 Personnel

- (1) Have personnel certified under the department's highway technician certification program (HTCP) perform sampling, testing, and documentation as follows:

SAMPLING AND TESTING ROLES	TEST STANDARD	REQUIRED CERTIFICATION
Random Sampling of Materials Sampling Aggregates	ASTM D3665 ASHTO T2 ^[1]	Transportation Materials Sampling Technician (TMS) Aggregate Technician I (AGGTEC-I) AGGTEC-I Assistant Certified Technician (ACT-AGG)
Percent passing the 200 Sieve Gradation Moisture Content Fractured Faces	AASHTO T11 AASHTO T27 AASHTO T255 ASTM D5821	Aggregate Technician I (AGGTEC-I) AGGTEC-I Assistant Certified Technician (ACT-AGG)
Liquid and Plasticity Index	AASHTO T89 AASHTO T90	Aggregate Testing for Transportation Systems (ATTS) Grading Technician I (GRADINGTEC-1) Grading Assistant Certified Technician (ACT-Grading)
Plasticity Check	AASHTO T90	Aggregate Technician I (AGGTEC-I) AGGTEC-I Assistant Certified Technician (ACT-AGG) Grading Technician I (GRADINGTEC-1) Grading Assistant Certified Technician (ACT-Grading)

- [1] Plant personnel under the direct observation of an aggregate technician certified at level one or higher may operate equipment to obtain samples.
- (2) A certified technician must coordinate and take responsibility for the work an ACT performs. Have a certified technician ensure that all sampling and testing is performed correctly, analyze test results, and post resulting data. No more than one ACT can work under a single certified technician.

B.3 Laboratory

- (1) Perform QC testing at a department-qualified laboratory. Obtain information on the Wisconsin laboratory qualification program from:
- Materials Management Section
3502 Kinsman Blvd.
Madison, WI 53704
Telephone: (608) 246-5388

<http://wisconsin.gov/Pages/doing-bus/eng-consultants/cnslt-rsrcs/tools/appr-prod/qual-labs.aspx>

B.4 Quality Control Documentation

B.4.1 General

- (1) Submit base aggregate placement documentation to the engineer within 10 business days after completing base placement. Ensure that the submittal is complete, neatly organized, and includes applicable project records and control charts.

B.4.2 Records

- (1) Document all placement observations, inspection records, and control adjustments daily in a permanent field record. Also include all test results in the project records. Provide test results to the engineer within one business day after obtaining a sample. Post or distribute tabulated results using a method mutually agreeable to the engineer and contractor.

B.4.3 Control Charts

- (1) Plot gradation and fracture on the appropriate control chart as soon as test results are available. Format control charts according to CMM 8.30. Include the project number on base placement control charts. Maintain separate control charts for each base aggregate size, source or classification, and type.
- (2) Provide control charts to the engineer within one business day after obtaining a sample. Post or distribute charts using a method mutually agreeable to the engineer and contractor. Update control charts daily to include the following:
1. Contractor individual QC tests.
 2. Department QV tests.
 3. Department IA tests.
 4. Four-point running average of the QC tests.
- (3) Except as specified under B.8.2.1 for nonconforming QV placement tests, include only QC placement tests in the running average. The contractor may plot process control or informational tests on control charts, but do not include these tests, conforming QV tests, or IA tests in the running average.

B.5 Contractor Testing

- (1) Test gradation, fracture, liquid limit and plasticity index during placement for each base aggregate size, source or classification, and type.
- (2) Perform one stockpile test from each source before placement. One stockpile test may be used for multiple projects up to 60 calendar days.
- (3) Test gradation once per 3000 tons of material placed or fraction thereof. Determine random sample locations and provide those sample locations to the engineer. Obtain samples after the material has been bladed, mixed, and shaped but before watering and compacting; except collect 3-inch samples or lift thickness of 3 inch or less from the stockpile at load-out. Do not sample from material used to maintain local traffic or from areas of temporary base that will not have an overlying pavement. On days when placing only material used to maintain local traffic or only temporary base that will not have an overlying pavement, no placement testing is required.
- (4) Split each contractor QC sample and identify it according to CMM 8.30. Retain the split for seven calendar days in a dry, protected location. If requested for department comparison testing, deliver the split to the engineer within one business day.
- (5) The engineer may require additional sampling and testing to evaluate suspect material or the technician's sampling and testing procedures.
- (6) Test fracture for each gradation test until the fracture running average is above the lower warning limit. Subsequently, the contractor may reduce the frequency to one test per 10 gradation tests if the fracture running average remains above the warning limit.
- (7) Test the liquid limit and plasticity index for the first gradation test. Subsequently, test the liquid limit and plasticity index a minimum of once per 10 gradation tests.

B.6 Test Methods

B.6.1 Gradation

- (1) Test gradation using a washed analysis conforming to the following as modified in CMM 8.60:
Gradation.....AASHTO T 27
Material finer than the No. 200 sieve..... AASHTO T 11
- (2) For 3-inch base, if 3 consecutive running average points for the percent passing the No. 200 sieve are 8.5 percent or less, the contractor may use an unwashed analysis. Wash at least one sample out of 10. If a single running average for the percent passing the No. 200 sieve exceeds 8.5 percent, resume washed analyses until 3 consecutive running average points are again 8.5 percent passing or less.
- (3) Maintain a separate control chart for each sieve size specified in standard spec 305 or standard spec 310 for each base aggregate size, source or classification, and type. Set control and warning limits based on the standard specification gradation limits as follows:
 1. Control limits are at the upper and lower specification limits.
 2. There are no upper warning limits for sieves allowing 100 percent passing and no lower control limits for sieves allowing 0 percent passing.
 3. Dense graded warning limits, except for the No. 200 sieve, are 2 percent within the upper and lower control limits. Warning limits for the No. 200 sieve are set 0.5 percent within the upper and lower control limits.

4. Open graded warning limits for the 1-inch, 3/8-inch, and No. 4 sieves are 2 percent within the upper and lower control limits. Upper warning limits for the No. 10, No. 40, and No. 200 sieves are 1 percent inside the upper control limit.

B.6.2 Fracture

- (1) Test fracture conforming to CMM 8.60. The engineer will waive fractured particle testing on quarried stone.
- (2) Maintain a separate fracture control chart for each base aggregate size, source or classification, and type. Set the lower control limit at the contract specification limit, either specified in another special provision or in table 301-2 of standard spec 301.2.4.5. Set the lower warning limit 2 percent above the lower control limit. There are no upper limits.

B.6.3 Liquid Limit and Plasticity

- (1) Test the liquid limit and plasticity according to AASHTO T 89 and T 90.
- (2) Ensure the material conforms to the limits specified in standard spec table 301-2.

B.7 Corrective Action

B.7.1 General

- (1) Consider corrective action when the running average trends toward a warning limit. Take corrective action if an individual test exceeds the contract specification limit. Document all corrective actions both in the project records and on the appropriate control chart.

B.7.2 Placement Corrective Action

- (1) Do not blend additional material on the roadbed to correct gradation problems.
- (2) Notify the engineer whenever the running average exceeds a warning limit. When two consecutive running averages exceed a warning limit, the engineer and contractor will discuss appropriate corrective action. Perform the engineer's recommended corrective action and increase the testing frequency as follows:
 1. For gradation, increase the QC testing frequency to at least one randomly sampled test per 1000 tons placed.
 2. For fracture, increase the QC testing frequency to at least one test per gradation test.
- (3) If corrective action improves the property in question such that the running average after four additional tests is within the warning limits, the contractor may return to the testing frequency specified in B.5.3. If corrective action does not improve the property in question such that the running average after four additional individual tests is still in the warning band, repeat the steps outlined above starting with engineer notification.
- (4) If the running average exceeds a control limit, material starting from the first running average exceeding the control limit and ending at the first subsequent running average inside the control limit is nonconforming and subject to pay reduction.
- (5) For individual test results significantly outside the control limits, notify the engineer, stop placing base, and suspend other activities that may affect the area in question. The engineer and contractor will jointly review data, data reduction, and data analysis; evaluate sampling and testing procedures; and perform additional testing as required to determine the extent of potentially unacceptable material. The engineer may direct the contractor to remove and replace that material. Individual test results are significantly outside the control limits if meeting one or more of the following criteria:

1. A gradation control limit for the No. 200 sieve is exceeded by more than 3.0 percent.
2. A gradation control limit for any sieve, except the No. 200, is exceeded by more than 5.0 percent.
3. The fracture control limit is exceeded by more than 10.0 percent.

B.8 Department Testing

B.8.1 General

- (1) The department will conduct verification testing to validate the quality of the product and independent assurance testing to evaluate the sampling and testing. The department will provide the contractor with a listing of names and telephone numbers of all QV and IA personnel for the project, and provide test results to the contractor within two business days after the department obtains the sample.

B.8.2 Verification Testing

B.8.2.1 General

- (1) The department will have an HTCP technician, or ACT working under a certified technician, perform QV sampling and testing. Department verification testing personnel must meet the same certification level requirements specified in B.2 for contractor testing personnel for each test result being verified. The department will notify the contractor before sampling so the contractor can observe QV sampling.
- (2) The department will conduct QV tests of each base aggregate size, source or classification, and type during placement conforming to the following:
 1. Perform one stockpile test from each source before placement.
 2. At least one random test per 30,000 tons, or fraction of 30,000 tons, placed.
- (3) The department will sample randomly, at locations independent of the contractor's QC work, collecting one sample at each QV location. The department will collect QV samples after the material has been bladed, mixed, and shaped but before watering and compacting; except, for 3-inch aggregates or for a lift thickness of 3 inch or less, the department will collect samples at load-out. The department will split each sample, test half for QV, and retain half.
- (4) The department will conduct QV tests in a separate laboratory and with separate equipment from the contractor's QC tests. The department will use the same methods specified for QC testing.
- (5) The department will assess QV results by comparing to the appropriate specification limits. If QV test results conform to the specification, the department will take no further action. If QV test results are nonconforming, add the QV to the QC test results as if it were an additional QC test.

B.8.3 Independent Assurance

- (1) Independence assurance is unbiased testing the department performs to evaluate the department's QV and the contractor's QC sampling and testing including personnel qualifications, procedures, and equipment. The department will perform an IA review according to the department's independent assurance program. That review may include one or more of the following:
 1. Split sample testing.
 2. Proficiency sample testing.

3. Witnessing sampling and testing.
 4. Test equipment calibration checks.
 5. Reviewing required worksheets and control charts.
 6. Requesting that testing personnel perform additional sampling and testing.
- (2) If the department identifies a deficiency, and after further investigation confirms it, correct that deficiency. If the contractor does not correct or fails to cooperate in resolving identified deficiencies, the engineer may suspend placement until action is taken. Resolve disputes as specified in B.9.

B.9 Dispute Resolution

- (1) The engineer and contractor should make every effort to avoid conflict. If a dispute between some aspect of the contractor's and the engineer's testing program does occur, seek a solution mutually agreeable to the project personnel. The department and contractor may review the data, examine data reduction and analysis methods, evaluate sampling and testing procedures, and perform additional testing. Use ASTM E 178 to evaluate potential statistically outlying data.
- (2) Production test results, and results from other process control testing, may be considered when resolving a dispute.
- (3) If the project personnel cannot resolve a dispute, and the dispute affects payment or could result in incorporating non-conforming product, the department will use third party testing to resolve the dispute. The department's central office laboratory, or a mutually agreed on independent testing laboratory, will provide this testing. The engineer and contractor will abide by the results of the third party tests. The party in error will pay service charges incurred for testing by an independent laboratory. The department may use third party test results to evaluate the quality of questionable materials and determine the appropriate payment. The department may reject material or otherwise determine the final disposition of nonconforming material as specified in standard spec 106.5.

C (Vacant)

D (Vacant)

E Payment

- (1) Costs for all sampling, testing, and documentation required under this special provision are incidental to this work. If the contractor fails to perform the work required under this special provision, the department may reduce the contractor's pay. The department will administer pay reduction under the non-performance of QMP administrative item.
- (2) For material represented by a running average exceeding a control limit, the department will reduce pay according to CMM 8-10.5.2 for the affected Base Aggregate bid items listed in subsection A. The department will administer pay reduction under the Nonconforming QMP Base Aggregate Gradation or Nonconforming QMP Base Aggregate Fracture Administrative items. The department will determine the quantity of nonconforming material as specified in B.7.2.

stp-301-010 (20171130)



Wood County

WISCONSIN

OFFICE OF
HIGHWAY COMMISSION

Douglas J. Passineau
COMMISSIONER

Current Project Updates

Prepared by: Douglas Passineau, Highway Commissioner

May 3, 2018

Highway, Infrastructure, and Recreation Committee Meeting

Projects and Maintenance

1. Snow and Ice Control – State/County/Municipal Roads
2. Thaw Frozen Culverts – State/County/Municipal Roads
3. Sign Repairs – State/County Roads
4. Repairing Potholes – State/County Roads
5. Clean Islands – State/County Roads
6. Bridge Repairs – State/County Roads
7. Cleaning Drains – State/County Roads
8. Brushing – County Roads
9. Mastic Patching – State Roads
10. Grading Gravel Shoulders
11. Sweeping Pavement
12. Rubber Crack Sealing
13. Paver Training
14. All Staff Spring Training Day – Friday, April 20th, 2018

Committee Report

County of Wood

Report of claims for: Highway Department

For the period of: March, 2018

For the range of vouchers: 16180233 - 16180325

Voucher	Vendor Name	Nature of Claim	Doc Date	Amount	Paid
16180233	POSTMASTER - WISCONSIN RAPIDS	Stamps	03/22/2018	\$115.00	P
16180234	ABR EMPLOYMENT SERVICES	Temporary Admin. Assistant	03/01/2018	\$2,587.20	P
16180235	ADVANCE SUPPLY LLC	Cleaning Supplies	03/09/2018	\$35.36	P
16180236	COMPASS MINERALS	Salt for Snow and Ice Control	03/13/2018	\$38,441.23	P
16180237	KOLO TRUCKING AND EXCAVATING INC	Sand	03/04/2018	\$2,675.93	P
16180238	MEAD & HUNT	CTH E Bridge Engineering	03/19/2018	\$9,833.66	P
16180239	MILLER-BRADFORD & RISBERG INC	3650 Noram Grader	03/05/2018	\$158,000.00	P
16180240	NATL ASSN OF COUNTY ENGINEERS	Annual Conference	03/08/2018	\$645.00	P
16180241	OMNNI ASSOCIATES	CTH U Design Engineering	03/12/2018	\$36,400.00	P
16180242	SOLARUS	Telephone - Admin. (Doug)	03/16/2018	\$36.54	P
16180243	WATER WORKS & LIGHTING COMM	Utilities - Hot Mix Plant	03/13/2018	\$94.90	P
16180244	WI COUNTY HIGHWAY ASSOCIATION	Summer Road School	03/21/2018	\$350.00	P
16180245	LEHMAN DAVID C	Out of County Meal Reimbursemt	03/22/2018	\$12.00	P
16180246	MANGEN JOACHIM	Out of County Meal Reimbursemt	03/22/2018	\$12.00	P
16180247	SEEVERS MATTHEW J	Tool Allowance	03/28/2018	\$325.00	P
16180248	ADVANCE JANITORIAL SERVICE & SUPPLY	Carpet/Floor & Cleaning Svc	03/25/2018	\$541.95	P
16180249	AT&T-ATLANTA	Telephone (Marshfield)	03/13/2018	\$83.54	P
16180250	BANKCARD SERVICES	Credit Card Invoice	03/20/2018	\$378.75	P
16180251	MARSHFIELD UTILITIES	Electric/Water/Sewer	03/29/2018	\$357.75	P
16180252	CITY OF PITTSVILLE TREASURER	Water/Sewer-Pittsville Shop	03/31/2018	\$145.12	P
16180253	PRECISE MRM LLC	FLATPLAN USA&GPRS NAF SOFTWARE	03/28/2018	\$648.00	P
16180254	SOLARUS	Telephone-WI Rapids & Hot Mix	04/01/2018	\$250.13	P
16180255	STILES CYNTHIA RPA	CTH D Archival Investigation	03/15/2018	\$500.00	P
16180256	TDS TELECOM	Telephone	03/28/2018	\$142.78	P
16180257	WATER WORKS & LIGHTING COMM	Utilities-WI Rapids & Hot Mix	03/27/2018	\$2,893.87	P
16180258	WE ENERGIES	Natural Gas-HM/WR/MFLD Shops	03/29/2018	\$1,152.68	P
16180259	ACE HARDWARE	Shop Parts	03/13/2018	\$167.57	P
16180260	ADVANCE AUTO PARTS	Parts, Batteries	03/01/2018	\$1,856.48	P
16180261	APPLIED INDUSTRIAL TECHNOLOGY	Parts	03/05/2018	\$68.29	P
16180262	APPLIED MAINTENANCE SUPPLIES & SOLUTIONS	Parts	03/02/2018	\$1,419.16	P
16180263	ARING EQUIPMENT COMPANY	Parts	03/19/2018	\$1,766.12	P
16180264	BATTERIES PLUS BULBS	Batteries	03/26/2018	\$132.00	P
16180265	BEAVER OF WISCONSIN INC	Parts	03/21/2018	\$593.50	P
16180266	BROOKS TRACTOR COMPANY	Parts	03/09/2018	\$1,737.96	P

Committee Report - County of Wood

Highway Department - March, 2018

16180233 - 16180325

Voucher	Vendor Name	Nature of Claim	Doc Date	Amount	Paid
16180267	BURNS INDUSTRIAL SUPPLY CO INC	Parts	03/01/2018	\$524.46	P
16180268	CHILI IMPLEMENT CO	Parts	03/08/2018	\$407.76	P
16180269	CRESCENT ELECTRIC SUPPLY CO	Parts	03/09/2018	\$8.62	P
16180270	CUMMINS NPOWER LLC	Bearing - Ball	03/02/2018	\$191.32	P
16180271	DIAMOND MOWERS	Parts	03/09/2018	\$2,198.39	P
16180272	DOORWORKS INC	Parts	03/27/2018	\$87.00	P
16180273	FASTENAL COMPANY	Parts	03/12/2018	\$277.44	P
16180274	INSIGHT FS	LP Gas	03/12/2018	\$994.00	P
16180275	JX ENTERPRISES INC	Parts	03/05/2018	\$4,043.32	P
16180276	MSC INDUSTRIAL SUPPLY CO	Parts	03/21/2018	\$428.79	P
16180277	MID-STATE TRUCK SERVICE INC	Parts	03/01/2018	\$1,360.12	P
16180278	MILLER-BRADFORD & RISBERG INC	Parts	03/07/2018	\$317.14	P
16180279	MISSISSIPPI WELDERS SUPPLY CO INC	Parts	03/26/2018	\$170.46	P
16180280	MONROE TRUCK EQUIPMENT	Parts	03/22/2018	\$74.94	P
16180281	NAPA AUTO PARTS - MARSHFIELD	Parts	03/01/2018	\$56.87	P
16180282	NORTH CENTRAL UTILITY OF WI	Parts	03/02/2018	\$405.66	P
16180283	NORTHWEST PROCESS EQUIPMENT	Flight, Veiling 10" High x 60'	03/12/2018	\$5,417.39	P
16180284	PITTSVILLE FARM & HOME CENTER	Parts	04/02/2018	\$20.28	P
16180285	RAPIDS FORD LINCOLN MERCURY	Service	03/01/2018	\$186.41	P
16180286	RAPIDS RENTAL & SUPPLY	Parts	03/05/2018	\$573.84	P
16180287	RENT-A-FLASH INC	Signs	03/07/2018	\$136.80	P
16180288	RON'S REFRIGERATION & AC INC	Parts	03/21/2018	\$1,078.34	P
16180289	RUBBER INC	Parts	03/01/2018	\$3,510.70	P
16180290	SCAFFIDI TRUCK CENTER	Parts	03/14/2018	\$214.14	P
16180291	SCHILLING SUPPLY COMPANY	Parts	03/06/2018	\$355.28	P
16180292	TEAM MATTHEWS	Tires	03/15/2018	\$535.40	P
16180293	TOOL SHED	Parts	03/22/2018	\$82.83	P
16180294	TRUCK COUNTRY OF WISCONSIN	Parts	03/05/2018	\$338.17	P
16180295	TRUCK EQUIPMENT INC	Parts	03/05/2018	\$71.78	P
16180296	WHEELERS OF WISCONSIN RAPIDS	Parts	03/05/2018	\$63.42	P
16180297	WISCONSIN METALS	Blacksmith Steel	03/23/2018	\$4,106.00	P
16180298	CITY OF WIS RAPIDS TREASURER	Signs	03/12/2018	\$59.50	P
16180299	WISCONSIN VALLEY BUILDING PRODUCTS	Maul - 13 LBS	03/20/2018	\$49.99	P
16180300	ABR EMPLOYMENT SERVICES	Temporary Employee	03/29/2018	\$1,724.80	P
16180301	ALLIANT ENERGY/ WP&L	Electric - Pittsville	04/02/2018	\$123.85	P
16180302	AMERICAN ENGINEERING	Geotechnical Services	03/30/2018	\$3,480.00	P
16180303	AT&T MOBILITY II LLC	Wireless (Engineer)	03/16/2018	\$87.32	P
16180304	FRONTIER	Telephone - Marshfield	03/28/2018	\$118.96	P
16180305	HAMM BARRY	Out-of-County Meal Reimburesmt	04/02/2018	\$12.00	P
16180306	PETROTECH LLC	Fuel Pump Repair	04/03/2018	\$150.00	P
16180307	PROVISION PARTNERS	Diesel Fuel & Gasoline	03/31/2018	\$64,523.46	P
16180308	REGISTRATION FEE TRUST	Replacement Plate-3125	03/31/2018	\$2.00	P
16180309	STERLING WATER INC	Water for Hot Mix	03/31/2018	\$9.00	P
16180310	TRACTOR SUPPLY CREDIT PLAN	Parts	03/30/2018	\$81.92	P

Committee Report - County of Wood

Highway Department - March, 2018

16180233 - 16180325

Voucher	Vendor Name	Nature of Claim	Doc Date	Amount	Paid
16180311	MID-STATES EQUIPMENT & SUPPLY	Mastic Crackfiller/Burner Tube	03/30/2018	\$22,977.12	P
16180312	SHERWIN INDUSTRIES INC	Rubber Crackfiller/Repair Part	03/19/2018	\$20,906.76	P
16180313	ADVANCED DISPOSAL	Garbage Disposal	03/31/2018	\$155.96	P
16180314	POMP'S TIRE SERVICE INC - GREEN BAY	Tires & Service	03/27/2018	\$91.13	P
16180315	SWIDERSKI EQUIPMENT INC	Parts	02/23/2018	\$1,701.36	P
16180316	V & H INC	Parts	03/31/2018	\$11,472.22	P
16180317	ADVANCED DISPOSAL	Garbage Disposal	03/31/2018	\$931.74	P
16180318	CINTAS CORPORATION	Cleaning Rugs & Uniforms	03/31/2018	\$633.99	P
16180319	VILLAGE OF PORT EDWARDS TREAS	Chipper Rental and Repair	04/02/2018	\$1,257.50	P
16180320	HOME DEPOT CREDIT SERV (Highway)	Parts	04/05/2018	\$86.04	P
16180321	NIEMAN'S SERVICE INC	Tow Vehicles	03/01/2018	\$525.00	P
16180322	SOLARUS	Telephone-Administration(Doug)	04/16/2018	\$36.55	P
16180323	WISCONSIN MEDIA	Legal Notices	03/31/2018	\$139.44	P
16180324	WE ENERGIES	Natural Gas-HM/WR/MRFLD/PITT	04/06/2018	\$1,316.21	P
16180325	NORTH CENTRAL REGION COMMISSIONERS	Spring Meeting	04/13/2018	\$150.00	P
Grand Total:				\$425,440.36	

Signatures

Committee Chair:

Committee Member:

Committee Member:

Committee Member:

Committee Member:

Committee Member:

Committee Member:

Committee Member:

Committee Member:

4/25/2018

County of Wood
DETAILED INCOME STATEMENT W/SUBTOTALS
Highway Departmentwide
Monday, April 30, 2018

	Actual	2018 Budget	Variance	Variance %
REVENUES				
Intergovernmental Revenues				
43531 State Aid-Transportation	\$524,147.98	\$1,823,120.00	(\$1,298,972.02)	(71.25%)
Total Intergovernmental	524,147.98	1,823,120.00	(1,298,972.02)	(71.25%)
Licenses and Permits				
44101 Utility Permits	325.00	1,050.00	(725.00)	(69.05%)
44102 Driveway Permits	100.00	860.00	(760.00)	(88.37%)
44260 Moving Permits	50.00	1,025.00	(975.00)	(95.12%)
Total Licenses and Permits	475.00	2,935.00	(2,460.00)	(83.82%)
Intergovernmental Charges for Services				
47230 State Charges	336,512.47	1,403,610.00	(1,067,097.53)	(76.03%)
47231 State Charges-Highway	68,501.25	250,030.00	(181,528.75)	(72.60%)
47232 State Charges-Machinery	671,184.20	2,177,319.00	(1,506,134.80)	(69.17%)
47300 Local Gov Chgs	64,059.03	561,660.00	(497,600.97)	(88.59%)
47330 Local Gov Chgs-Transp	171,983.88	1,207,485.00	(1,035,501.12)	(85.76%)
47332 Local Gov Chgs-Roads		403,360.00	(403,360.00)	(100.00%)
47333 Local Gov Chgs-Bridges		27,440.00	(27,440.00)	(100.00%)
Total Charges to Other Governments	1,312,240.83	6,030,904.00	(4,718,663.17)	(78.24%)
Interdepartmental Charges for Services				
47430 Dept Charges-Bldg Rent	8,173.85	34,745.00	(26,571.15)	(76.47%)
47470 Dept Charges-Highway	15,590.54	1,938,500.00	(1,922,909.46)	(99.20%)
Total Interdepartmental Charges	23,764.39	1,973,245.00	(1,949,480.61)	(98.80%)
Total Intergovernmental Charges for Services	1,336,005.22	8,004,149.00	(6,668,143.78)	(83.31%)
Miscellaneous				
48340 Gain/Loss-Sale of Salvage and Waste	151.95	6,700.00	(6,548.05)	(97.73%)
Total Miscellaneous	151.95	6,700.00	(6,548.05)	(97.73%)
TOTAL REVENUES	1,860,780.15	9,836,904.00	(7,976,123.85)	(81.08%)
EXPENDITURES				
Public Works-Highway				
53110 Hwy-Administration	90,348.13	288,760.00	198,411.87	68.71%
53120 Hwy-Engineer	57,601.15	245,004.00	187,402.85	76.49%
53191 Hwy-Other Administration	79,292.88	335,112.00	255,819.12	76.34%
53210 Hwy-Employee Taxes & Benefits	(709,448.37)		709,448.37	0.00%
53220 Hwy-Field Tools	3,149.77	13,236.00	10,086.23	76.20%
53230 Hwy-Shop Operations	70,095.45	280,244.00	210,148.55	74.99%
53232 Hwy-Fuel Handling	1,571.99	12,100.00	10,528.01	87.01%
53240 Hwy-Machinery Operations	320,335.75	1,713,616.00	1,393,280.25	81.31%
53260 Hwy-Bituminous Ops	33,463.04	224,207.00	190,743.96	85.07%
53262 Hwy-Bituminous Ops		111,922.00	111,922.00	100.00%
53266 Hwy-Bituminous Ops	90.63	1,345,590.00	1,345,499.37	99.99%
53270 Hwy-Buildings & Grounds	44,562.73	164,134.00	119,571.27	72.85%
53281 Hwy-Acquisition of Capital Assets	63,830.00		(63,830.00)	0.00%
53310 Hwy-Maintenance CTHS		3,300.00	3,300.00	100.00%
53311 Hwy-Maint CTHS Patrol Sectn	387,190.77	1,655,124.00	1,267,933.23	76.61%
53312 Hwy-Snow Remov	583,530.20	912,441.00	328,910.80	36.05%
53313 Hwy-Maintenance Gang	7,718.36	102,104.00	94,385.64	92.44%
53314 Hwy-Maint Gang-Materials	1,235.00	900.00	(335.00)	(37.22%)
53320 Hwy-Maint STHS	509,905.50	1,364,109.00	854,203.50	62.62%
53323 Hwy-Maint STHS PBM		52,600.00	52,600.00	100.00%
53330 Hwy-Local Roads	187,991.49	1,187,637.00	999,645.51	84.17%
53340 Hwy-County-Aid Road Construction		444,834.00	444,834.00	100.00%
53341 Hwy-County-Aid Bridge Construction	3,480.00	200,269.00	196,789.00	98.26%
53490 Hwy-State & Local Other Services	93,163.11	552,901.00	459,737.89	83.15%
Total Public Works-Highway	1,829,107.58	11,210,144.00	9,381,036.42	83.68%
Capital Outlay				
57310 Highway Capital Projects	148,438.03	2,499,999.00	2,351,560.97	94.06%
57930 Depreciation & Amortization	(1,737.00)		1,737.00	0.00%

4/25/2018

County of Wood
DETAILED INCOME STATEMENT W/SUBTOTALS
 Highway Departmentwide
 Monday, April 30, 2018

	Actual	2018 Budget	Variance	Variance %
Total Capital Outlay	146,701.03	2,499,999.00	2,353,297.97	94.13%
TOTAL EXPENDITURES	1,975,808.61	13,710,143.00	11,734,334.39	85.59%
NET INCOME (LOSS) *	(115,028.46)	(3,873,239.00)	3,758,210.54	(97.03%)