

# **AGENDA**

## **HIGHWAY, INFRASTRUCTURE & RECREATION COMMITTEE**

**DATE:** Thursday, October 6, 2022  
**TIME:** 8:00 a.m.  
**PLACE:** Powers Bluff County Park  
6990 Bluff Drive  
Arpin, WI 54410

1. Call meeting to order
2. Declaration of quorum
3. Public comments
4. Correspondence
5. Approve minutes from previous committee meetings.
6. ATV Trail/Route system update
  - a. Route Updates
- 7. HIGHWAY**
  - a. Highway staff reports
  - b. Highway revenue report
  - c. Highway vouchers
  - d. Purchase of adjacent property to Wis. Rapids Shop
  - e. STH 80/CTH A intersection letter
  - f. STP BIL Awarded Projects
  - g. Access issue on CTH A
  - h. Restricting firearms on department properties.
  - i. Shift differential for night watch person
- 8. PARKS AND FORESTRY**
  - a. Parks & Forestry staff reports
  - b. Special Use permits
  - c. Powers Bluff Trailhead Shelter
  - d. Wood County Forest handicap accessible hunting blinds
  - e. Parks and Forestry revenue reports
  - f. Parks & Forestry vouchers
9. Future Agenda Items
10. Parks, Forestry and Highway Department Annual Tour. This tour will visit multiple sites throughout Wood County and will begin immediately following the meeting.
11. Set next regular meeting date: November 3, 2022 at 9:00 am at Wood County Highway Department, 555 17<sup>th</sup> Ave North, Wisconsin Rapids, WI 54495
12. Adjournment



# Wood County

## WISCONSIN

OFFICE OF  
HIGHWAY COMMISSION

*Roland Hawk*  
COMMISSIONER

September 29, 2022

To: Highway, Infrastructure & Recreation Committee

From: Roland Hawk, Highway Commissioner

Subject: Commissioner Report for October 6, 2022 HIRC meeting

---

### **Department Activities**

#### **Personnel/Administration**

The Highway Department has filled all vacant positions except the Highway Engineer Position.

From late October to April Wisconsin DOT pays half of the salary for a Night Watchman position. The Night Watchman is responsible for personally dealing with overnight events or coordinating crews for more complex incidents such as storms or road closures. In past years, volunteers have stepped forward to perform this duty. As of September 28, no volunteers have offered to accept the position. Commissioner is requesting permission to offer step-up pay for the individual(s) who would be willing to perform the duties of the Night Watchman position. Commissioner has checked with HR Director and this shift differential for the Night Watchman would need HIRC approval.

Wisconsin DOT has split the cost for Snow Fighter Training. This is a virtual training for snow plow operators in Eau Claire. Original cost is \$400 per person for a two hour session. The Highway Department sent the newest ten employees who have not had experience operating a county plow truck.

#### **Highway/Facility Projects**

2022 Construction Projects:

- CTH X from STH 54 to STH 73

Contractor is nearly complete with contracted work. Work remaining before County Crews can resume paving operations include cutting and shaping ditches, placing base material, grading intersections, and landscaping. County crews will resume paving the week of October 3.

Contractor has not submitted an invoice since previous report, cost to date remain approximately \$500K

- CTH O & CTH PP
  - Work is complete and came in on budget.

Projects approved in the 2022 – 2027 STP-Rural program submitted in December include:

CTH N Bridge replacement (located 0.1 miles east of STH 186) FY 2024  
CTH HH & CTH F Intersection (recommended improvement is a roundabout) FY 2026

State Municipal Agreements have been approved and consultant selection is underway. Engineering will begin in January 2023.

Project approved in the 2023 – 2026 BIL STP-Urban program submitted in May include:

CTH U South Biron Drive – Huffman Road, Village of Biron FY 2025. This project has an agreement with the Village of Biron to participate in the project in various ways. Wood County is responsible for 100% of Design Engineering cost, and 20% of Construction costs. Total project cost is estimated at \$5.7 Million.

The State Municipal Agreement is expected to be approved in late December or January 2023.

WisDOT Proposed project at STH 80/STH 73/CTH A intersection near Pittsville proposes to construct a four-way stop intersection in 2024. During the recent six to twelve months the Highway Department has received numerous communications from local businesses and residents opposed to the proposed four-way stop intersection. Most favor a roundabout intersection. Commissioner is seeking HIRC approval to submit a formal response for the county.

Commissioner attended the PIT Committee meeting regarding the Wood County parcel located along 17<sup>th</sup> Ave. Commissioner shared information related to an ongoing space needs study. Members of the PIT committee suggested Commissioner move to secure adjacent lands on 17<sup>th</sup> Ave.

#### Highway Maintenance

Work in September included:

- Installing/replacing culverts and restoring drainage in roadside ditches
- Restriping/painting various county highways
- Paving various patches
- Installing GSB-88 on CTH H (form of seal coat)

#### Equipment/Machinery

New shop truck was picked up on September 29.

#### WCHA

North Central Region Fall meeting is scheduled for October 28 at Country Aire Restaurant, Stratford, WI. Time is 8:30 AM – 12:30 PM with lunch included.

Commissioner will participate in a Transportation Development Association (TDA) Round Table discussion with Legislators, business owners, municipal leaders in Wausau on October 27.

Commissioner will participate in the TDA Annual Conference panel discussion on November 15.

## **Accounting Supervisor Report**

By John Peckham, Wood County Highway Department Accounting Supervisor

HIRC Meeting

### **Revenues**

Revenues are as anticipated in most areas.

In October, we will receive the final GTA payment in the amount of \$624,440.51. With county construction projects winding down, State and Local charges are picking up.

### **Expenses**

Expenses are as anticipated.

Expenses to local governments are picking up as we are completing our County projects and moving on to municipals.

### **Other**

Jake and I met with the Operations Committee regarding our budget. We are requesting an increase of levy compared to the 2022 budget. Roland wrote a letter that I read to the Committee which summarized the reasons that our levy increase was reasonable and needed.

County of Wood  
 DETAILED INCOME STATEMENT W/SUBTOTALS  
 Highway Departmentwide  
 Friday, September 30, 2022

		2022		
	Actual	Budget	Variance	Variance %
<b>REVENUES</b>				
Intergovernmental Revenues				
43531	State Aid-Transportation	\$1,873,321.53	\$2,497,341.00	(\$624,019.47) (24.99%)
43534	State Aid-LRIP	218,258.31	995,000.00	(776,741.69) (78.06%)
	Total Intergovernmental	2,091,579.84	3,492,341.00	(1,400,761.16) (40.11%)
Licenses and Permits				
44101	Utility Permits	26,730.00	16,000.00	10,730.00 67.06%
	Total Licenses and Permits	26,730.00	16,000.00	10,730.00 67.06%
Intergovernmental Charges for Services				
47230	State Charges	827,051.70	982,087.00	(155,035.30) (15.79%)
47231	State Charges-Highway	187,214.52	579,812.00	(392,597.48) (67.71%)
47232	State Charges-Machinery	13,226.70		13,226.70 0.00%
47233	State Charges-Performance Based Maintenance	62,922.26		62,922.26 0.00%
47300	Local Gov Chgs	460,191.20	510,567.00	(50,375.80) (9.87%)
47330	Local Gov Chgs-Transp	1,544,907.33	1,102,945.00	441,962.33 40.07%
47332	Local Gov Chgs-Roads	69,760.92	416,344.00	(346,583.08) (83.24%)
47333	Local Gov Chgs-Bridges	4,287.35	80,996.00	(76,708.65) (94.71%)
	Total Charges to Other Governments	3,169,561.98	3,672,751.00	(503,189.02) (13.70%)
Interdepartmental Charges for Services				
47470	Dept Charges-Highway	1,949,044.76	2,231,470.00	(282,425.24) (12.66%)
	Total Interdepartmental Charges	1,949,044.76	2,231,470.00	(282,425.24) (12.66%)
	Total Intergovernmental Charges for Services	5,118,606.74	5,904,221.00	(785,614.26) (13.31%)
Miscellaneous				
48340	Gain/Loss-Sale of Salvage and Waste	11,788.17	6,700.00	5,088.17 75.94%
48500	Donations	33,001.15		33,001.15 0.00%
48520	Grants/Contribution-ATV Route Signage		20,000.00	(20,000.00) (100.00%)
	Total Miscellaneous	44,789.32	26,700.00	18,089.32 67.75%
Other Financing Sources				
49110	Proceeds from Long-Term Debt		2,500,000.00	(2,500,000.00) (100.00%)
	Total Other Financing Sources		2,500,000.00	(2,500,000.00) (100.00%)
<b>TOTAL REVENUES</b>		<b>7,281,705.90</b>	<b>11,939,262.00</b>	<b>(4,657,556.10) (39.01%)</b>
<b>EXPENDITURES</b>				
Public Works-Highway				
53110	Hwy-Administration	251,064.73	370,297.59	119,232.86 32.20%
53120	Hwy-Engineer	116,140.54	262,643.14	146,502.60 55.78%
53191	Hwy-Other Administration	258,011.97	333,997.09	75,985.12 22.75%
53210	Hwy-Employee Taxes & Benefits	(582,199.63)		582,199.63 0.00%
53220	Hwy-Field Tools	(22,135.88)		22,135.88 0.00%
53230	Hwy-Shop Operations	198,186.40	309,473.49	111,287.09 35.96%
53232	Hwy-Fuel Handling	(16,677.89)	(23,105.00)	(6,427.11) 27.82%
53240	Hwy-Machinery Operations	(804,866.86)	(152,968.72)	651,898.14 (426.16%)
53260	Hwy-Bituminous Ops	198,067.01	228,435.29	30,368.28 13.29%
53262	Hwy-Bituminous Ops	91,991.93		(91,991.93) 0.00%
53266	Hwy-Bituminous Ops	1,469,755.28	1,983,034.65	513,279.37 25.88%
53270	Hwy-Buildings & Grounds	135,174.85	273,351.67	138,176.82 50.55%
53290	Hwy-Salt Brine Operations	(3,236.38)		3,236.38 0.00%
53291	Hwy-Salt Brine Operations	(32,112.20)		32,112.20 0.00%
53281	Hwy-Acquisition of Capital Assets	397,280.09		(397,280.09) 0.00%
53310	Hwy-Maintenance CTHS		22,193.52	22,193.52 100.00%
53311	Hwy-Maint CTHS Patrol Sectn	1,258,928.97	2,861,610.77	1,602,681.80 56.01%
53312	Hwy-Snow Remov	593,119.11	907,384.83	314,265.72 34.63%
53313	Hwy-Maintenance Gang	157,502.95	106,422.57	(51,080.38) (48.00%)
53314	Hwy-Maint Gang-Materials	33,119.77	2,900.00	(30,219.77) (1,042.06%)
53320	Hwy-Maint STHS	843,873.84	982,087.43	138,213.59 14.07%
53323	Hwy-Maint STHS PBM	72,702.49		(72,702.49) 0.00%
53330	Hwy-Local Roads	1,840,879.44	1,102,944.74	(737,934.70) (66.91%)
53340	Hwy-County-Aid Road Construction	156,620.43	469,914.74	313,294.31 66.67%
53341	Hwy-County-Aid Bridge Construction	141,321.03	130,995.91	(10,325.12) (7.88%)
53490	Hwy-State & Local Other Services	488,944.39	550,567.08	61,622.69 11.19%
53491	Hwy-ATV Route Signage	49,772.28		(49,772.28) 0.00%
	Total Public Works-Highway	7,291,228.66	10,722,180.79	3,430,952.13 32.00%
Capital Outlay				

County of Wood  
 DETAILED INCOME STATEMENT W/SUBTOTALS  
 Highway Departmentwide  
 Friday, September 30, 2022

		2022		
		Actual	Budget	Variance      Variance %
57310	Highway Capital Projects	1,742,199.95	2,472,164.57	729,964.62      29.53%
	Total Capital Outlay	1,742,199.95	2,472,164.57	729,964.62      29.53%
TOTAL EXPENDITURES		9,033,428.61	13,194,345.36	4,160,916.75      31.54%
NET INCOME (LOSS) *		(1,751,722.71)	(1,255,083.36)	(496,639.35)      39.57%

## Committee Report

County of Wood

Report of claims for: HIGHWAY

For the period of: AUGUST

For the range of vouchers: 16221670 - 16221957

Voucher	Vendor Name	Nature of Claim	Doc Date	Amount	Paid
16221670	US BANK	P-CARD PURCHASES	08/17/2022	\$2,226.48	P
16221671	BECKER TRUCKING & EXCAVATING INC	AGGREGATES	08/01/2022	\$481.88	P
16221672	CHEMS USERS GROUP	CHEMSPRO ANNUAL CONFERENCE	08/23/2022	\$130.00	P
16221673	HENRY G MEIGS LLC	PG 58-25 OIL FOR HOT MIX	08/18/2022	\$146,756.93	P
16221674	KOLO TRUCKING AND EXCAVATING INC	SAND FOR HOT MIX	08/19/2022	\$6,832.47	P
16221675	MID-STATES EQUIPMENT & SUPPLY	MASTIC PRIMER	05/10/2022	\$2,472.25	P
16221676	MILESTONE MATERIALS	AGGREGATES	08/22/2022	\$14,049.24	P
16221677	STREET SMART RENTALS INC	PARTS	06/07/2022	\$348.28	P
16221678	WATER WORKS & LIGHTING COMM	UTILITIES - HOT MIX	08/15/2022	\$129.41	P
16221679	CITY OF WISCONSIN RAPIDS	SWEEPING	08/15/2022	\$288.04	P
16221680	FLEET TRANSPORTATION LLC	9067 BREAKER	08/10/2022	\$1,238.30	P
16221681	HAAS SONS INC	PULVERIZING	08/16/2022	\$11,081.45	P
16221682	HAAS SONS INC	PULVERIZING	08/18/2022	\$10,792.20	P
16221683	AQUA DAM INC	Aqua Dam	08/25/2022	\$9,057.65	P
16221684	ADAMS COUNTY HIGHWAY DEPT	PAINTING	08/13/2022	\$19,948.67	P
16221685	ADVANCE JANITORIAL SERVICE & SUPPLY	CARPET/FLOOR & CLEANING SVC	08/25/2022	\$597.50	P
16221686	AMAZON CAPITAL SERVICES	OFFICE SUPPLIES	08/31/2022	\$77.41	P
16221687	AT&T-ATLANTA	TELEPHONE (MFLD)	08/21/2022	\$45.03	P
16221688	BARRIENTOS DESIGN & CONSULTING INC	SPACE NEEDS STUDY	08/26/2022	\$6,214.21	P
16221689	BECKER TRUCKING & EXCAVATING INC	AGGREGATES	08/16/2022	\$1,602.62	P
16221690	BECKER TRUCKING & EXCAVATING INC	AGGREGATES	09/06/2022	\$1,653.64	P
16221691	BUREAU OF CORRECTIONAL ENTERPRISES	SIGNS AND SIGN MAKING MATERIAL	08/26/2022	\$136.55	P
16221692	COUNTY MATERIALS CORP	CONCRETE	08/25/2022	\$245.00	P
16221693	CINTAS CORPORATION	CLEANING RUGS AND UNIFORMS	08/01/2022	\$290.43	P
16221694	CINTAS CORPORATION	CLEANING RUGS AND UNIFORMS	08/01/2022	\$290.43	P
16221695	CINTAS CORPORATION	CLEANING RUGS AND UNIFORMS	08/15/2022	\$259.35	P
16221696	CINTAS CORPORATION	CLEANING RUGS AND UNIFORMS	08/22/2022	\$259.35	P
16221697	CINTAS CORPORATION	CLEANING RUGS AND UNIFORMS	08/29/2022	\$259.35	P
16221698	CINTAS CORPORATION	CLEANING RUGS AND UNIFORMS	08/03/2022	\$875.16	P
16221699	CINTAS CORPORATION	CLEANING RUGS AND UNIFORMS	08/10/2022	\$873.39	P
16221700	CINTAS CORPORATION	CLEANING RUGS AND UNIFORMS	08/11/2022	\$133.67	P
16221701	CINTAS CORPORATION	CLEANING RUGS AND UNIFORMS	08/17/2022	\$876.13	P
16221702	CINTAS CORPORATION	CLEANING RUGS AND UNIFORMS	08/24/2022	\$874.36	P
16221703	CINTAS CORPORATION	CLEANING RUGS AND UNIFORMS	08/25/2022	\$133.67	P

HIGHWAY - AUGUST

16221670 - 16221957

Voucher	Vendor Name	Nature of Claim	Doc Date	Amount	Paid
16221704	CINTAS CORPORATION	CLEANING RUGS AND UNIFORMS	08/31/2022	\$887.01	P
16221705	CINTAS CORPORATION	CLEANING RUGS AND UNIFORMS	08/11/2022	\$36.38	P
16221706	CINTAS CORPORATION	CLEANING RUGS AND UNIFORMS	08/25/2022	\$36.38	P
16221707	FAHRNER ASPHALT SEALERS LLC	POLYMER OVERLAYS	08/31/2022	\$27,454.81	P
16221708	EARTH INC	AGGREGATES	08/26/2022	\$468.66	P
16221709	FRONTIER	TELEPHONE - MFLD	08/28/2022	\$61.13	P
16221710	HENRY G MEIGS LLC	OIL FOR HOT MIX	08/24/2022	\$88,859.64	P
16221711	HENRY G MEIGS LLC	OIL FOR HOT MIX	08/30/2022	\$118,289.34	P
16221712	HENRY G MEIGS LLC	OIL FOR HOT MIX	08/31/2022	\$73,329.51	P
16221713	BELTER STEVEN L	RETURN OF PERMIT DEPOSIT	02/07/2022	\$300.00	P
16221714	KOLO TRUCKING AND EXCAVATING INC	HOT MIX SAND	08/31/2022	\$10,360.04	P
16221715	MARSHFIELD UTILITIES	ELECTRIC, WATER, SEWER	08/31/2022	\$155.42	P
16221716	MARSHFIELD UTILITIES	ELECTRIC/WATER/SEWER	08/31/2022	\$239.94	P
16221717	MARSHFIELD UTILITIES	ELECTRIC/WATER/SEWER	08/31/2022	\$56.01	P
16221718	MILESTONE MATERIALS	AGGREGATES	08/25/2022	\$1,742.89	P
16221719	MILESTONE MATERIALS	AGGREGATES	08/26/2022	\$706.56	P
16221720	MILESTONE MATERIALS	AGGREGATES	08/26/2022	\$2,663.92	P
16221721	MILESTONE MATERIALS	AGGREGATES	08/26/2022	\$8,370.47	P
16221722	MILESTONE MATERIALS	AGGREGATES	08/29/2022	\$3,098.68	P
16221723	MILESTONE MATERIALS	AGGREGATES	08/30/2022	\$995.81	P
16221724	MILESTONE MATERIALS	AGGREGATES	08/31/2022	\$1,202.20	P
16221725	PORTAGE COUNTY HIGHWAY DEPT	STATE RMA	08/02/2022	\$622.17	P
16221726	PRECISE MRM LLC	FLAT PLAN USA & GPRS NAF	08/31/2022	\$702.00	P
16221727	PROVISION PARTNERS	DIESEL FUEL AND GASOLINE	08/31/2022	\$89,196.37	P
16221728	RAAB MICHAEL G	RETURN OF PERMIT DEPOSIT	09/01/2022	\$300.00	P
16221729	RHYME (Portage)	COPY MACHINE STAPLES	06/29/2022	\$98.00	P
16221730	ROBERT E LEE & ASSOCIATES INC	ENGINEER DESIGN SERVICES	08/29/2022	\$66.00	P
16221731	SCHIFERL ALAN	RETURN OF PERMIT DEPOSIT	05/12/2022	\$300.00	P
16221732	MITCHELL 1 - SHOPKEY	SOFTWARE SUBSCRIPTION	08/25/2022	\$3,180.00	P
16221733	SOLARUS	TELEPHONE - WR & HOT MIX	09/01/2022	\$146.76	P
16221734	STERNWEIS AND SONS INC	CONCRETE	08/24/2022	\$374.00	P
16221735	SWEENEY EDNAANN	RETURN OF PERMIT DEPOSIT	08/16/2022	\$300.00	P
16221736	WASTE MANAGEMENT	GRABAGE DISPOSAL	09/01/2022	\$182.48	P
16221737	WATER WORKS & LIGHTING COMM	UTILITIES - WR	08/29/2022	\$17.06	P
16221738	WATER WORKS & LIGHTING COMM	UTILITIES - WR	08/29/2022	\$2,280.27	P
16221739	WATER WORKS & LIGHTING COMM	UTILITIES - WR	08/29/2022	\$14.06	P
16221740	WATER WORKS & LIGHTING COMM	UTILITIES - HOT MIX	08/29/2022	\$5,421.63	P
16221741	WATER WORKS & LIGHTING COMM	UTILITIES - BRINE PLANT	08/29/2022	\$336.22	P
16221742	WAUSHARA COUNTY TREASURER	CHIPSEAL SWEEPING	08/23/2022	\$3,685.43	P
16221743	WE ENERGIES	NATURAL GAS - HOT MIX	09/06/2022	\$5,879.18	P
16221744	WE ENERGIES	NATURAL GAS - BRINE PLANT	09/01/2022	\$9.57	P
16221745	WE ENERGIES	NATURAL GAS - WR SHOP	09/01/2022	\$113.68	P
16221746	WE ENERGIES	NATURAL GAS - WR SHOP	09/01/2022	\$23.03	P
16221747	WHIRLWIND SWEEPING WI INC	SWEEPING/MILLING	08/31/2022	\$3,010.00	P



## HIGHWAY - AUGUST

16221670 - 16221957

Voucher	Vendor Name	Nature of Claim	Doc Date	Amount	Paid
16221748	WK CONSTRUCTION CO INC	MILLING CTH G	09/09/2022	\$17,448.00	P
16221749	ACE HARDWARE	PARTS	08/08/2022	\$50.16	P
16221750	ADVANCE AUTO PARTS (Wis Rapids)	PARTS	08/01/2022	(\$70.00)	P
16221751	ADVANCE AUTO PARTS (Wis Rapids)	PARTS	08/01/2022	\$59.30	P
16221752	ADVANCE AUTO PARTS (Wis Rapids)	PARTS	08/01/2022	\$136.29	P
16221753	ADVANCE AUTO PARTS (Wis Rapids)	PARTS	08/01/2022	\$136.29	P
16221754	ADVANCE AUTO PARTS (Wis Rapids)	PARTS	08/01/2022	\$88.79	P
16221755	ADVANCE AUTO PARTS (Wis Rapids)	PARTS	08/02/2022	(\$43.66)	P
16221756	ADVANCE AUTO PARTS (Wis Rapids)	PARTS	08/02/2022	\$126.72	P
16221757	ADVANCE AUTO PARTS (Wis Rapids)	PARTS	08/02/2022	\$132.45	P
16221758	ADVANCE AUTO PARTS (Wis Rapids)	PARTS	08/02/2022	\$311.98	P
16221759	ADVANCE AUTO PARTS (Wis Rapids)	PARTS	08/02/2022	\$134.93	P
16221760	ADVANCE AUTO PARTS (Wis Rapids)	PARTS	08/03/2022	(\$70.00)	P
16221761	ADVANCE AUTO PARTS (Wis Rapids)	PARTS	08/03/2022	(\$88.79)	P
16221762	ADVANCE AUTO PARTS (Wis Rapids)	PARTS	08/03/2022	\$18.94	P
16221763	ADVANCE AUTO PARTS (Wis Rapids)	PARTS	08/03/2022	\$223.43	P
16221764	ADVANCE AUTO PARTS (Wis Rapids)	PARTS	08/03/2022	\$15.80	P
16221765	ADVANCE AUTO PARTS (Wis Rapids)	PARTS	08/03/2022	\$20.22	P
16221766	ADVANCE AUTO PARTS (Wis Rapids)	PARTS	08/03/2022	\$38.82	P
16221767	ADVANCE AUTO PARTS (Wis Rapids)	PARTS	08/03/2022	\$14.95	P
16221768	ADVANCE AUTO PARTS (Wis Rapids)	PARTS	08/08/2022	\$127.87	P
16221769	ADVANCE AUTO PARTS (Wis Rapids)	PARTS	08/08/2022	\$22.00	P
16221770	ADVANCE AUTO PARTS (Wis Rapids)	PARTS	08/09/2022	\$284.42	P
16221771	ADVANCE AUTO PARTS (Wis Rapids)	PARTS	08/10/2022	(\$44.00)	P
16221772	ADVANCE AUTO PARTS (Wis Rapids)	PARTS	08/10/2022	\$5.14	P
16221773	ADVANCE AUTO PARTS (Wis Rapids)	PARTS	08/10/2022	\$5.14	P
16221774	ADVANCE AUTO PARTS (Wis Rapids)	PARTS	08/10/2022	\$33.68	P
16221775	ADVANCE AUTO PARTS (Wis Rapids)	PARTS	08/10/2022	\$32.34	P
16221776	ADVANCE AUTO PARTS (Wis Rapids)	PARTS	08/12/2022	\$18.96	P
16221777	ADVANCE AUTO PARTS (Wis Rapids)	PARTS	08/15/2022	(\$10.28)	P
16221778	ADVANCE AUTO PARTS (Wis Rapids)	PARTS	08/15/2022	\$108.54	P
16221779	ADVANCE AUTO PARTS (Wis Rapids)	PARTS	08/16/2022	\$147.05	P
16221780	ADVANCE AUTO PARTS (Wis Rapids)	PARTS	08/16/2022	\$59.76	P
16221781	ADVANCE AUTO PARTS (Wis Rapids)	PARTS	08/17/2022	(\$8.23)	P
16221782	ADVANCE AUTO PARTS (Wis Rapids)	PARTS	08/17/2022	\$22.00	P
16221783	ADVANCE AUTO PARTS (Wis Rapids)	PARTS	08/17/2022	\$22.70	P
16221784	ADVANCE AUTO PARTS (Wis Rapids)	PARTS	08/17/2022	\$15.38	P
16221785	ADVANCE AUTO PARTS (Wis Rapids)	PARTS	08/18/2022	\$87.26	P
16221786	ADVANCE AUTO PARTS (Wis Rapids)	PARTS	08/22/2022	\$153.37	P
16221787	ADVANCE AUTO PARTS (Wis Rapids)	PARTS	08/22/2022	\$334.18	P
16221788	ADVANCE AUTO PARTS (Wis Rapids)	PARTS	08/23/2022	\$106.94	P
16221789	ADVANCE AUTO PARTS (Wis Rapids)	PARTS	08/23/2022	\$14.07	P
16221790	ADVANCE AUTO PARTS (Wis Rapids)	PARTS	08/23/2022	\$31.31	P
16221791	ADVANCE AUTO PARTS (Wis Rapids)	PARTS	08/23/2022	\$6.47	P

## HIGHWAY - AUGUST

16221670 - 16221957

Voucher	Vendor Name	Nature of Claim	Doc Date	Amount	Paid
16221792	ADVANCE AUTO PARTS (Wis Rapids)	PARTS	08/23/2022	\$100.24	P
16221793	ADVANCE AUTO PARTS (Wis Rapids)	PARTS	08/24/2022	\$36.47	P
16221794	ADVANCE AUTO PARTS (Wis Rapids)	PARTS	08/24/2022	\$23.10	P
16221795	ADVANCE AUTO PARTS (Wis Rapids)	PARTS	08/24/2022	\$2.79	P
16221796	ADVANCE AUTO PARTS (Wis Rapids)	PARTS	08/24/2022	\$73.59	P
16221797	ADVANCE AUTO PARTS (Wis Rapids)	PARTS	08/24/2022	\$22.00	P
16221798	ADVANCE AUTO PARTS (Wis Rapids)	PARTS	08/24/2022	\$111.77	P
16221799	ADVANCE AUTO PARTS (Wis Rapids)	PARTS	08/25/2022	\$5.43	P
16221800	ADVANCE AUTO PARTS (Wis Rapids)	PARTS	08/25/2022	\$9.45	P
16221801	ADVANCE AUTO PARTS (Wis Rapids)	PARTS	08/29/2022	\$12.07	P
16221802	ADVANCE AUTO PARTS (Wis Rapids)	PARTS	08/29/2022	(\$6.47)	P
16221803	ADVANCE AUTO PARTS (Wis Rapids)	PARTS	08/29/2022	\$108.12	P
16221804	ADVANCE AUTO PARTS (Wis Rapids)	PARTS	08/30/2022	\$435.32	P
16221805	ADVANCE AUTO PARTS (Wis Rapids)	PARTS	08/31/2022	\$62.20	P
16221806	ADVANCE AUTO PARTS (Wis Rapids)	PARTS	08/31/2022	\$119.00	P
16221807	APPLIED INDUSTRIAL TECHNOLOGY	PARTS	08/01/2022	\$57.20	P
16221808	APPLIED INDUSTRIAL TECHNOLOGY	PARTS	08/09/2022	\$47.33	P
16221809	APPLIED INDUSTRIAL TECHNOLOGY	PARTS	08/11/2022	\$174.43	P
16221810	APPLIED INDUSTRIAL TECHNOLOGY	PARTS	08/16/2022	\$0.37	P
16221811	APPLIED INDUSTRIAL TECHNOLOGY	PARTS	08/16/2022	\$2.59	P
16221812	APPLIED INDUSTRIAL TECHNOLOGY	PARTS	08/18/2022	\$9.99	P
16221813	APPLIED INDUSTRIAL TECHNOLOGY	PARTS	08/18/2022	\$4.44	P
16221814	APPLIED INDUSTRIAL TECHNOLOGY	PARTS	08/18/2022	\$72.81	P
16221815	APPLIED INDUSTRIAL TECHNOLOGY	PARTS	08/30/2022	\$1.96	P
16221816	APPLIED MAINTENANCE SUPPLIES & SOLUTIONS	PARTS	08/25/2022	\$1,178.87	P
16221817	ARING EQUIPMENT COMPANY	ROLLER REPAIR	08/04/2022	\$1,114.00	P
16221818	ARING EQUIPMENT COMPANY	PARTS	08/15/2022	\$18.38	P
16221819	ARING EQUIPMENT COMPANY	PARTS	08/17/2022	\$120.72	P
16221820	ARING EQUIPMENT COMPANY	PARTS	08/22/2022	\$939.24	P
16221821	ARING EQUIPMENT COMPANY	PARTS	08/24/2022	\$88.22	P
16221822	ARING EQUIPMENT COMPANY	PARTS	08/24/2022	\$737.20	P
16221823	ARING EQUIPMENT COMPANY	PARTS	08/24/2022	\$338.67	P
16221824	ARING EQUIPMENT COMPANY	PARTS	08/24/2022	\$96.63	P
16221825	NORTH CENTRAL UTILITY OF WI	PARTS	08/03/2022	\$258.66	P
16221826	NORTH CENTRAL UTILITY OF WI	PARTS	08/04/2022	\$11.50	P
16221827	NORTH CENTRAL UTILITY OF WI	PARTS	08/04/2022	\$71.37	P
16221828	NORTH CENTRAL UTILITY OF WI	PARTS	08/05/2022	\$23.79	P
16221829	NORTH CENTRAL UTILITY OF WI	PARTS	08/09/2022	\$60.69	P
16221830	NORTH CENTRAL UTILITY OF WI	PARTS	08/10/2022	\$92.40	P
16221831	NORTH CENTRAL UTILITY OF WI	PARTS	08/11/2022	\$1,302.72	P
16221832	NORTH CENTRAL UTILITY OF WI	PARTS	08/15/2022	\$443.76	P
16221833	NORTH CENTRAL UTILITY OF WI	PARTS	08/23/2022	\$377.38	P
16221834	BATTERIES PLUS BULBS	PARTS	08/23/2022	\$37.44	P
16221835	BATTERIES PLUS BULBS	PARTS	08/25/2022	\$87.25	P

## HIGHWAY - AUGUST

16221670 - 16221957

Voucher	Vendor Name	Nature of Claim	Doc Date	Amount	Paid
16221836	BAUER BUILT INC	TIRES	08/09/2022	\$643.50	P
16221837	BROOKS TRACTOR COMPANY	PARTS	08/15/2022	\$524.54	P
16221838	BURNS INDUSTRIAL SUPPLY CO INC	PARTS	08/16/2022	\$394.96	P
16221839	CMK STARTER AND ALTERNATOR REBUILD LLC	PARTS	08/17/2022	\$700.00	P
16221840	CENTRAL CULVERT & SUPPLY LLC	CULVERTS	08/15/2022	\$389.61	P
16221841	CENTRAL CULVERT & SUPPLY LLC	CULVERTS	08/29/2022	\$4,985.50	P
16221842	CENTRAL CULVERT & SUPPLY LLC	CULVERTS	08/31/2022	\$20,500.68	P
16221843	CRESCENT ELECTRIC SUPPLY CO	PARTS	08/29/2022	\$17.61	P
16221844	CRESCENT ELECTRIC SUPPLY CO	PARTS	08/31/2022	\$77.11	P
16221845	DECKER SUPPLY CO	PARTS	08/11/2022	\$970.00	P
16221846	DECKER SUPPLY CO	PARTS	08/19/2022	\$3,198.14	P
16221847	FASTENAL COMPANY	PARTS	08/11/2022	\$568.12	P
16221848	FASTENAL COMPANY	PARTS	08/18/2022	\$33.88	P
16221849	FLEETPRIDE	PARTS	08/02/2022	\$396.40	P
16221850	GENERAL COMMUNICATIONS INC	PARTS	08/31/2022	\$64.00	P
16221851	HAAS BUILDERS SUPPLY INC	BUILDING MATERIALS	08/15/2022	\$172.90	P
16221852	HAAS BUILDERS SUPPLY INC	BUILDING MATERIALS	08/15/2022	\$15.00	P
16221853	HALRON LUBRICANTS INC	PARTS	08/09/2022	\$316.34	P
16221854	HALRON LUBRICANTS INC	PARTS	08/11/2022	\$1,271.00	P
16221855	HALRON LUBRICANTS INC	PARTS	08/12/2022	\$2,128.82	P
16221856	HALRON LUBRICANTS INC	PARTS	08/12/2022	(\$80.00)	P
16221857	HALRON LUBRICANTS INC	PARTS	08/19/2022	\$632.68	P
16221858	HALRON LUBRICANTS INC	PARTS	08/19/2022	(\$40.00)	P
16221859	HOME DEPOT CREDIT SERV (Highway)	PARTS	09/05/2022	\$199.96	P
16221860	JOHN DEERE FINANCIAL	PARTS	08/09/2022	\$328.26	P
16221861	JOHN DEERE FINANCIAL	PARTS	08/16/2022	\$325.25	P
16221862	JOHN DEERE FINANCIAL	PARTS	08/17/2022	\$321.25	P
16221863	JOHN DEERE FINANCIAL	PARTS	08/18/2022	\$1,472.05	P
16221864	JFTCO INC	PARTS	08/02/2022	\$8.68	P
16221865	JFTCO INC	PARTS	08/03/2022	\$93.48	P
16221866	JFTCO INC	PARTS	08/09/2022	\$94.72	P
16221867	JFTCO INC	PARTS	08/24/2022	\$163.40	P
16221868	JFTCO INC	LOADER MAINTENANCE	08/22/2022	\$1,516.53	P
16221869	JX ENTERPRISES INC	PARTS	08/09/2022	\$42.28	P
16221870	KRIETE TRUCK CENTER	PARTS	08/01/2022	\$33.76	P
16221871	LA TRUCKING	HIRED TRUCKS	08/31/2022	\$7,100.41	P
16221872	MID-STATE TRUCK SERVICE INC	PARTS	08/03/2022	\$1,161.75	P
16221873	MID-STATE TRUCK SERVICE INC	PARTS	08/10/2022	\$210.16	P
16221874	MID-STATE TRUCK SERVICE INC	PARTS	08/10/2022	\$798.42	P
16221875	MID-STATE TRUCK SERVICE INC	PARTS	08/23/2022	\$131.74	P
16221876	MID-STATE TRUCK SERVICE INC	PARTS	08/24/2022	\$21.79	P
16221877	MID-STATE TRUCK SERVICE INC	PARTS	08/26/2022	\$779.51	P
16221878	MID-STATE TRUCK SERVICE INC	PARTS	08/29/2022	\$24.39	P
16221879	MID-STATE TRUCK SERVICE INC	PARTS	08/29/2022	\$71.57	P

## HIGHWAY - AUGUST

16221670 - 16221957

Voucher	Vendor Name	Nature of Claim	Doc Date	Amount	Paid
16221880	MID-STATE TRUCK SERVICE INC	PARTS	08/30/2022	\$170.06	P
16221881	MILLER-BRADFORD & RISBERG INC	PARTS	08/15/2022	\$1,013.98	P
16221882	MISSISSIPPI WELDERS SUPPLY CO INC	WELDING SUPPLIES	08/18/2022	\$363.61	P
16221883	MISSISSIPPI WELDERS SUPPLY CO INC	WELDING SUPPLIES	08/31/2022	\$234.36	P
16221884	MONROE TRUCK EQUIPMENT	PARTS	08/10/2022	\$3,412.94	P
16221885	NAPA CENTRAL WI AUTO PARTS	PARTS	08/02/2022	\$35.97	P
16221886	NAPA CENTRAL WI AUTO PARTS	PARTS	08/03/2022	\$32.97	P
16221887	NAPA CENTRAL WI AUTO PARTS	PARTS	08/08/2022	\$12.49	P
16221888	NAPA CENTRAL WI AUTO PARTS	PARTS	08/09/2022	\$4.76	P
16221889	NAPA CENTRAL WI AUTO PARTS	PARTS	08/17/2022	\$30.09	P
16221890	NEKOOSA CORPORATION	PARTS	08/15/2022	\$260.10	P
16221891	POMP'S TIRE SERVICE INC - Milw	TIRES	08/08/2022	\$6.00	P
16221892	POMP'S TIRE SERVICE INC - Milw	TIRES	08/10/2022	\$437.10	P
16221893	RUBBER INC	PARTS	08/31/2022	\$1,376.97	P
16221894	SCHILL TRUCKING INC	PARTS	08/31/2022	\$6,755.56	P
16221895	SCHILLING SUPPLY COMPANY	SHOP SUPPLIES	08/30/2022	\$531.73	P
16221896	SERWE IMPLEMENT MUNICIPAL SALES CO LLC	PARTS	08/31/2022	\$219.64	P
16221897	TEAM MATTHEWS	TIRES	08/02/2022	\$226.59	P
16221898	TJ'S AUTO & COLLISION REPAIR	PARTS	08/22/2022	\$140.00	P
16221899	TOOL SHED	SHOP TOOLS	08/15/2022	\$47.85	P
16221900	TRACTOR SUPPLY CREDIT PLAN	PARTS	08/30/2022	\$465.69	P
16221901	TRUCK COUNTRY OF WISCONSIN	PARTS	08/10/2022	\$223.78	P
16221902	TRUCK COUNTRY OF WISCONSIN	PARTS	08/10/2022	\$73.43	P
16221903	TRUCK COUNTRY OF WISCONSIN	PARTS	08/12/2022	\$73.43	P
16221904	TRUCK COUNTRY OF WISCONSIN	PARTS	08/16/2022	\$676.46	P
16221905	TRUCK COUNTRY OF WISCONSIN	PARTS	08/16/2022	(\$176.60)	P
16221906	TRUCK COUNTRY OF WISCONSIN	PARTS	08/16/2022	\$226.38	P
16221907	TRUCK COUNTRY OF WISCONSIN	PARTS	08/19/2022	\$45.68	P
16221908	TRUCK COUNTRY OF WISCONSIN	PARTS	08/23/2022	(\$86.40)	P
16221909	ISTATE TRUCK CENTER	PARTS	08/01/2022	\$50.76	P
16221910	ISTATE TRUCK CENTER	PARTS	08/01/2022	\$162.34	P
16221911	ISTATE TRUCK CENTER	PARTS	08/01/2022	\$72.49	P
16221912	ISTATE TRUCK CENTER	PARTS	08/02/2022	(\$1,940.64)	P
16221913	ISTATE TRUCK CENTER	PARTS	08/03/2022	\$95.16	P
16221914	ISTATE TRUCK CENTER	PARTS	08/03/2022	\$3,013.94	P
16221915	ISTATE TRUCK CENTER	PARTS	08/03/2022	\$22.27	P
16221916	ISTATE TRUCK CENTER	PARTS	08/03/2022	(\$641.29)	P
16221917	ISTATE TRUCK CENTER	PARTS	08/03/2022	\$232.65	P
16221918	ISTATE TRUCK CENTER	PARTS	08/10/2022	\$39.79	P
16221919	ISTATE TRUCK CENTER	PARTS	08/10/2022	\$434.16	P
16221920	ISTATE TRUCK CENTER	PARTS	08/12/2022	\$97.14	P
16221921	ISTATE TRUCK CENTER	PARTS	08/15/2022	\$133.18	P
16221922	ISTATE TRUCK CENTER	PARTS	08/15/2022	\$7.67	P
16221923	ISTATE TRUCK CENTER	PARTS	08/15/2022	\$258.47	P

## HIGHWAY - AUGUST

16221670 - 16221957

Voucher	Vendor Name	Nature of Claim	Doc Date	Amount	Paid
16221924	ISTATE TRUCK CENTER	PARTS	08/15/2022	\$407.73	P
16221925	ISTATE TRUCK CENTER	PARTS	08/16/2022	\$46.46	P
16221926	ISTATE TRUCK CENTER	PARTS	08/16/2022	\$32.75	P
16221927	ISTATE TRUCK CENTER	PARTS	08/16/2022	\$91.46	P
16221928	ISTATE TRUCK CENTER	PARTS	08/16/2022	\$29.80	P
16221929	ISTATE TRUCK CENTER	PARTS	08/16/2022	\$50.50	P
16221930	ISTATE TRUCK CENTER	PARTS	08/16/2022	\$369.20	P
16221931	ISTATE TRUCK CENTER	PARTS	08/16/2022	\$50.00	P
16221932	ISTATE TRUCK CENTER	PARTS	08/17/2022	\$29.80	P
16221933	ISTATE TRUCK CENTER	PARTS	08/18/2022	\$54.28	P
16221934	ISTATE TRUCK CENTER	PARTS	08/18/2022	\$160.66	P
16221935	ISTATE TRUCK CENTER	PARTS	08/19/2022	\$110.90	P
16221936	ISTATE TRUCK CENTER	PARTS	08/22/2022	\$20.00	P
16221937	ISTATE TRUCK CENTER	PARTS	08/23/2022	\$36.90	P
16221938	ISTATE TRUCK CENTER	PARTS	08/24/2022	\$126.51	P
16221939	ISTATE TRUCK CENTER	PARTS	08/25/2022	\$12.88	P
16221940	ISTATE TRUCK CENTER	PARTS	08/25/2022	\$155.10	P
16221941	ISTATE TRUCK CENTER	PARTS	08/26/2022	\$1,712.55	P
16221942	ISTATE TRUCK CENTER	PARTS	08/30/2022	\$758.20	P
16221943	ISTATE TRUCK CENTER	PARTS	08/31/2022	\$256.77	P
16221944	ISTATE TRUCK CENTER	PARTS	08/31/2022	\$527.60	P
16221945	ISTATE TRUCK CENTER	PARTS	08/31/2022	\$348.68	P
16221946	ISTATE TRUCK CENTER	PARTS	08/31/2022	\$63.59	P
16221947	ISTATE TRUCK CENTER	PARTS	08/31/2022	\$812.62	P
16221948	ISTATE TRUCK CENTER	PARTS	08/26/2022	\$155.10	P
16221949	V & H AUTOMOTIVE	PARTS	08/18/2022	\$384.88	P
16221950	V & H AUTOMOTIVE	PARTS	08/18/2022	\$19.13	P
16221951	WEYERS EQUIPMENT INC	PARTS	08/05/2022	\$475.87	P
16221952	WHEELERS OF WISCONSIN RAPIDS	PARTS	08/22/2022	\$81.55	P
16221953	WISCONSIN HYDRAULICS INC	PARTS	08/05/2022	\$2,138.10	P
16221954	WISCONSIN HYDRAULICS INC	PARTS	08/01/2022	\$508.15	P
16221955	WISCONSIN VALLEY BUILDING PRODUCTS	PARTS	08/26/2022	\$57.40	P
16221956	ZARNOTH BRUSH WORKS INC	PARTS	08/30/2022	\$1,440.00	P
16221957	ZEP MANUFACTURING CO	SHOP SUPPLIES	08/19/2022	(Voided)	P
<b>Grand Total:</b>				<b>\$809,426.97</b>	

Signatures

Committee Chair: \_\_\_\_\_

Committee Member: \_\_\_\_\_

Committee Member: \_\_\_\_\_

Committee Member: \_\_\_\_\_

Committee Member: \_\_\_\_\_

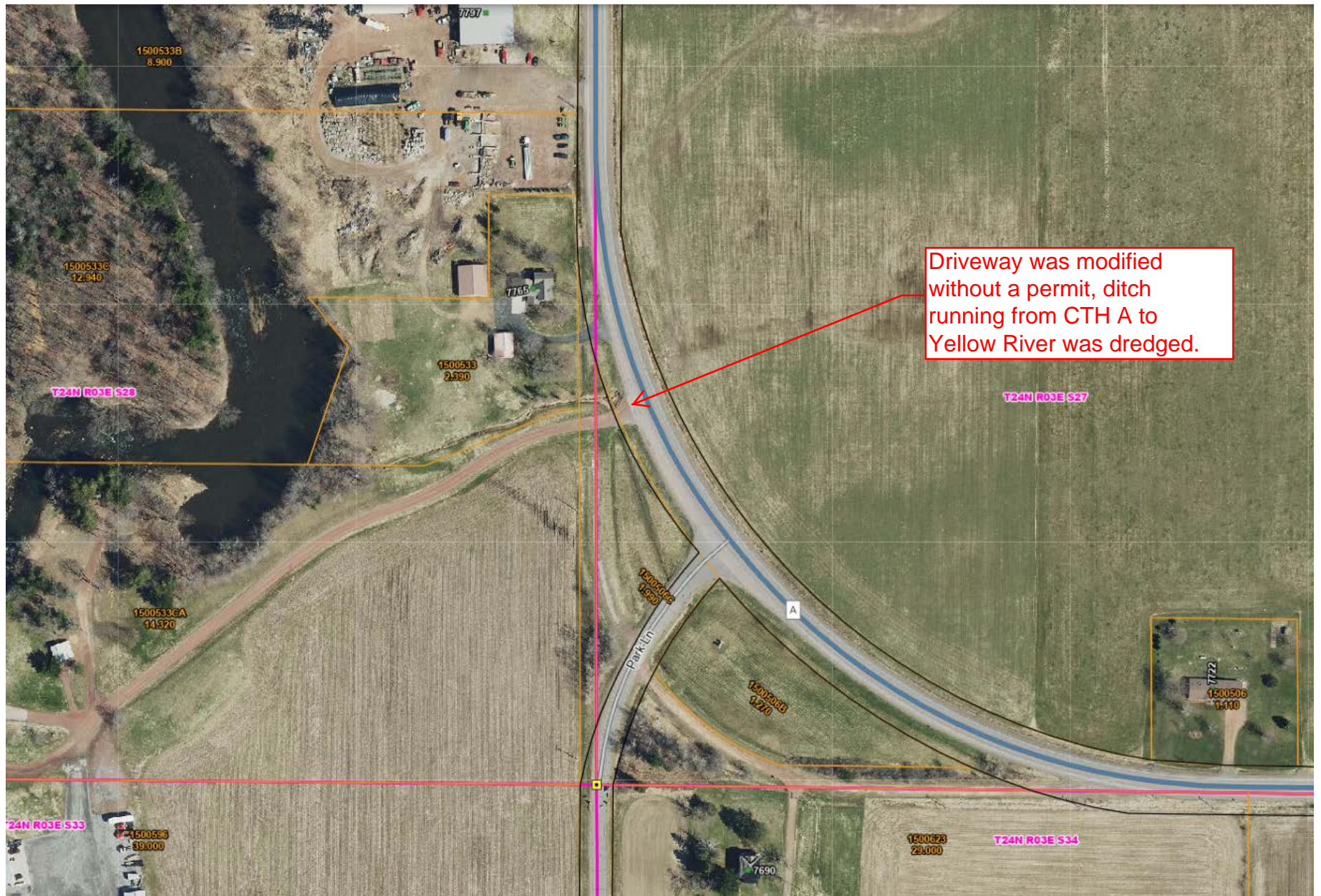
Committee Member: \_\_\_\_\_

Committee Member: \_\_\_\_\_

Committee Member: \_\_\_\_\_

Committee Member: \_\_\_\_\_







# Parks & Forestry Department Reports

October 6, 2022

## **Director Report, by Chad Schooley**

- Overseeing Powers Bluff bike trail construction project. Facilitated archeological monitoring for trail construction in “Areas of Concern”. The construction crew is done for the season. They will be returning next spring to complete the 2 downhill sections of the trail. Once signage is installed, the trail will be open to the public.
- Continue working on permit applications for multi-use trail and entrance road/parking lot at Powers Bluff.
- I will bring information regarding the Powers Bluff trailhead shelter building to the meeting.
- Applied for and received REDI grant from CEED for \$15,000 for informational/interpretive signage at Powers Bluff.
- **Special Use Permits**
  - None at this time

## **Maintenance Program Supervisor Report, by Dan Vollert**

### **Construction Projects**

- South Park Shop Natural Gas Furnace Installed by Ron’s Refridgeration. Waiting on electrician for final hookup.
- Dexter Park’s old wood fence has been disassembled and taken down due to rotting of old wooden structure. New wood fence project is started and concrete slab to be poured possibly this fall. Car Port structure to be purchased in the spring of 2023.
- Pittsville Business Kiosks/signs at Dexter and North Parks being installed on concrete pads.
- Concrete pads poured for Lifejacket Kiosks/signs at Dexter Park.
- Concrete approach upgrade around Group Camping Toilet Building, Loops 2 & 3 vault toilets at Dexter Park.
- Concrete bench slabs at Dexter and NEPCO Parks being put in.

### **Maintenance Operations**

- Upgraded dam operation system installed at Lake Wazeecha and Dexter Dam.
- NP Puff Creek Culvert Crossing Concrete repaired by Highway Dept.
- NP Disc golf parking lot reshaped and paving.
- Camppad upgrades at all three campgrounds. Releveling, recycled blacktop, etc.
- Looking at Playground options for NEPCO.
- General Park upkeep: lawn mowing, litter pickup, bathroom and shelter cleaning at all park locations
- South Park/ NEPCO road and walk trail shouldering.
- Dead tree removal and firewood processing, hauling, etc.
- Completed first Wisconsin Surplus Auction.



## **Employee Matters**

- LTE's (Summer Help) finished up at all three parks for the summer.
- FTE Open Enrollment and Safety Training in October.
- Chainsaw Training October 14 for new employees.
- Troy Holford is our new Floating Park Maintenance Worker and moving around to all three shop locations as needed.

## **Snowmobile/ATV**

- ATV/UTV access to County Roads effective June 30, 2022
- Updating Wood County ATV Map.
- Attended first AWSC meeting at Sherriland Ballroom on Monday, Sept. 5. Handed out easement, insurance, and board update paperwork. New snowmobile trail maps in the process of being updated.
- Moving along with DQ Farms snowmobile bridge replacement project. Culverts set and finishing up with riprapping and shoreline stabilization. Highway bridge crew is doing the installation.
- Auburndale, and Rudolph-Plum Road snowmobile bridge projects-grant applications, permits, etc. All three grant applications were in before April 15 deadline. Waiting on Grant Approval.
- DNR Permits were granted for a Clear Span Bridge and Wetland Disturbance for Hay Creek ATV trail project. DNR Soil Erosion Permit is submitted. H & H Study from Jewell Engineering is completed for project. Working with Planning and Zoning on getting Floodplain permit.

## **Office Supervisor Report, by Sandra Green**

### **Office:**

- Printed and sent out Wellness materials to the field staff.
- Issued several violations. Received several violation revenues as well.
- Posted news releases and announcements on Facebook, website and Instagram.
- Continue to work on the new camping/shelter reservation system w/updates, revisions, etc.
- Continuing to assist training for Dan Vollert, introducing him to the Snowmobile/ATV reimbursement process for the clubs and processing entries in SNARS.
- Completed Snowmobile and ATV State Aid reimbursement paperwork.
- Continue work on "HOW TO" for cross training between myself and the Administrative Assistant in case one of us is out on extended leave.
- Sue Potocki trained me on vouchers and bill processing.
- Began work on revamping the annual brochure for Parks & Forestry / 2023.
- Attended Webex meeting with reservation system vendor and C. Schooley to discuss "Fast Pass" options for all passes and permits.
- Attended meeting with Finance to discuss Sales Tax Log procedures and policy.
- Created "discount code" in reservation system for our "Honor" special we ran in September.
- Worked with HR to schedule the Medical First Responder position on 10/10/22.
- Worked on PAYPAL dispute case which was resolved w/the customer.
- Handled several issues within the parks regarding rangers and hosts.
- Attended "Office Employee Parks Tour" on September 20<sup>th</sup>.

### **Forestry:**

- Weekly timber sale billing and processing of woodcutting permit revenues.

## **Forest Administrator Report, by Fritz Schubert**

- Timber Sales: Currently One active timber sales: scaled wood, job site inspections, routine timber sale administration.
- Timber sale establishment, compartments 45, 47,77.
- Began oversight and work on Hazelnut Trail ditch cleaning project. Worked with logger and cranberry grower on first pahse of operations which involve tree removal and dike leveling. Hazelnut Trail was temporarily closed to vehicular traffic and ATV trail was closed for safety reasons.
- Worked with DNR personnel and completed anchor chain TSI/site prep project.
- Began Site prep project along Seneca Road using DNR heavy dozer and roller-chopper.
- Attended WCFA fall conference.
- Forestry Technician: Shooting range clean up, mowed shooting range, moved machinery and worked on Powers Bluff Utility road, culvert improvements, multi-use trail. Fueled DNR dozers on site prep projects. Operated DNR heavy dozer/roller-chopper.

# Committee Report

County of Wood

Report of claims for: PARKS & FORESTRY DEPT.

For the period of: SEPTEMBER (OCT. HIRC)

For the range of vouchers: 21220659 -  
21220754

Voucher	Vendor Name	Nature of Claim	Doc Date	Amount	Paid
21220659	AMAZON CAPITAL SERVICES	Steel Sign Posts	09/01/2022	\$1,032.40	P
21220660	AMAZON CAPITAL SERVICES	Beacon Lightbars Plow Trucks-DP & NP	10/06/2022	\$128.68	P
21220661	BEAVER CREEK NURSERY & LANDSCAPING LLC	Lawn Mowing-July 22 at NP & DP	10/06/2022	\$6,048.00	P
21220662	BOHN TRUCKING & EXCAVATING INC	Crushed Rock Base - SP	10/06/2022	\$702.10	P
21220663	COUNTY MATERIALS CORP	Business Kiosk Concrete Pads-DP	10/06/2022	\$798.00	P
21220664	FERGUSON ENTERPRISES LLC	Shower Building Supplies-SP	10/06/2022	\$235.21	P
21220665	MENARDS-MARSHFIELD	Assorted Supplies NP	09/01/2022	\$180.05	P
21220666	STAPLES ADVANTAGE	Office Supplies	09/01/2022	\$7.96	P
21220667	STAPLES ADVANTAGE	Office Supplies	10/06/2022	\$120.38	P
21220668	STAPLES ADVANTAGE	Office Supplies	10/06/2022	\$35.76	P
21220669	ACE HARDWARE	Supplies for SP	09/07/2022	\$16.15	P
21220670	ACE HARDWARE	Duplicate Keys for SP	09/07/2022	\$12.95	P
21220671	ACE HARDWARE	Camper Dump Station Supplies-SP	09/07/2022	\$35.57	P
21220672	AMAZON CAPITAL SERVICES	Dog Waste Bags-SP	09/07/2022	\$153.08	P
21220673	AMAZON CAPITAL SERVICES	Tools for Forestry Shop	09/07/2022	\$79.97	P
21220674	CENTRAL WI ATV RIDERS INC	Reimburse for ATV Maintenance	09/07/2022	\$6,204.00	P
21220675	FERGUSON ENTERPRISES LLC	Nepco Shelter Supplies	09/07/2022	\$76.63	P
21220676	LAKESIDE OASIS LLC	Gas for DP and Forestry	09/07/2022	\$1,446.95	P
21220677	MENARDS-MARSHFIELD	Concrete Mix-NP Business Kiosk	09/07/2022	\$100.88	P
21220678	PITTSVILLE FARM & HOME CENTER	Supplies for DP	09/07/2022	\$8.16	P
21220679	PITTSVILLE FARM & HOME CENTER	Supplies for DP	09/07/2022	\$13.88	P
21220680	PITTSVILLE FARM & HOME CENTER	Grass Seed for NP	09/07/2022	\$18.87	P
21220681	PITTSVILLE FARM & HOME CENTER	Oil for D3 - Forestry	09/07/2022	\$89.58	P
21220682	PITTSVILLE FARM & HOME CENTER	Wasp Killer for DP	09/07/2022	\$101.88	P
21220683	PITTSVILLE FARM & HOME CENTER	Concrete Supplies for DP	09/07/2022	\$48.46	P
21220684	PITTSVILLE FARM & HOME CENTER	Concrete Mix for DP	09/07/2022	\$31.96	P
21220685	PITTSVILLE FARM & HOME CENTER	Concrete Mix for DP	09/07/2022	\$31.96	P
21220686	PITTSVILLE FARM & HOME CENTER	Supplies-DP Camp Ranger	09/07/2022	\$113.97	P
21220687	PITTSVILLE FARM & HOME CENTER	Supplies for DP	09/07/2022	\$11.92	P
21220688	POWER PAC INC	Supplies for Mower-NP	09/07/2022	\$53.78	P
21220689	ROCK SOLID TRAIL CONTRACTING	PB MultiUse Trail Construction	09/07/2022	\$106,263.75	P
21220690	WATER WORKS & LIGHTING COMM	Electric Service for SP Shop	09/07/2022	\$65.49	P
21220691	WATER WORKS & LIGHTING COMM	Electric Service for SP Dam	09/07/2022	\$21.22	P
21220692	WATER WORKS & LIGHTING COMM	Electric Srv-SP Shelters	09/07/2022	\$58.87	P
21220693	WATER WORKS & LIGHTING COMM	Electric Srv-Cabin, Host, Etc.	09/07/2022	\$296.36	P
21220694	WATER WORKS & LIGHTING COMM	Electric Srv-2nd Loop at SP	09/07/2022	\$62.33	P
21220695	WATER WORKS & LIGHTING COMM	Electric Service - SP Showers	09/07/2022	\$255.36	P
21220696	WATER WORKS & LIGHTING COMM	Electric Srv-White Beach Pavilion	09/07/2022	\$71.23	P

PARKS & FORESTRY DEPT. - SEPTEMBER  
(OCT. HIRC)

21220659 - 21220754

21220697	WATER WORKS & LIGHTING COMM	Electric Srv-1st Loop Sites-SP	09/07/2022	\$1,056.11	P
21220698	WATER WORKS & LIGHTING COMM	Electric Srv-RSBP/SP	09/07/2022	\$228.68	P
21220699	WATER WORKS & LIGHTING COMM	Electric Srv-2nd Loop Sites-SP	09/07/2022	\$590.59	P
21220700	WATER WORKS & LIGHTING COMM	Electric Srv-3rd Loop Sites-SP	09/07/2022	\$712.03	P
21220701	WE ENERGIES	Gas Service for SP	09/07/2022	\$71.32	P
21220702	ADVANCE AUTO PARTS (Atlanta GA)	Golf Cart Lights -SP	09/15/2022	\$27.02	P
21220703	ALLIANT ENERGY/ WP&L	Electric ATV Shelter	09/15/2022	\$24.30	P
21220704	AMAZON CAPITAL SERVICES	JD Mower Blades	09/15/2022	\$87.00	P
21220705	BUDS CORNER MART	Gas Vehicles-Equipment-DP	09/15/2022	\$1,040.60	P
21220706	ADVANCE AUTO PARTS - WR Jackson St	Battery for #533-NP	09/15/2022	\$120.59	P
21220707	CINTAS CORPORATION	Ranger Uniform Cleanings	09/15/2022	\$214.49	P
21220708	HOME DEPOT CREDIT SERV (Highway)	Building Supplies-SP	09/15/2022	\$148.94	P
21220709	JEWELL ASSOCIATES ENGINEERS INC	Hay Creek Study-Co34	09/15/2022	\$350.00	P
21220710	MUNDT EMIL	Straw Bales for PB	09/15/2022	\$486.50	P
21220711	OAKDALE ELECTRIC CO	Electric for Beach House	09/15/2022	\$35.22	P
21220712	PROVISION PARTNERS	Gas Equipment - DP	09/15/2022	\$47.51	P
21220713	RAPID CONTROL SYSTEMS LLC	DP Dam System Paid 50%	09/15/2022	\$7,802.50	P
21220714	SOLARUS	Security Cameras SP-E	09/15/2022	\$1,135.30	P
21220715	TURF TAMERS LLC	Lawn Mowing SP & Nepco-Aug "22	09/15/2022	\$3,080.00	P
21220716	WASTE MANAGEMENT	Garbage Service Fees	09/15/2022	\$939.92	P
21220717	ADVANCE AUTO PARTS (Atlanta GA)	Plow Truck Battery-SP	09/15/2022	\$144.04	P
21220718	ALLIANT ENERGY/ WP&L	ElecSrv Nepco Shelter, Etc.	09/15/2022	\$148.54	P
21220719	ALLIANT ENERGY/ WP&L	ElecSrv NP Rvr Samp	09/15/2022	\$175.65	P
21220720	ALLIANT ENERGY/ WP&L	ElecSrv NP Lower Showers	09/15/2022	\$123.80	P
21220721	ALLIANT ENERGY/ WP&L	ElecSRV-NP Ranger Cabin & Host	09/15/2022	\$176.87	P
21220722	ALLIANT ENERGY/ WP&L	ElecSRV NP Shop Dump	09/15/2022	\$104.38	P
21220723	ALLIANT ENERGY/ WP&L	ElecSRV New Showers	09/15/2022	\$649.40	P
21220724	ALLIANT ENERGY/ WP&L	ElecSRV NP BR-Camp	09/15/2022	\$213.45	P
21220725	ALLIANT ENERGY/ WP&L	ElecSRV NP Showers	09/15/2022	\$72.19	P
21220726	ALLIANT ENERGY/ WP&L	ElecSRV NP Hawthorne Hill Area	09/15/2022	\$301.83	P
21220727	ALLIANT ENERGY/ WP&L	ElecSRV for PB	09/15/2022	\$74.05	P
21220728	OAKDALE ELECTRIC CO	ElecSRV -ATV Shelter	09/15/2022	\$115.73	P
21220729	OAKDALE ELECTRIC CO	ElecSRV DP Dam Area	09/15/2022	\$62.60	P
21220730	OAKDALE ELECTRIC CO	ElecSRV DP Loop3, Vault Toilet	09/15/2022	\$51.21	P
21220731	OAKDALE ELECTRIC CO	ElecSRV DP Shelter, Boat Landing Area	09/15/2022	\$49.95	P
21220732	OAKDALE ELECTRIC CO	ElecSRV DP Loop2 & Showers	09/15/2022	\$453.17	P
21220733	OAKDALE ELECTRIC CO	ElecSRV DP Smitty	09/15/2022	\$41.22	P
21220734	OAKDALE ELECTRIC CO	ElecSRV DP Group Site Area	09/15/2022	\$161.33	P
21220735	OAKDALE ELECTRIC CO	ElecSRV DP Host Full Hook Up Sites	09/15/2022	\$393.32	P
21220736	OAKDALE ELECTRIC CO	ElecSRV DP Loop 1 & Shower	09/15/2022	\$514.01	P
21220737	OAKDALE ELECTRIC CO	ElecSRV DP Cabin Area	09/15/2022	\$104.56	P
21220738	OAKDALE ELECTRIC CO	ElecSRV DP Loop 3	09/15/2022	\$339.17	P
21220739	OAKDALE ELECTRIC CO	ElecSRV DP Shop	09/15/2022	\$183.87	P
21220740	PROVISION PARTNERS	Equipment Gas - DP	09/15/2022	\$35.76	P
21220741	PROVISION PARTNERS	Gas Forestry #569 & #609	09/15/2022	\$390.00	P
21220742	ARCTIC GLACIER INC	Ice-NP	10/06/2022	\$365.72	P
21220743	ARCTIC GLACIER INC	Ice-SP	10/06/2022	\$264.88	P
21220744	BOHN TRUCKING & EXCAVATING INC	Crushed Rock-SP	10/06/2022	\$351.05	P

PARKS & FORESTRY DEPT. - SEPTEMBER  
(OCT. HIRC)

21220659 - 21220754

21220745	BOHN TRUCKING & EXCAVATING INC	Dam Project-DP	10/06/2022	\$4,310.00	P
21220746	INSIGHT FS	LP & GAS for Parks	10/06/2022	\$2,719.60	P
21220747	MENARDS-MARSHFIELD	Grass Seed & Supplies-NP	10/06/2022	\$278.44	P
21220748	RAPIDS RENTAL & SUPPLY	Weedie Supplies-SP	10/06/2022	\$28.99	P
21220749	ROCK SOLID TRAIL CONTRACTING	PB Multi Use Trail Construction	10/06/2022	\$87,768.00	P
21220750	SHAWN DUPEE CONSTRUCTION LLC	Ballast & Sand – Forestry Roads	10/06/2022	\$1,052.00	P
21220751	STAPLES ADVANTAGE	Office Supplies	10/06/2022	\$70.91	P
21220752	US BANK	Cedar Planks-PB, Hotel, Permit, Supplies	10/06/2022	\$4,343.06	P
21220753	WEICHELT TRUCKING & EXCAVATING	Roadbase & Rock-PB Roads	10/06/2022	\$3,076.84	P
21220754	WEICHELT TRUCKING & EXCAVATING	Large Rock for PB Road	10/06/2022	\$2,324.71	P
<b>Grand Total:</b>				<b>\$255,266.67</b>	

Signatures

Committee Chair:

Committee Member:

Committee Member:

Committee Member:

Committee Member:

Committee Member:

Committee Member:

Committee Member:

Committee Member:

**NOTE: The \$4310 check for BOHN Trucking will be voided. It will be issued to ECON Electric for the Dexter Dam Project on next month's check run.**